

UK Office

Everest Biotech Ltd

Cherwell Innovation Centre
77 Heyford Park
Upper Heyford
Oxfordshire
OX25 5HD
UK

Enquiries:

info@everestbiotech.com

Sales:

sales@everestbiotech.com

Tech support:

support@everestbiotech.com

Tel: +44 (0)1869 238326

www.everestbiotech.com

**Research Use Only. Not for
diagnostic or therapeutic use.**

EB06654 - Goat Anti-AKAP9 / AKAP450 / CG-NAP Antibody

Size: 100µg specific antibody in 200µl



Target Protein

Principal Names: AKAP9, CG-NAP, PRKA9, YOTIAO, AKAP350, HYPERION, KIAA0803, A kinase (PRKA) anchor protein (yotiao) 9, AKAP120-like protein, kinase N-associated protein, A-kinase anchoring protein 450, A-kinase anchor protein, 350kDa, protein kinase A anchoring protein 9, centrosome- and golgi-localized protein, AKAP450, MU-RMS-40.16A, A-kinase anchor protein 9, AKAP9-BRAF fusion protein

Official Symbol: AKAP9

Accession Number(s): NP_005742.4; NP_671714.1

Human GeneID(s): [10142](#)

Important Comments: This antibody is expected to recognise isoforms 2 and 3 (NP_005742.4; NP_671714.1 respectively). The isoforms Yotiao, AKAP350B and AKAP350C are not recognized.

Immunogen

Peptide with sequence C-SGSTTQFHAGMR, from the C Terminus of the protein sequence according to NP_005742.4; NP_671714.1.

Please note the [peptide](#) is available for sale.

Purification and Storage

Purified from goat serum by ammonium sulphate precipitation followed by antigen affinity chromatography using the immunizing peptide.

Supplied at 0.5 mg/ml in Tris saline, 0.02% sodium azide, pH7.3 with 0.5% bovine serum albumin.

Aliquot and store at -20°C. Minimize freezing and thawing.

Applications Tested

Peptide ELISA: antibody detection limit dilution 1:64000.

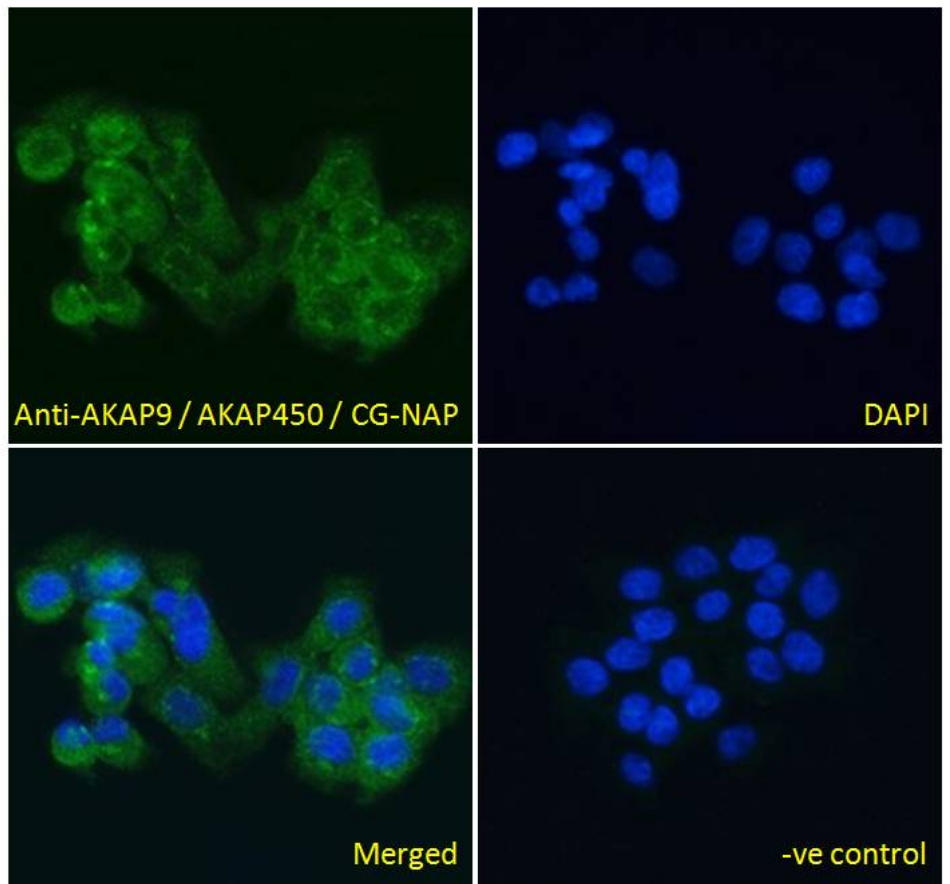
Western blot: This product has been successfully used by a customer, showing a band at approx 450kDa in lysates of cell line HepG2 (calculated MW of 453kDa according to NP_005742.4). Recommended concentration: 1-3µg/ml.

Immunofluorescence: Strong expression of the protein seen in the cytoplasm of A431 and U2OS cells. Recommended concentration: 10µg/ml.

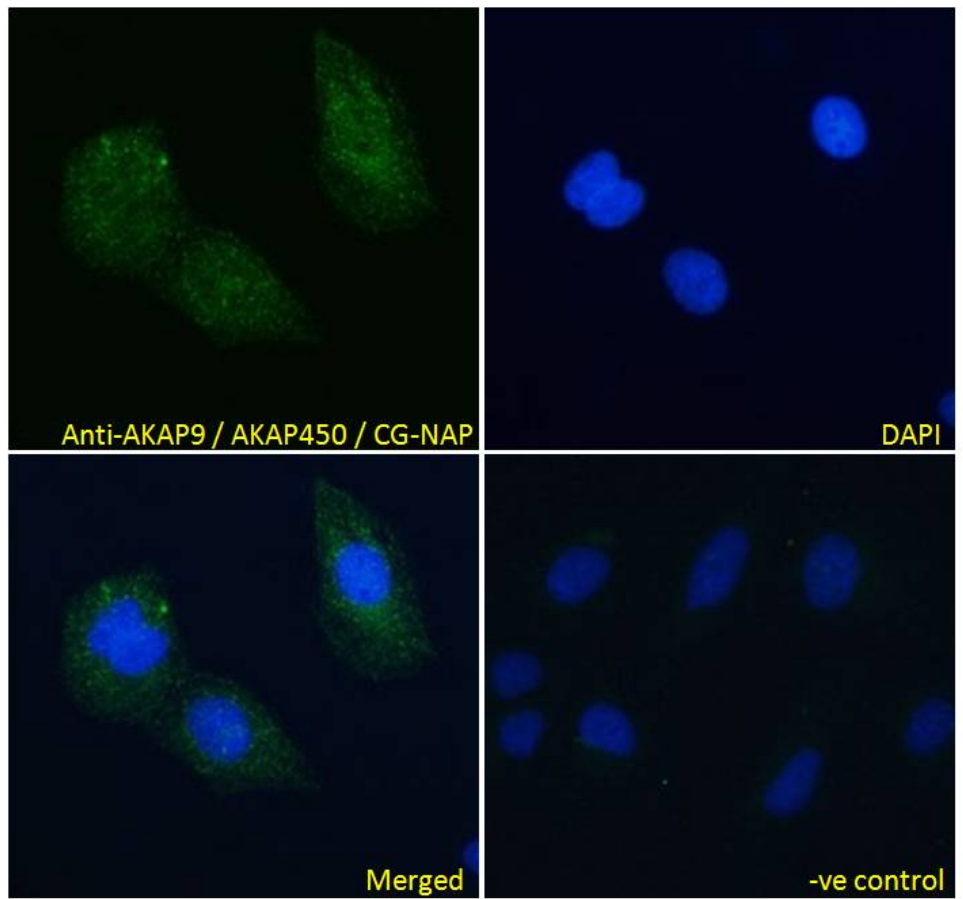
Species Reactivity

Tested: Human

Expected from sequence similarity: Human, Mouse



EB06654 Immunofluorescence analysis of paraformaldehyde fixed A431 cells, permeabilized with 0.15% Triton. Primary incubation 1hr (10ug/ml) followed by Alexa Fluor 488 secondary antibody (4ug/ml), showing cytoplasmic and Golgi apparatus staining. The nuclear stain is DAPI (blue). Negative control: Unimmunized goat IgG (10ug/ml) followed by Alexa Fluor 488 secondary antibody (4ug/ml).



EB06654 Immunofluorescence analysis of paraformaldehyde fixed U2OS cells, permeabilized with 0.15% Triton. Primary incubation 1hr (10ug/ml) followed by Alexa Fluor 488 secondary antibody (4ug/ml), showing cytoplasmic staining. The nuclear stain is DAPI (blue). Negative control: Unimmunized goat IgG (10ug/ml) followed by Alexa Fluor 488 secondary antibody (4ug/ml).