

UK Office

Everest Biotech Ltd

Cherwell Innovation Centre
77 Heyford Park
Upper Heyford
Oxfordshire
OX25 5HD
UK

Enquiries:

info@everestbiotech.com

Sales:

sales@everestbiotech.com

Tech support:

support@everestbiotech.com

Tel: +44 (0)1869 238326

www.everestbiotech.com

**Research Use Only. Not for
diagnostic or therapeutic use.**

EB06637 - Goat Anti-AKR1C3 Antibody

Size: 100µg specific antibody in 200µl



Target Protein

Principal Names: AKR1C3, DD3, HAKRB, HAKRe, HA1753, HSD17B5, hluPGFS, KIAA0119, aldo-keto reductase family 1, member C3 (3-alpha hydroxysteroid dehydrogenase, type II), prostaglandin F synthase, dihydrodiol dehydrogenase 3, chlordecone reductase homolog, hydroxysteroid (17-beta) dehydrogenase 5, type IIb 3-alpha hydroxysteroid dehydrogenase, trans-1,2-dihydrobenzene-1,2-diol dehydrogenase, DDX, aldo-keto reductase family 1, member C3, chlordecone reductase, dihydrodiol dehydrogenase X, type II 3a-hydroxysteroid dehydrogenase, type IIb 3-alpha hydroxysteroid dehydrogenase

Official Symbol: AKR1C3

Accession Number(s): NP_003730.4

Human GeneID(s): [8644](#)

Immunogen

Peptide with sequence CFASHPNYPYSDEY, from the C Terminus of the protein sequence according to NP_003730.4.

Please note the [peptide](#) is available for sale.

Purification and Storage

Purified from goat serum by ammonium sulphate precipitation followed by antigen affinity chromatography using the immunizing peptide.

Supplied at 0.5 mg/ml in Tris saline, 0.02% sodium azide, pH7.3 with 0.5% bovine serum albumin.

Aliquot and store at -20°C. Minimize freezing and thawing.

Applications Tested

Peptide ELISA: antibody detection limit dilution 1:32000.

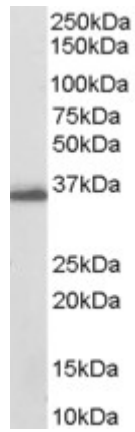
Western blot: Approx 35kDa band observed in Human Liver and Human Breast lysates (calculated MW of 36.9kDa according to NP_003730). Recommended concentration: 0.01-0.1µg/ml. Primary incubation was 1 hour.

IHC: Paraffin embedded Human Small Intestine. Recommended concentration: 5µg/ml.

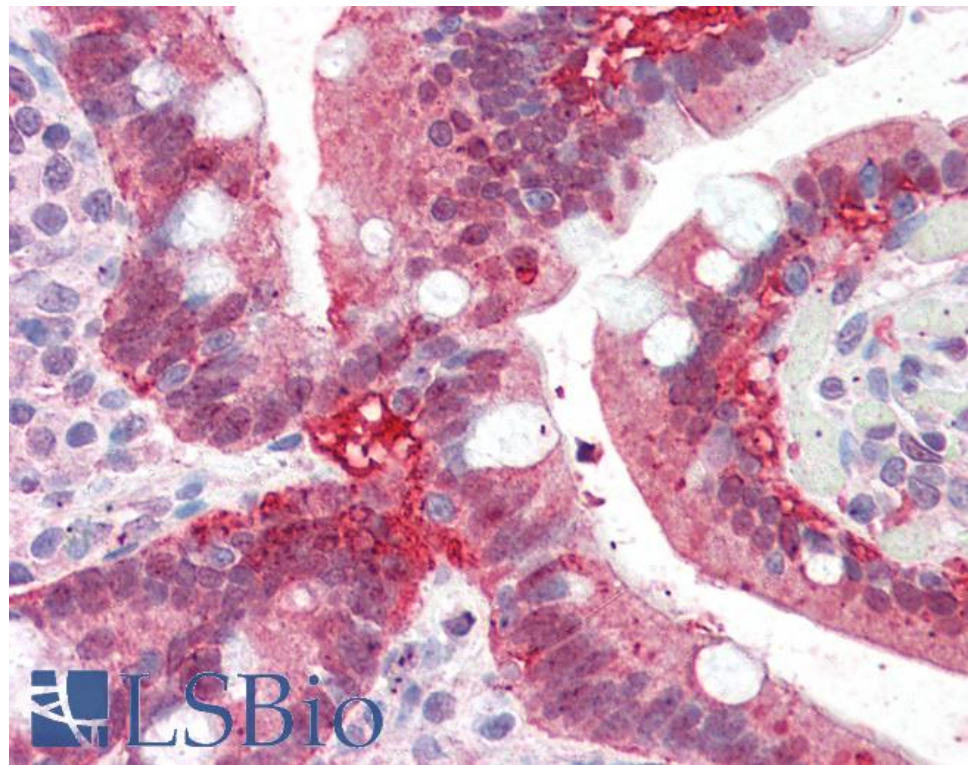
Species Reactivity

Tested: Human

Expected from sequence similarity: Human



EB06637 (0.03 μ g/ml) staining of Human Breast lysate (35 μ g protein in RIPA buffer). Detected by chemiluminescence.



EB06637 (5 μ g/ml) staining of paraffin embedded Human Small Intestine. Steamed antigen retrieval with citrate buffer pH 6, AP-staining.