

UK Office

Everest Biotech Ltd

Cherwell Innovation Centre
77 Heyford Park
Upper Heyford
Oxfordshire
OX25 5HD
UK

Enquiries:

info@everestbiotech.com

Sales:

sales@everestbiotech.com

Tech support:

support@everestbiotech.com

Tel: +44 (0)1869 238326

www.everestbiotech.com

**Research Use Only. Not for
diagnostic or therapeutic use.**

EB07240 - Goat Anti-AKR1C4 Antibody

Size: 100µg specific antibody in 200µl



Target Protein

Principal Names: AKR1C4, aldo-keto reductase family 1, member C4, HGNC:387, 3-alpha-HSD, C11, CDR, CHDR, DD4, HAKRA, MGC22581, 3-alpha hydroxysteroid dehydrogenase, type I, 3 alpha-hydroxysteroid dehydrogenase/dihydrodiol dehydrogenase 4, 3-alpha-hydroxysteroid dehydrogenase variant, aldo-keto reductase family 1, member C4, chlordecone reductase, dihydrodiol dehydrogenase 4, dihydrodiol dehydrogenase isozyme DD4, type I 3-alpha-hydroxysteroid dehydrogenase

Official Symbol: AKR1C4

Accession Number(s): NP_001809.2

Human GeneID(s): [1109](#)

Important Comments: This antibody may cross-react with AKR1C1

Immunogen

Peptide with sequence DPKYQRVELNDGH-C, from the N Terminus of the protein sequence according to NP_001809.2.

Please note the [peptide](#) is available for sale.

Purification and Storage

Purified from goat serum by ammonium sulphate precipitation followed by antigen affinity chromatography using the immunizing peptide.

Supplied at 0.5 mg/ml in Tris saline, 0.02% sodium azide, pH7.3 with 0.5% bovine serum albumin.

Aliquot and store at -20°C. Minimize freezing and thawing.

Applications Tested

Peptide ELISA: antibody detection limit dilution 1:4000.

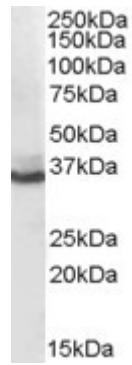
Western blot: Approx. 35kDa band observed in Human Liver lysates (calculated MW of 37.1kDa according to NP_001809.2). Recommended concentration: 0.1-0.3µg/ml.

IHC: In paraffin embedded Human Liver shows staining of distinct structures in the cytoplasm of hepatocytes. Recommended concentration, 2-4µg/ml.

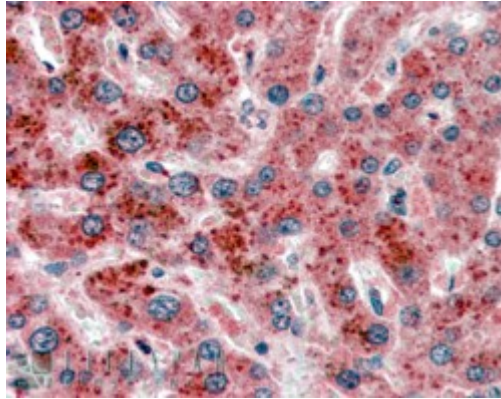
Species Reactivity

Tested: Human

Expected from sequence similarity: Human



EB07240 (0.1µg/ml) staining of human liver lysate (35µg protein in RIPA buffer). Primary incubation was 1 hour.
Detected by chemiluminescence.



EB07240 (2.5µg/ml) staining of paraffin embedded Human Liver. Steamed antigen retrieval with citrate buffer pH 6, AP-staining.