



UK Office

Everest Biotech Ltd

Cherwell Innovation Centre
77 Heyford Park
Upper Heyford
Oxfordshire
OX25 5HD
UK

Enquiries:

info@everestbiotech.com

Sales:

sales@everestbiotech.com

Tech support:

support@everestbiotech.com

Tel: +44 (0)1869 238326

Fax: +44 (0)1869 238327

US Office

Everest Biotech c/o Abcore

405 Maple Street, Suite A106
Ramona,
CA 92065
USA

Inquiries:

info@everestbiotech.com

Sales:

usasales@everestbiotech.com

Tech support:

support@everestbiotech.com

Tel: 888-320-4628 (toll-free)

Fax: 888-841-9041

www.everestbiotech.com

**Research Use Only. Not for
diagnostic or therapeutic use.**

EB06562-T - Goat Anti-AKT3 Antibody - Trial

Size: 20µg specific antibody in 40µl



Target Protein

Principal Names: AKT3, PKBG, PRKBG, STK-2, RAC-gamma, RAC-PK-gamma, DKFZP434N0250, v-akt murine thymoma viral oncogene homolog 3 (protein kinase B, gamma), protein kinase B gamma, serine threonine protein kinase, Akt-3, RAC-gamma serine/threonine protein kinase

Official Symbol: AKT3

Accession Number(s): NP_005456.1; NP_859029.1

Human GeneID(s): [10000](#)

Important Comments: This antibody is expected to recognise an epitope corresponding to aa 119-133 of both isoforms of human AKT3 protein. This antibody does not cross-react with human AKT1/2. Reported variants represent identical protein (NP_859029.1; NP_001193658.1).

Immunogen

Peptide with sequence CSPTSQIDNIGEEEM, from the internal region of the protein sequence according to NP_005456.1; NP_859029.1.

Please note the [peptide](#) is available for sale.

Purification and Storage

Purified from goat serum by ammonium sulphate precipitation followed by antigen affinity chromatography using the immunizing peptide.

Supplied at 0.5 mg/ml in Tris saline, 0.02% sodium azide, pH7.3 with 0.5% bovine serum albumin.

Aliquot and store at -20°C. Minimize freezing and thawing.

Applications Tested

Peptide ELISA: antibody detection limit dilution 1:16000.

Western blot: A 50-55kDa band observed in lysates of cell lines HepG2 and Jurkat and in Mouse and Rat Brain lysates (calculated MW of 54.0kDa according to NP_859029.1).

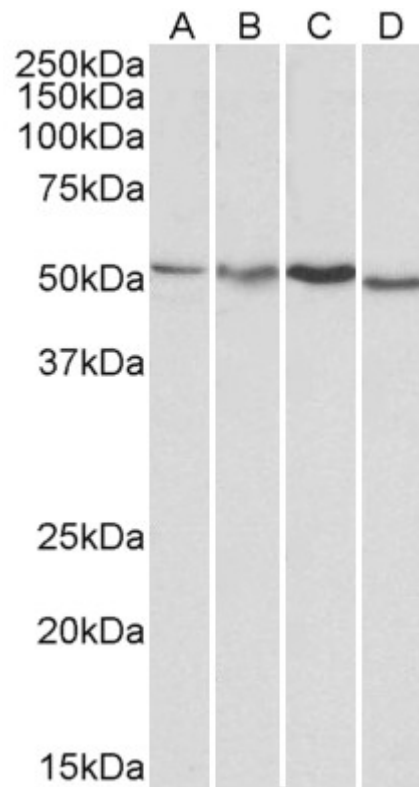
Recommended concentration: 1-3µg/ml.

IHC: Paraffin embedded Human Prostate and Heart. Recommended concentration: 5µg/ml.

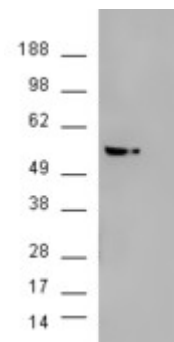
Species Reactivity

Tested: Human, Mouse, Rat

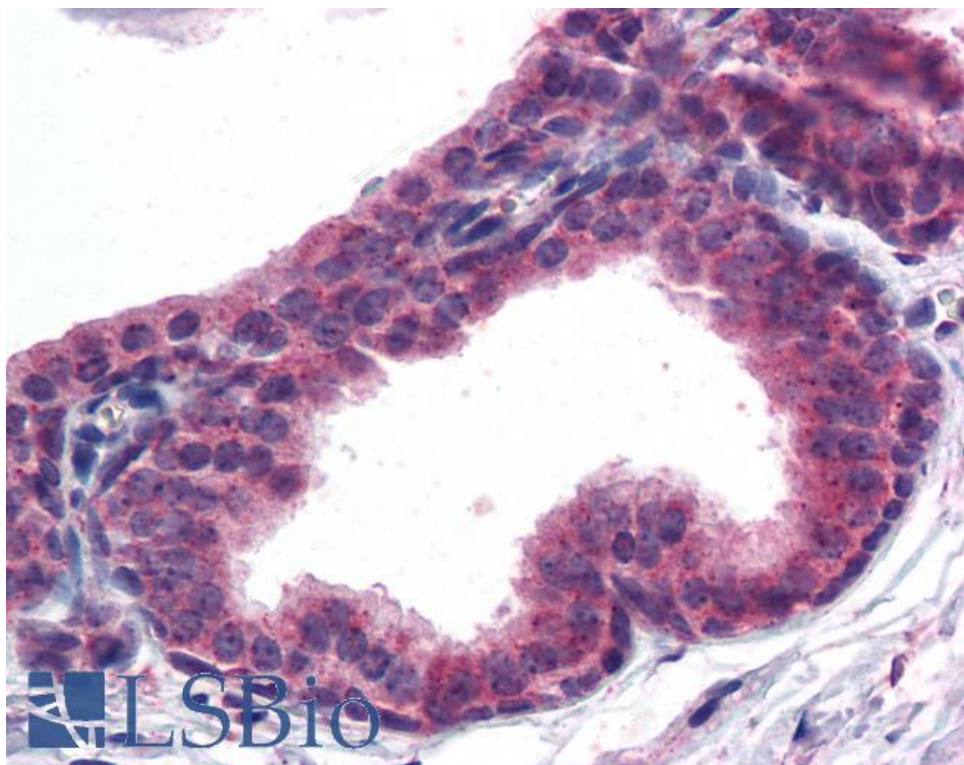
Expected from sequence similarity: Human, Mouse, Rat, Dog, Cow



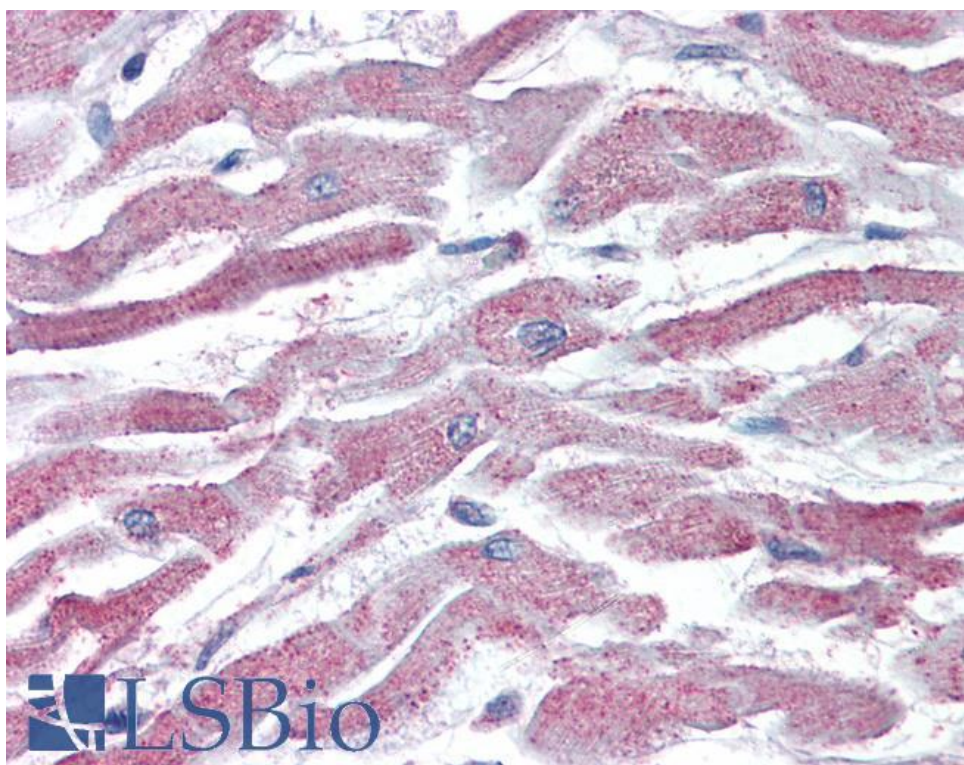
EB06562 (1µg/ml) staining of HepG2 (A), Jurkat (B), Mouse Brain (C) and Rat Brain (D) lysates (35µg protein in RIPA buffer). Primary incubation was 1 hour. Detected by chemiluminescence.



HEK293 overexpressing AKT3 (RC224750) and probed with EB06562 (mock transfection in second lane), tested by Origene.



EB06562 (5µg/ml) staining of paraffin embedded Human Prostate. Steamed antigen retrieval with citrate buffer pH 6, AP-staining.



EB06562 (5µg/ml) staining of paraffin embedded Human Heart. Steamed antigen retrieval with citrate buffer pH 6, AP-staining.