



UK Office

Everest Biotech Ltd

Cherwell Innovation Centre
77 Heyford Park
Upper Heyford
Oxfordshire
OX25 5HD
UK

Enquiries:

info@everestbiotech.com

Sales:

sales@everestbiotech.com

Tech support:

support@everestbiotech.com

Tel: +44 (0)1869 238326

Fax: +44 (0)1869 238327

US Office

Everest Biotech c/o Abcore

405 Maple Street, Suite A106
Ramona,
CA 92065
USA

Inquiries:

info@everestbiotech.com

Sales:

usasales@everestbiotech.com

Tech support:

support@everestbiotech.com

Tel: 888-320-4628 (toll-free)

Fax: 888-841-9041

www.everestbiotech.com

**Research Use Only. Not for
diagnostic or therapeutic use.**

EB06562 - Goat Anti-AKT3 Antibody

Size: 100µg specific antibody in 200µl



Target Protein

Principal Names: AKT3, PKBG, PRKBG, STK-2, RAC-gamma, RAC-PK-gamma, DKFZP434N0250, v-akt murine thymoma viral oncogene homolog 3 (protein kinase B, gamma), protein kinase B gamma, serine threonine protein kinase, Akt-3, RAC-gamma serine/threonine protein kinase

Official Symbol: AKT3

Accession Number(s): NP_005456.1; NP_859029.1

Human GeneID(s): [10000](#)

Important Comments: This antibody is expected to recognise an epitope corresponding to aa 119-133 of both isoforms of human AKT3 protein. This antibody does not cross-react with human AKT1/2. Reported variants represent identical protein (NP_859029.1; NP_001193658.1).

Immunogen

Peptide with sequence CSPTSQIDNIGEEEM, from the internal region of the protein sequence according to NP_005456.1; NP_859029.1.

Please note the [peptide](#) is available for sale.

Purification and Storage

Purified from goat serum by ammonium sulphate precipitation followed by antigen affinity chromatography using the immunizing peptide.

Supplied at 0.5 mg/ml in Tris saline, 0.02% sodium azide, pH7.3 with 0.5% bovine serum albumin.

Aliquot and store at -20°C. Minimize freezing and thawing.

Applications Tested

Peptide ELISA: antibody detection limit dilution 1:16000.

Western blot: Approx. 50-55kDa band observed in lysates of cell lines HepG2, and HeLa, approx. 55kDa in Human Thyroid lysates, and approx. 50kDa in Mouse and Rat Brain lysates (calculated MW of 54.0kDa according to Human NP_859029.1 and 55.7kDa according to Mouse NP_035915.3 and Rat NP_113763.2). Recommended concentration: 1-3µg/ml. Primary incubation 1 hour at room temperature.

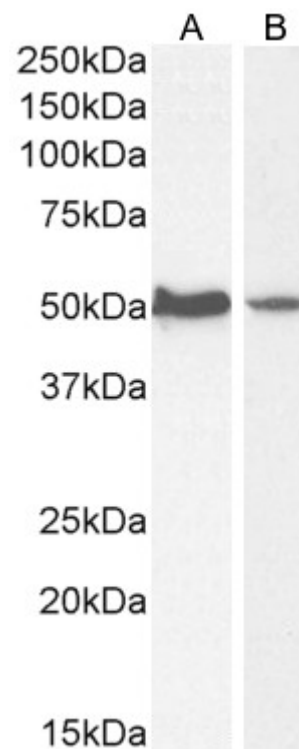
Positive Control: A batch specific positive control lysate is available for this product. Please contact Sales@everestbiotech.com for availability.

IHC: Paraffin embedded Human Prostate and Heart. Recommended concentration: 5µg/ml.

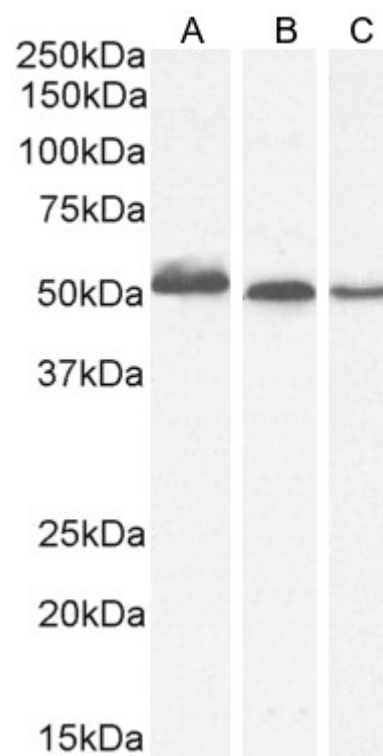
Species Reactivity

Tested: Human, Mouse, Rat

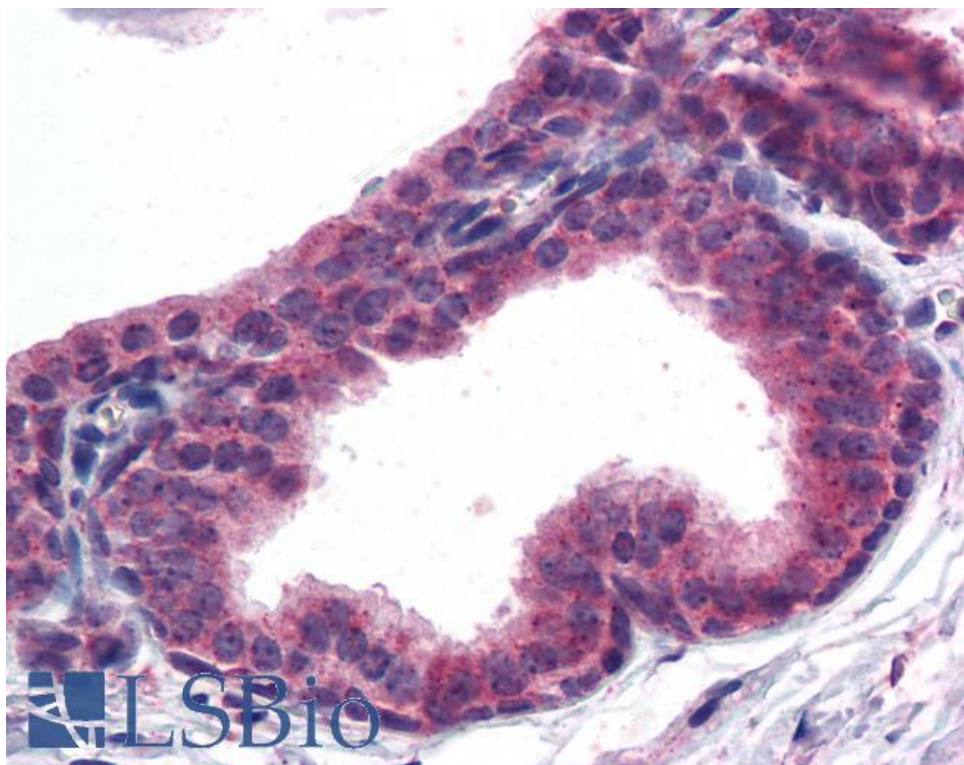
Expected from sequence similarity: Human, Mouse, Rat, Dog, Cow



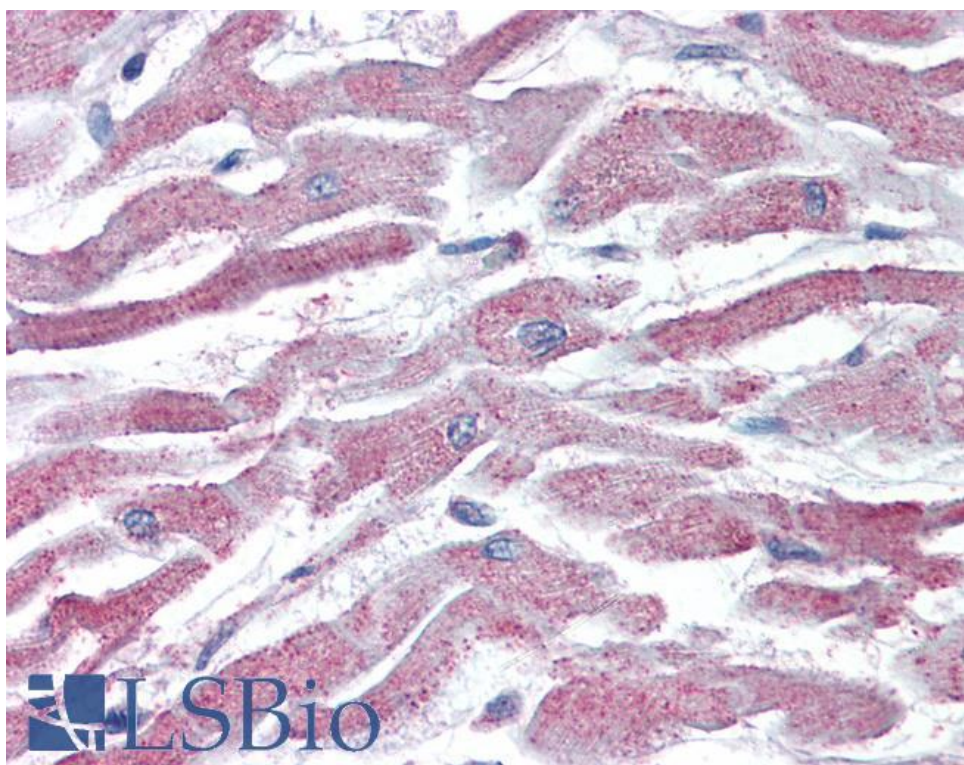
EB06562 (1 μ g/ml) staining of HepG2 (A) and HeLa (B) cell lysate (35 μ g protein in RIPA buffer). Detected by chemiluminescence.



EB06562 (1 μ g/ml) staining of Human Thyroid (A), (0.5 μ g/ml) Mouse Brain (B) and (1 μ g/ml) Rat Brain (C) lysate (35 μ g protein in RIPA buffer). Detected by chemiluminescence.



EB06562 (5µg/ml) staining of paraffin embedded Human Prostate. Steamed antigen retrieval with citrate buffer pH 6, AP-staining.



EB06562 (5µg/ml) staining of paraffin embedded Human Heart. Steamed antigen retrieval with citrate buffer pH 6, AP-staining.