



UK Office

Everest Biotech Ltd

Cherwell Innovation Centre
77 Heyford Park
Upper Heyford
Oxfordshire
OX25 5HD
UK

Enquiries:

info@everestbiotech.com

Sales:

sales@everestbiotech.com

Tech support:

support@everestbiotech.com

Tel: +44 (0)1869 238326

www.everestbiotech.com

**Research Use Only. Not for
diagnostic or therapeutic use.**

EB10433 - Goat Anti-ALDH18A1 Antibody

Size: 100µg specific antibody in 200µl



Target Protein

Principal Names: aldehyde dehydrogenase 18 family, member A1, aldehyde dehydrogenase 18A1, delta1-pyrroline-5-carboxylate synthetase, GSAS, MGC117316, P5CS, PYCS, pyrroline-5-carboxylate synthetase (glutamate gamma-semialdehyde synthetase), ALDH18A1

Official Symbol: ALDH18A1

Accession Number(s): NP_002851.2; NP_001017423.1

Human GeneID(s): [5832](#)

Non-Human GeneID(s): 56454 (mouse), 361755 (rat)

Important Comments: This antibody is expected to recognize both reported isoforms (NP_002851.2; NP_001017423.1).

Immunogen

Peptide with sequence C-SEHGSLKYLH, from the C Terminus of the protein sequence according to NP_002851.2; NP_001017423.1.

Please note the [peptide](#) is available for sale.

Purification and Storage

Purified from goat serum by ammonium sulphate precipitation followed by antigen affinity chromatography using the immunizing peptide.

Supplied at 0.5 mg/ml in Tris saline, 0.02% sodium azide, pH7.3 with 0.5% bovine serum albumin.

Aliquot and store at -20°C. Minimize freezing and thawing.

Applications Tested

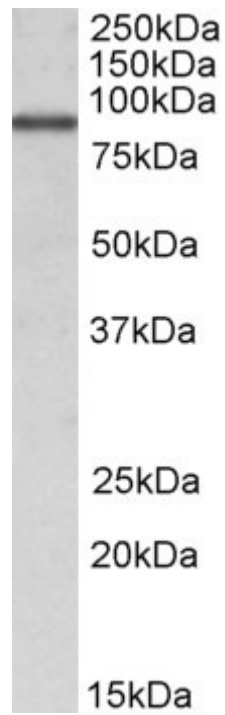
Peptide ELISA: antibody detection limit dilution 1:8000.

Western blot: Approx 85kDa band observed in lysates of cell lines NIH3T3 and MCF7 (calculated MW of 87.3kDa according to NP_002851.2). Recommended concentration: 1-3µg/ml.

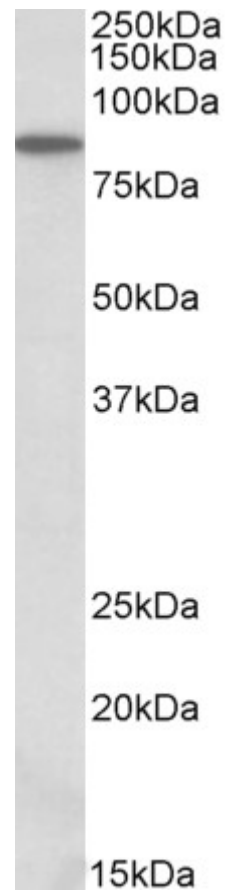
Species Reactivity

Tested: Human, Mouse

Expected from sequence similarity: Human, Mouse, Rat, Dog, Cow, Pig



EB10433 (1 μ g/ml) staining of MCF7 lysate (35 μ g protein in RIPA buffer). Primary incubation was 1 hour.
Detected by chemiluminescence.



EB10433 (0.3 μ g/ml) staining of NIH3T3 lysate (35 μ g protein in RIPA buffer). Primary incubation was 1 hour.
Detected by chemiluminescence.