

## UK Office

### Everest Biotech Ltd

Cherwell Innovation Centre  
77 Heyford Park  
Upper Heyford  
Oxfordshire  
OX25 5HD  
UK

Enquiries:

[info@everestbiotech.com](mailto:info@everestbiotech.com)

Sales:

[sales@everestbiotech.com](mailto:sales@everestbiotech.com)

Tech support:

[support@everestbiotech.com](mailto:support@everestbiotech.com)

Tel: +44 (0)1869 238326

Fax: +44 (0)1869 238327

## US Office

### Everest Biotech c/o Abcore

405 Maple Street, Suite A106  
Ramona,  
CA 92065  
USA

Inquiries:

[info@everestbiotech.com](mailto:info@everestbiotech.com)

Sales:

[usasales@everestbiotech.com](mailto:usasales@everestbiotech.com)

Tech support:

[support@everestbiotech.com](mailto:support@everestbiotech.com)

Tel: 888-320-4628 (toll-free)

Fax: 888-841-9041

[www.everestbiotech.com](http://www.everestbiotech.com)

**Research Use Only. Not for  
diagnostic or therapeutic use.**

## EB05049-T - Goat Anti-ALDH1A1 (C Terminus) Antibody - Trial

Size: 20µg specific antibody in 40µl



### Target Protein

**Principal Names:** ALDH1A1, aldehyde dehydrogenase 1 family, member A1, ALDC, ALDH-E1, ALDH1, ALDH11, MGC2318,, PUMB1, RALDH1, ALDH class 1, acetaldehyde dehydrogenase 1, aldehyde dehydrogenase 1, soluble, aldehyde dehydrogenase 1A1, aldehyde dehydrogenase, liver cytosolic, retinal dehydrogenase 1, retinaldehyde dehydrogenase 1

**Official Symbol:** ALDH1A1

**Accession Number(s):** NP\_000680.2

**Human GeneID(s):** [216](#)

**Non-Human GeneID(s):** 11668 (mouse), 24188 (rat)

**Important Comments:** This antibody may cross-react with ALDH1A2 (GeneID 8854) with one residue difference from this design and with ALDH2 (GeneID 217) with two residues difference from this design.

### Immunogen

Peptide with sequence C-EVKT VTKISQKNS, from the C Terminus of the protein sequence according to NP\_000680.2.

Please note the [peptide](#) is available for sale.

### Purification and Storage

Purified from goat serum by ammonium sulphate precipitation followed by antigen affinity chromatography using the immunizing peptide.

Supplied at 0.5 mg/ml in Tris saline, 0.02% sodium azide, pH7.3 with 0.5% bovine serum albumin.

Aliquot and store at -20°C. Minimize freezing and thawing.

### Applications Tested

**Peptide ELISA:** antibody detection limit dilution 1:1000.

**Western blot:** Approx 55kDa band observed in Human, Mouse and Rat Liver lysates (calculated MW of 54.9kDa according to NP\_000680.2). Recommended concentration: 0.1-0.3µg/ml. Primary incubation was 1 hour.

**Immunofluorescence:** Strong expression of the protein seen in the cytoplasm of HepG2 cells. Recommended concentration: 10µg/ml. This antibody has been successfully used in IF on Human, PMID: 32157826.

### Species Reactivity

**Tested:** Human, Mouse, Rat

**Expected from sequence similarity:** Human, Mouse, Rat

### Specific References

**This antibody has been successfully used in IF on Human:**

Jessy Etienne, Pierre Joanne, Cyril Catelain, Stéphanie Riveron, Alexandra Clarissa Bayer, Jérémy Lafable, Isabel Punzon, Stéphane Blot, Onnik Agbulut, and Jean■Thomas Vilquin

Aldehyde dehydrogenases contribute to skeletal muscle homeostasis in healthy, aging, and Duchenne muscular dystrophy patients.

J Cachexia Sarcopenia Muscle. 2020 Aug; 11(4): 1047-1069.

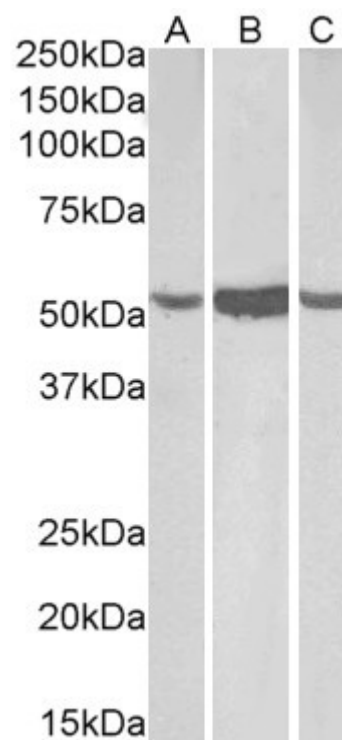
PMID: 32157826

**This antibody (previous batch) has been successfully used in WB and ICC on Human:**

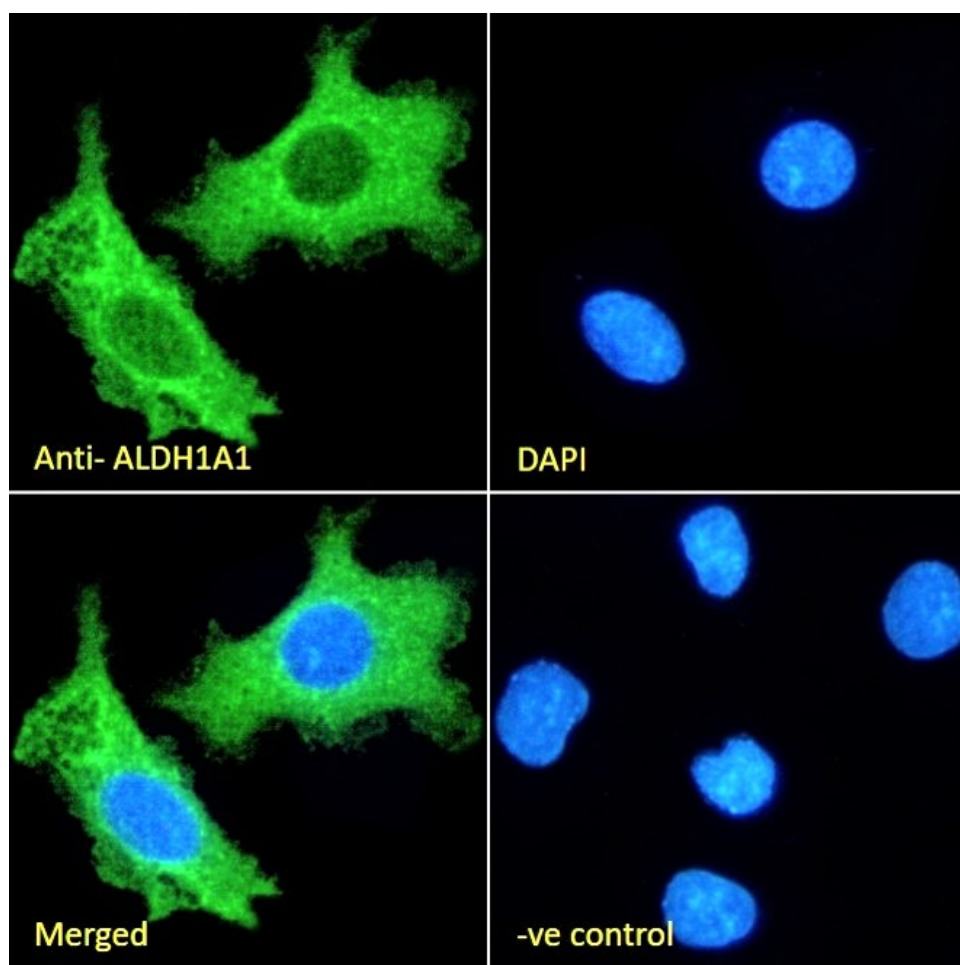
Amann PM, Hofmann C, Freudenberger M, Holland-Cunz S, Eichmüller SB, Bazhin AV. Expression and activity of alcohol and aldehyde dehydrogenases in melanoma cells and in melanocytes.

J Cell Biochem. 2012 Mar;113(3):792-9.

PMID: 22020955



EB05049 (0.1 $\mu$ g/ml) staining of Human (A), Mouse (B) and Rat (C) Liver lysate (35 $\mu$ g protein in RIPA buffer).  
Detected by chemiluminescence.



EB05049 Immunofluorescence analysis of paraformaldehyde fixed HepG2 cells, permeabilized with 0.15% Triton. Primary incubation 1hr (10 $\mu$ g/ml) followed by Alexa Fluor 488 secondary antibody (2 $\mu$ g/ml), showing

cytoplasmic staining. The nuclear stain is DAPI (blue). Negative control: Unimmunized goat IgG (10ug/ml) followed by Alexa Fluor 488 secondary antibody (2ug/ml).