



## International Office

### Everest Biotech Ltd

Vector Laboratories, Inc.  
6737 Mowry Ave  
Newark, CA 94560  
United States

Customer Service:

[customerservice@vectorlabs.com](mailto:customerservice@vectorlabs.com)

Technical Service:

[technical@vectorlabs.com](mailto:technical@vectorlabs.com)

Tel: +1 (800) 227-6666

[www.everestbiotech.com](http://www.everestbiotech.com)

**Research Use Only. Not for  
diagnostic or therapeutic use.**

## EB07138 - Goat Anti-ALDH1A1 (Internal) Antibody

Size: 100µg specific antibody in 200µl



### Target Protein

**Principal Names:** ALDH1A1, aldehyde dehydrogenase 1 family, member A1, ALDC, ALDH-E1, ALDH1, ALDH11, MGC2318, PUMB1, RALDH1, ALDH class 1, acetaldehyde dehydrogenase 1, aldehyde dehydrogenase 1, soluble, aldehyde dehydrogenase 1A1, aldehyde dehydrogenase, liver cytosolic, retinal dehydrogenase 1

**Official Symbol:** ALDH1A1

**Accession Number(s):** NP\_000680.2

**Human GeneID(s):** [216](#)

### Immunogen

Peptide with sequence C-RELGEYGFHEYTE, from the internal region of the protein sequence according to NP\_000680.2.

Please note the [peptide](#) is available for sale.

### Purification and Storage

Purified from goat serum by ammonium sulphate precipitation followed by antigen affinity chromatography using the immunizing peptide.

Supplied at 0.5 mg/ml in Tris saline, 0.02% sodium azide, pH7.3 with 0.5% bovine serum albumin.

Aliquot and store at -20°C. Minimize freezing and thawing.

### Applications Tested

**Peptide ELISA:** antibody detection limit dilution 1:32000.

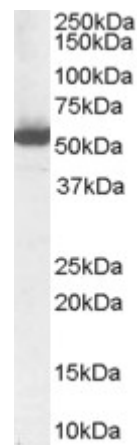
**Western blot:** Approx 55kDa band observed in Human Liver lysates (calculated MW of 54.9kDa according to NP\_000680.2). Recommended concentration: 1-3µg/ml.

**IHC:** Paraffin embedded Human Testis. Recommended concentration: 5µg/ml.

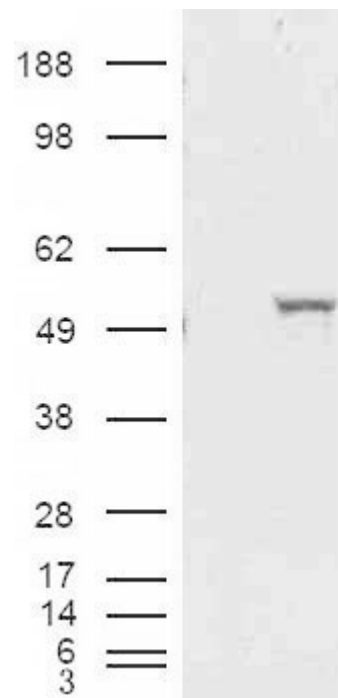
### Species Reactivity

**Tested:** Human

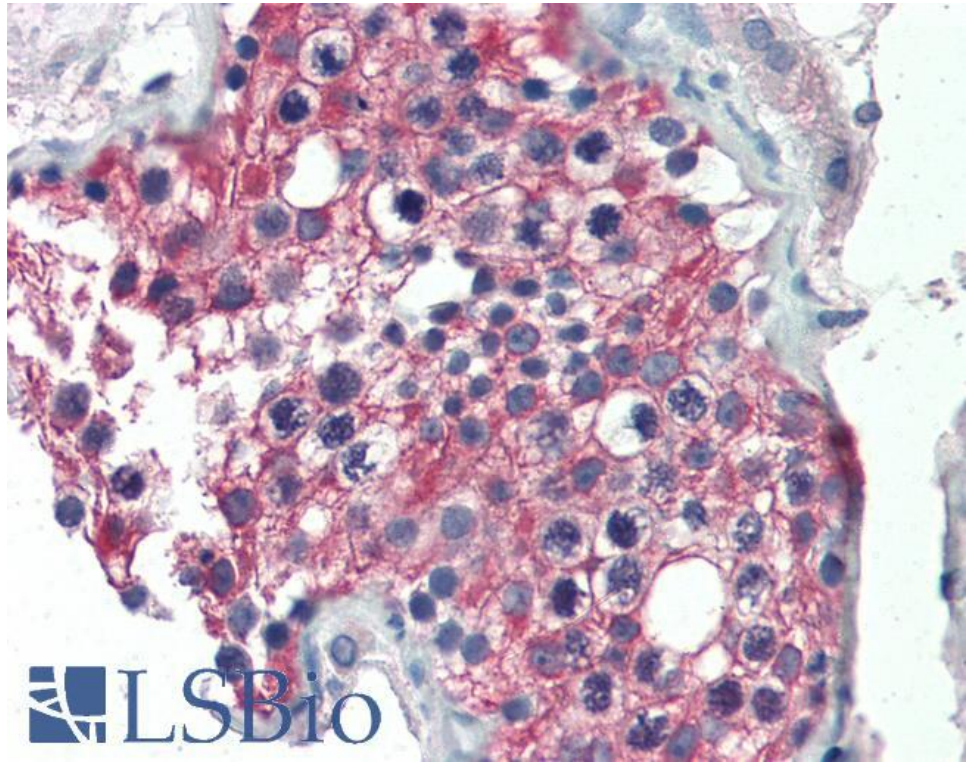
**Expected from sequence similarity:** Human, Mouse, Rat



EB07138 (1µg/ml) staining of Human Liver Lysate (35µg protein in RIPA buffer). Primary incubation was 1 hour.  
Detected by chemiluminescence.



HEK293 overexpressing ALDH1A1 and probed with EB07138 (mock transfection in first lane).



EB07138 (5µg/ml) staining of paraffin embedded Human Testis. Steamed antigen retrieval with citrate buffer pH 6, AP-staining.