

## International Office

### Everest Biotech Ltd

Vector Laboratories, Inc.  
6737 Mowry Ave  
Newark, CA 94560  
United States

Customer Service:

[customerservice@vectorlabs.com](mailto:customerservice@vectorlabs.com)

Technical Service:

[technical@vectorlabs.com](mailto:technical@vectorlabs.com)

Tel: +1 (800) 227-6666

[www.everestbiotech.com](http://www.everestbiotech.com)

**Research Use Only. Not for  
diagnostic or therapeutic use.**

## EB10118 - Goat Anti-ALDH2 Antibody

Size: 100µg specific antibody in 200µl



### Target Protein

**Principal Names:** acetaldehyde dehydrogenase 2, aldehyde dehydrogenase 2 family (mitochondrial), ALDH class 2, ALDH-E2, ALDHI, ALDM, liver mitochondrial ALDH, MGC1806, mitochondrial aldehyde dehydrogenase 2, nucleus-encoded mitochondrial aldehyde dehydrogenase 2, ALDH2

**Official Symbol:** ALDH2

**Accession Number(s):** NP\_000681.2; NP\_001191818.1

**Human GeneID(s):** [217](#)

**Non-Human GeneID(s):** 11669 (mouse), 29539 (rat)

**Important Comments:** This antibody is expected to recognize both reported isoforms (NP\_000681.2; NP\_001191818.1).

### Immunogen

Peptide with sequence C-DETQFKKILGYIN, from the internal region of the protein sequence according to NP\_000681.2; NP\_001191818.1.

Please note the [peptide](#) is available for sale.

### Purification and Storage

Purified from goat serum by ammonium sulphate precipitation followed by antigen affinity chromatography using the immunizing peptide.

Supplied at 0.5 mg/ml in Tris saline, 0.02% sodium azide, pH7.3 with 0.5% bovine serum albumin.

Aliquot and store at -20°C. Minimize freezing and thawing.

### Applications Tested

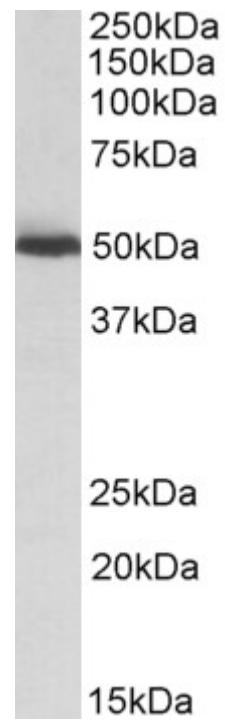
**Peptide ELISA:** antibody detection limit dilution 1:8000.

**Western blot:** Approx 50kDa band observed in Human, Mouse and Rat Liver lysates (calculated MW of 56.4kDa according to Human NP\_000681.2 and 56.5kDa according to Mouse NP\_033786.1). Recommended concentration: 0.03-0.1µg/ml.

### Species Reactivity

**Tested:** Human, Mouse, Rat

**Expected from sequence similarity:** Human, Mouse, Rat, Dog, Cow, Pig



EB10118 (0.03 $\mu$ g/ml) staining of Mouse Liver lysate (35 $\mu$ g protein in RIPA buffer). Primary incubation was 1 hour. Detected by chemiluminescence.