



UK Office

Everest Biotech Ltd

Cherwell Innovation Centre
77 Heyford Park
Upper Heyford
Oxfordshire
OX25 5HD
UK

Enquiries:

info@everestbiotech.com

Sales:

sales@everestbiotech.com

Tech support:

support@everestbiotech.com

Tel: +44 (0)1869 238326

Fax: +44 (0)1869 238327

US Office

Everest Biotech c/o Abcore

405 Maple Street, Suite A106
Ramona,
CA 92065
USA

Inquiries:

info@everestbiotech.com

Sales:

usasales@everestbiotech.com

Tech support:

support@everestbiotech.com

Tel: 888-320-4628 (toll-free)

Fax: 888-841-9041

www.everestbiotech.com

**Research Use Only. Not for
diagnostic or therapeutic use.**

EB10118 - Goat Anti-ALDH2 Antibody

Size: 100µg specific antibody in 200µl



Target Protein

Principal Names: acetaldehyde dehydrogenase 2, aldehyde dehydrogenase 2 family (mitochondrial), ALDH class 2, ALDH-E2, ALDHI, ALDM, liver mitochondrial ALDH, MGC1806, mitochondrial aldehyde dehydrogenase 2, nucleus-encoded mitochondrial aldehyde dehydrogenase 2, ALDH2

Official Symbol: ALDH2

Accession Number(s): NP_000681.2; NP_001191818.1

Human GeneID(s): [217](#)

Non-Human GeneID(s): 11669 (mouse), 29539 (rat)

Important Comments: This antibody is expected to recognize both reported isoforms (NP_000681.2; NP_001191818.1).

Immunogen

Peptide with sequence C-DETQFKKILGYIN, from the internal region of the protein sequence according to NP_000681.2; NP_001191818.1.

Please note the [peptide](#) is available for sale.

Purification and Storage

Purified from goat serum by ammonium sulphate precipitation followed by antigen affinity chromatography using the immunizing peptide.

Supplied at 0.5 mg/ml in Tris saline, 0.02% sodium azide, pH7.3 with 0.5% bovine serum albumin.

Aliquot and store at -20°C. Minimize freezing and thawing.

Applications Tested

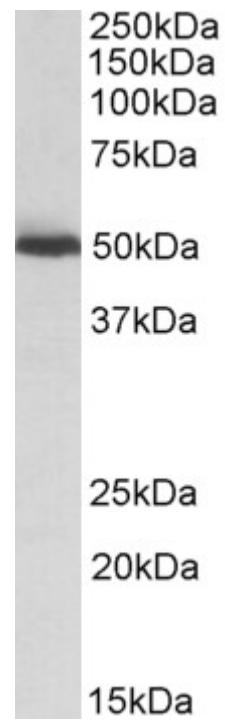
Peptide ELISA: antibody detection limit dilution 1:8000.

Western blot: Approx 50kDa band observed in Human, Mouse and Rat Liver lysates (calculated MW of 56.4kDa according to Human NP_000681.2 and 56.5kDa according to Mouse NP_033786.1). Recommended concentration: 0.03-0.1µg/ml.

Species Reactivity

Tested: Human, Mouse, Rat

Expected from sequence similarity: Human, Mouse, Rat, Dog, Cow, Pig



EB10118 (0.03 μ g/ml) staining of Mouse Liver lysate (35 μ g protein in RIPA buffer). Primary incubation was 1 hour. Detected by chemiluminescence.