



International Office

Everest Biotech Ltd

Vector Laboratories, Inc.
6737 Mowry Ave
Newark, CA 94560
United States

Customer Service:

customerservice@vectorlabs.com

Technical Service:

technical@vectorlabs.com

Tel: +1 (800) 227-6666

www.everestbiotech.com

**Research Use Only. Not for
diagnostic or therapeutic use.**

EB10131 - Goat Anti-ALDH3A2 Antibody

Size: 100µg specific antibody in 200µl



Target Protein

Principal Names: aldehyde dehydrogenase 10, aldehyde dehydrogenase 3 family, member A2, aldehyde dehydrogenase 3A2, ALDH10, DKFZp686E23276, FALDH, fatty aldehyde dehydrogenase, FLJ20851, OTTHUMP00000065801, SLS, ALDH3A2

Official Symbol: ALDH3A2

Accession Number(s): NP_001026976.1; NP_000373.1

Human GeneID(s): [224](#)

Important Comments: This antibody is expected to recognize both reported isoforms (NP_001026976.1; NP_000373.1).

Immunogen

Peptide with sequence C-SLKREGANKLRYPP, from the internal region of the protein sequence according to NP_001026976.1; NP_000373.1.

Please note the [peptide](#) is available for sale.

Purification and Storage

Purified from goat serum by ammonium sulphate precipitation followed by antigen affinity chromatography using the immunizing peptide.

Supplied at 0.5 mg/ml in Tris saline, 0.02% sodium azide, pH7.3 with 0.5% bovine serum albumin.

Aliquot and store at -20°C. Minimize freezing and thawing.

Applications Tested

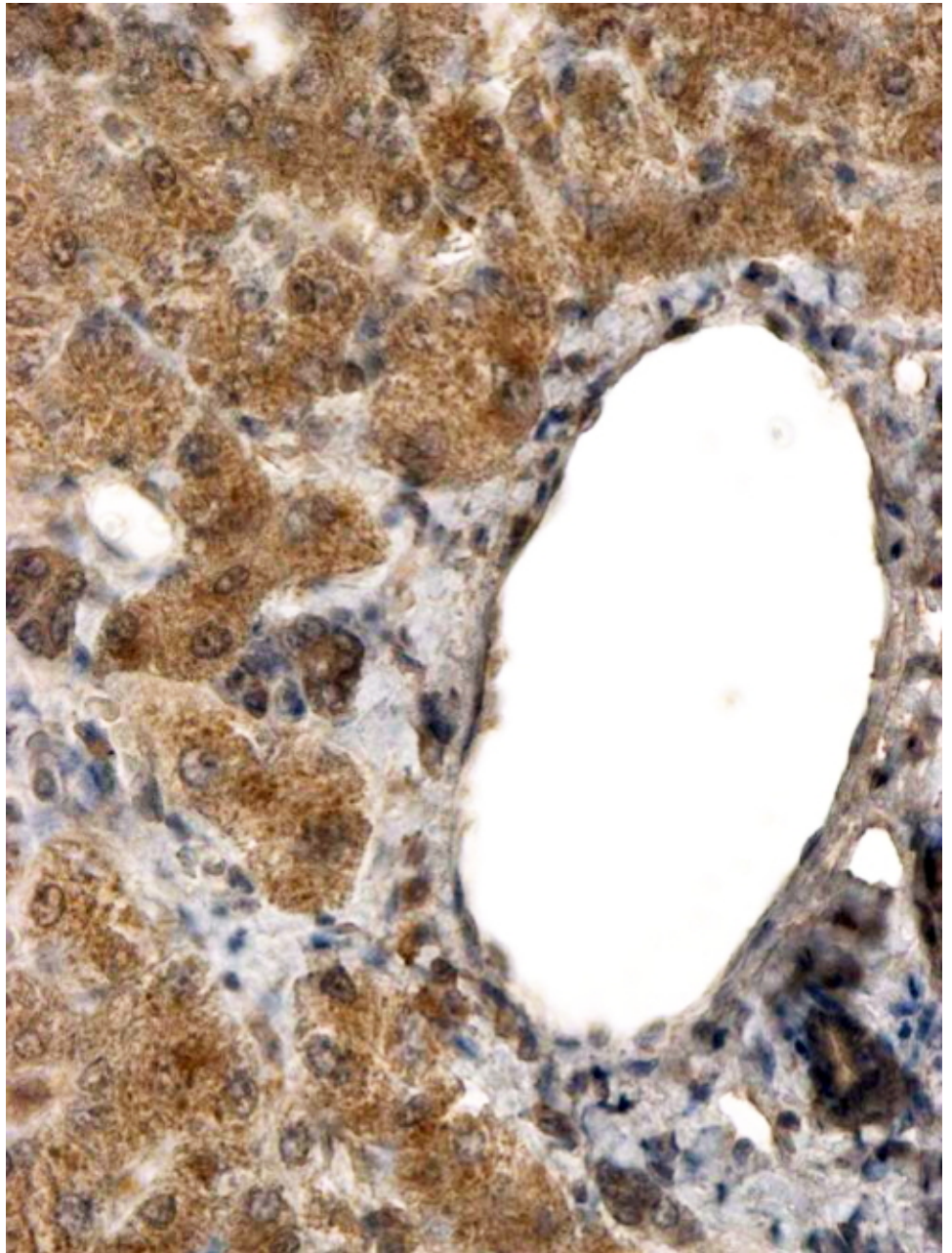
Peptide ELISA: antibody detection limit dilution 1:32000.

IHC: In paraffin embedded Human Liver shows textured cytoplasm staining in hepatocytes. Recommended concentration, 2-4µg/ml.

Species Reactivity

Tested: Human

Expected from sequence similarity: Human, Dog, Cow



EB10131 (2 μ g/ml) staining of paraffin embedded Human Liver. Steamed antigen retrieval with citrate buffer pH 6, HRP-staining.