

## International Office

### Everest Biotech Ltd

Vector Laboratories, Inc.  
6737 Mowry Ave  
Newark, CA 94560  
United States

Customer Service:

[customerservice@vectorlabs.com](mailto:customerservice@vectorlabs.com)

Technical Service:

[technical@vectorlabs.com](mailto:technical@vectorlabs.com)

Tel: +1 (800) 227-6666

[www.everestbiotech.com](http://www.everestbiotech.com)

**Research Use Only. Not for  
diagnostic or therapeutic use.**

## EB10132 - Goat Anti-ALDH3A2 Antibody

Size: 100µg specific antibody in 200µl



### Target Protein

**Principal Names:** alcohol dehydrogenase family 3, subfamily A2, aldehyde dehydrogenase 3 family, member A2, aldehyde dehydrogenase 3A2, aldehyde dehydrogenase 4, aldehyde dehydrogenase family 3 member A2, aldehyde dehydrogenase family 3, subfamily A2, Aldh4, FALDH, Aldh3a2

**Official Symbol:** Aldh3a2

**Accession Number(s):** NP\_113919.2

**Non-Human GeneID(s):** 11671 (mouse), 65183 (rat)

**Important Comments:** This antibody is expected to recognize both reported isoforms (NP\_001026976.1; NP\_000373.1).

### Immunogen

Peptide with sequence C-KGLKGESVNLRY, from the internal region of the protein sequence according to NP\_113919.2.

Please note the [peptide](#) is available for sale.

### Purification and Storage

Purified from goat serum by ammonium sulphate precipitation followed by antigen affinity chromatography using the immunizing peptide.

Supplied at 0.5 mg/ml in Tris saline, 0.02% sodium azide, pH7.3 with 0.5% bovine serum albumin.

Aliquot and store at -20°C. Minimize freezing and thawing.

### Applications Tested

**Peptide ELISA:** antibody detection limit dilution 1:32000.

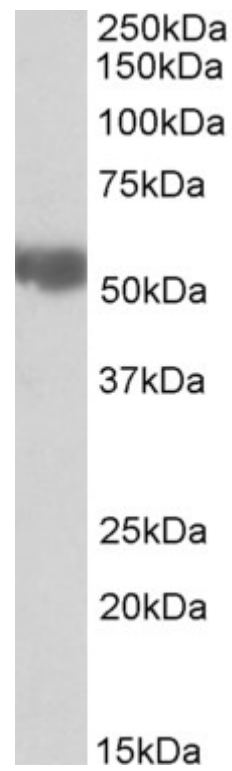
**Western blot:** Approx 55kDa band observed in Rat Liver lysates (calculated MW of 54.1kDa according to Rat NP\_113919.2). Recommended concentration: 0.03-0.1µg/ml. Primary incubation was 1 hour.

**IHC:** Paraffin embedded Human Adrenal Gland. Recommended concentration: 5µg/ml.

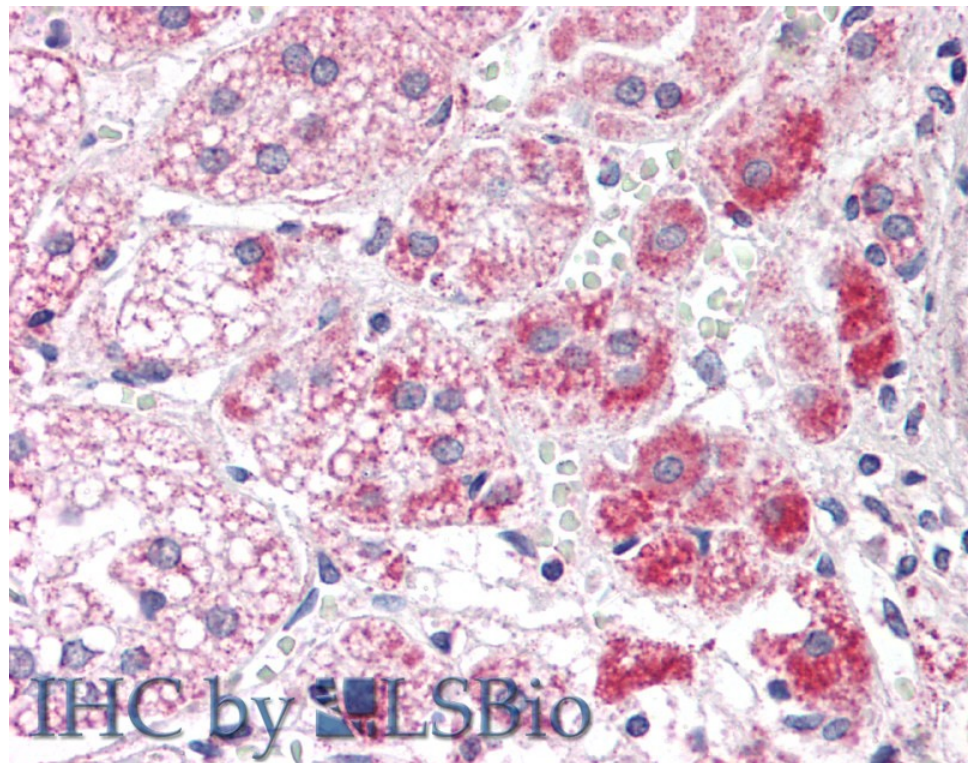
### Species Reactivity

**Tested:** Human, Rat

**Expected from sequence similarity:** Mouse, Rat



EB10132 (0.03µg/ml) staining of Rat Liver lysate (35µg protein in RIPA buffer). Detected by chemiluminescence.



EB10132 (5µg/ml) staining of paraffin embedded Human Adrenal Gland. Steamed antigen retrieval with citrate buffer pH 6, AP-staining.