



UK Office

Everest Biotech Ltd

Cherwell Innovation Centre
77 Heyford Park
Upper Heyford
Oxfordshire
OX25 5HD
UK

Enquiries:

info@everestbiotech.com

Sales:

sales@everestbiotech.com

Tech support:

support@everestbiotech.com

Tel: +44 (0)1869 238326

www.everestbiotech.com

**Research Use Only. Not for
diagnostic or therapeutic use.**

EB12392 - Goat Anti-ALDOA (aa86-96) Antibody

Size: 100µg specific antibody in 200µl



Target Protein

Principal Names: ALDOA, aldolase A, fructose-bisphosphate, ALDA, GSD12, fructose-1,6-bisphosphate triosephosphate-lyase, fructose-bisphosphate aldolase A, lung cancer antigen NY-LU-1, muscle-type aldolase

Official Symbol: ALDOA

Accession Number(s): NP_000025.1; NP_001230106.1

Human GeneID(s): [226](#)

Non-Human GeneID(s): 11674 (mouse), 24189 (rat)

Important Comments: This antibody is expected to recognize both reported isoforms (P_000025.1; NP_001230106.1). Reported variants represent identical protein: NP_908930.1, NP_908932.1, NP_001121089.1, NP_000025.1.

Immunogen

Peptide with sequence C-QKADDGRFPFQ, from the internal region of the protein sequence according to NP_000025.1; NP_001230106.1.

Please note the [peptide](#) is available for sale.

Purification and Storage

Purified from goat serum by ammonium sulphate precipitation followed by antigen affinity chromatography using the immunizing peptide.

Supplied at 0.5 mg/ml in Tris saline, 0.02% sodium azide, pH7.3 with 0.5% bovine serum albumin.

Aliquot and store at -20°C. Minimize freezing and thawing.

Applications Tested

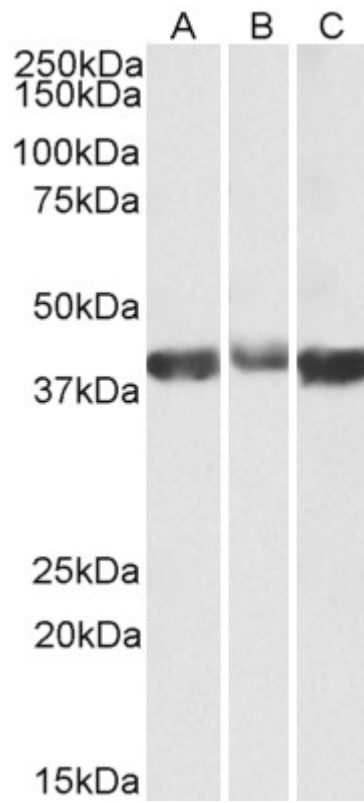
Peptide ELISA: antibody detection limit dilution 1:128000.

Western blot: Approx 39kDa band observed in Human, Mouse and Rat Skeletal Muscle lysates (calculated MW of 39.4kDa according to NP_000025.1). Recommended concentration: 0.03-0.1µg/ml.

Species Reactivity

Tested: Human, Mouse, Rat

Expected from sequence similarity: Human, Mouse, Rat, Cow



EB12392 (0.03 μ g/ml) staining of Human (A), Mouse (B) and Rat (C) Skeletal Muscle lysates (35 μ g protein in RIPA buffer). Primary incubation was 1 hour. Detected by chemiluminescence.