



UK Office

Everest Biotech Ltd

Cherwell Innovation Centre
77 Heyford Park
Upper Heyford
Oxfordshire
OX25 5HD
UK

Enquiries:

info@everestbiotech.com

Sales:

sales@everestbiotech.com

Tech support:

support@everestbiotech.com

Tel: +44 (0)1869 238326

www.everestbiotech.com

**Research Use Only. Not for
diagnostic or therapeutic use.**

EB12545 - Goat Anti-Alfy / WDFY3 Antibody

Size: 100µg specific antibody in 200µl



Target Protein

Principal Names: WDFY3, WD repeat and FYVE domain containing 3, ALFY, ZFYVE25, WD repeat and FYVE domain-containing protein 3, autophagy-linked FYVE protein

Official Symbol: WDFY3

Accession Number(s): NP_055806.2

Human GeneID(s): [23001](#)

Non-Human GeneID(s): 72145 (mouse), 305164 (rat)

Immunogen

Peptide with sequence C-SPERSTRQKKEFQT, from the internal region of the protein sequence according to NP_055806.2.

Please note the [peptide](#) is available for sale.

Purification and Storage

Purified from goat serum by ammonium sulphate precipitation followed by antigen affinity chromatography using the immunizing peptide.

Supplied at 0.5 mg/ml in Tris saline, 0.02% sodium azide, pH7.3 with 0.5% bovine serum albumin.

Aliquot and store at -20°C. Minimize freezing and thawing.

Applications Tested

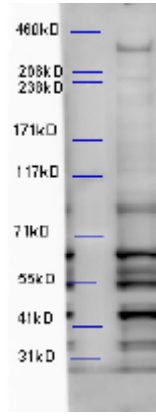
Peptide ELISA: antibody detection limit dilution 1:128000.

Western blot: Approx 400kDa band observed in Mouse Brain lysates (calculated MW of 395kDa according to NP_055806.2). Data obtained from anonymous customer. The lower molecular weight bands are non-specific. We call for caution when used for other assays than Western blot. Recommended concentration: 4-6µg/ml.

Species Reactivity

Tested: Mouse

Expected from sequence similarity: Human, Mouse, Rat, Cow



EB12545 (5 μ g/ml) staining of Mouse Brain lysate (35 μ g protein in RIPA buffer). Primary incubation was 1 hour.
Detected by chemiluminescence.