

International Office

Everest Biotech Ltd

Vector Laboratories, Inc.
6737 Mowry Ave
Newark, CA 94560
United States

Customer Service:

customerservice@vectorlabs.com

Technical Service:

technical@vectorlabs.com

Tel: +1 (800) 227-6666

www.everestbiotech.com

**Research Use Only. Not for
diagnostic or therapeutic use.**

EB05881 - Goat Anti-ALMS1 Antibody

Size: 100µg specific antibody in 200µl



Target Protein

Principal Names: ALMS1, Alstrom syndrome 1, ALSS, KIAA0328, DKFZp686A118, DKFZp686D1828

Official Symbol: ALMS1

Accession Number(s): NP_055935.4

Human GeneID(s): [7840](#)

Non-Human GeneID(s): 236266 (mouse), 297408 (rat)

Important Comments: The C terminus of ALMS1 shares an 8 amino acid stretch with two other human proteins: hypothetical protein (XP_169104) and ERAL1 (NP_005693). However, this stretch is located internally in these two proteins and so will most likely not cross-react with this antibody. The N terminus was not chosen as the peptide is expected to cyclise during synthesis.

Immunogen

Peptide with sequence C-RVTNQLLGRKVPWD, from the C Terminus of the protein sequence according to NP_055935.4.

Please note the [peptide](#) is available for sale.

Purification and Storage

Purified from goat serum by ammonium sulphate precipitation followed by antigen affinity chromatography using the immunizing peptide.

Supplied at 0.5 mg/ml in Tris saline, 0.02% sodium azide, pH7.3 with 0.5% bovine serum albumin.

Aliquot and store at -20°C. Minimize freezing and thawing.

Applications Tested

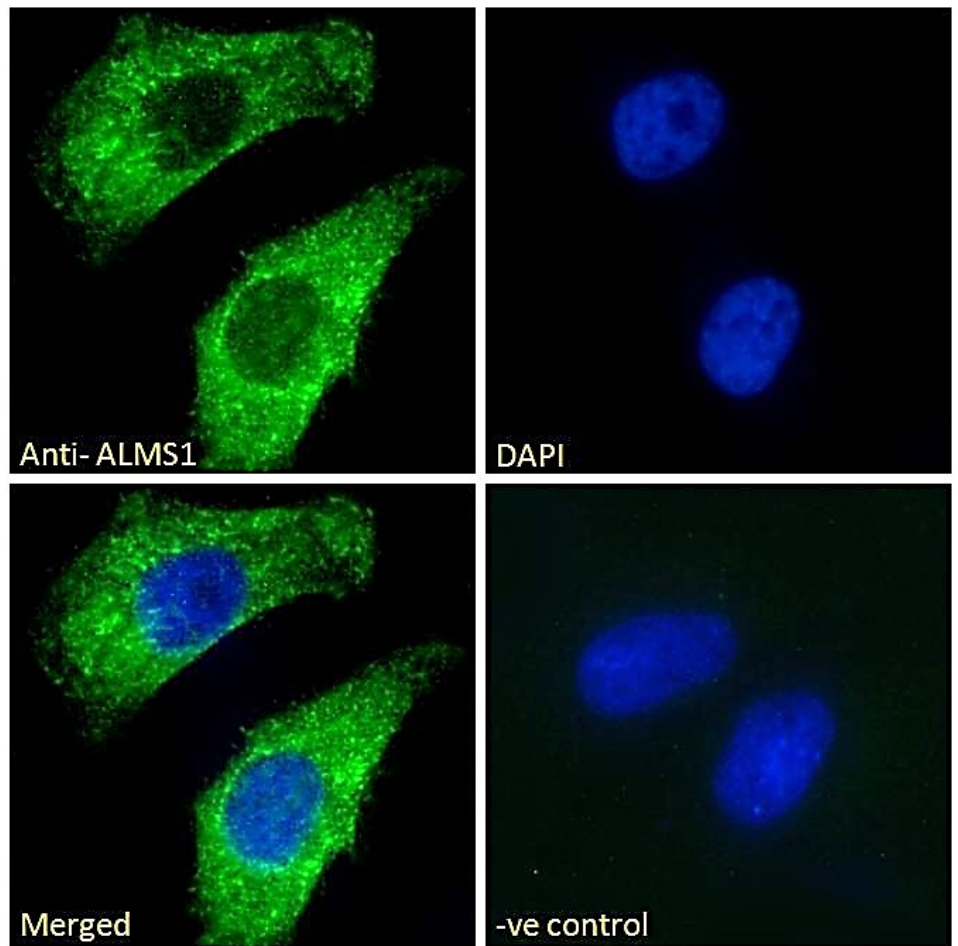
Peptide ELISA: antibody detection limit dilution 1:4000.

Immunofluorescence: Strong expression of the protein seen in the cytoplasm of HepG2 and HeLa cells. Recommended concentration: 10µg/ml.

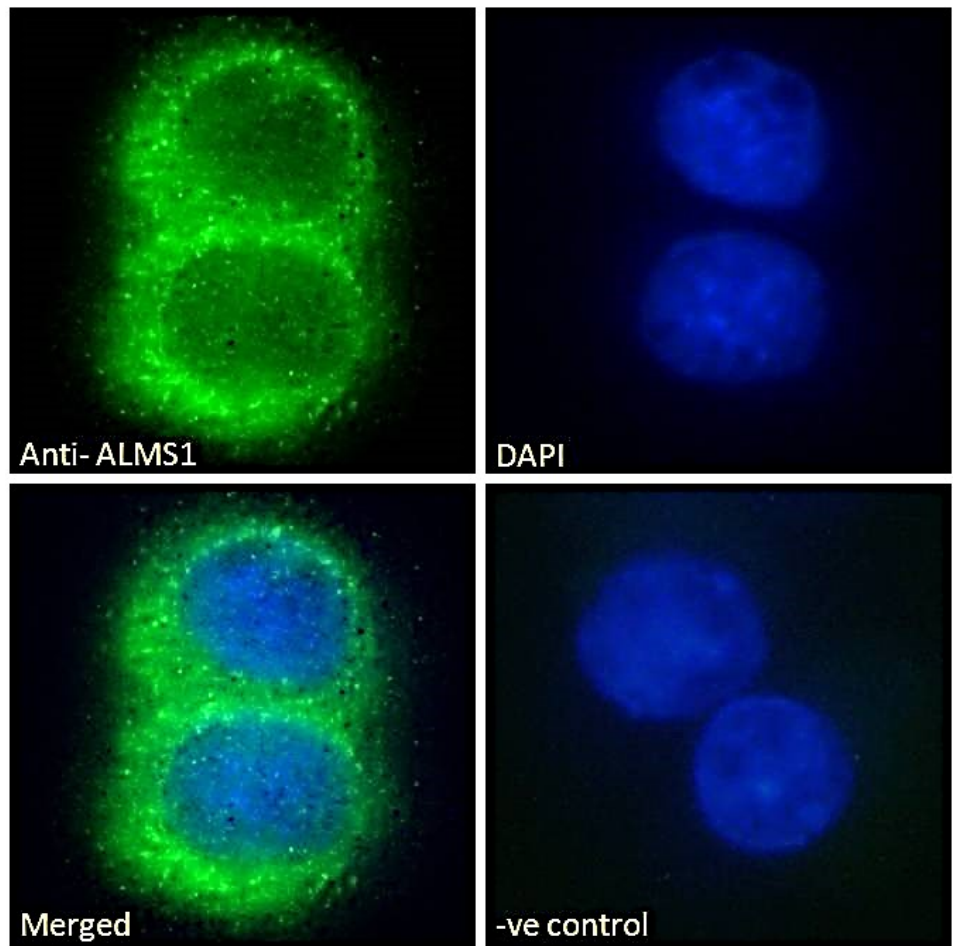
Species Reactivity

Tested: Human

Expected from sequence similarity: Human, Mouse, Rat, Dog, Cow



EB05881 Immunofluorescence analysis of paraformaldehyde fixed HeLa cells, permeabilized with 0.15% Triton. Primary incubation 1hr (10ug/ml) followed by Alexa Fluor 488 secondary antibody (2ug/ml), showing cytoplasmic staining. The nuclear stain is DAPI (blue). Negative control: Unimmunized goat IgG (10ug/ml) followed by Alexa Fluor 488 secondary antibody (2ug/ml).



EB05881 Immunofluorescence analysis of paraformaldehyde fixed HepG2 cells, permeabilized with 0.15% Triton. Primary incubation 1hr (10ug/ml) followed by Alexa Fluor 488 secondary antibody (2ug/ml), showing cytoplasmic staining. The nuclear stain is DAPI (blue). Negative control: Unimmunized goat IgG (10ug/ml) followed by Alexa Fluor 488 secondary antibody (2ug/ml).