



## International Office

### Everest Biotech Ltd

Vector Laboratories, Inc.  
6737 Mowry Ave  
Newark, CA 94560  
United States

Customer Service:

[customerservice@vectorlabs.com](mailto:customerservice@vectorlabs.com)

Technical Service:

[technical@vectorlabs.com](mailto:technical@vectorlabs.com)

Tel: +1 (800) 227-6666

[www.everestbiotech.com](http://www.everestbiotech.com)

**Research Use Only. Not for  
diagnostic or therapeutic use.**

## EB12364 - Goat Anti-alpha-1-antichymotrypsin (aa222-236) Antibody

Size: 100µg specific antibody in 200µl



### Target Protein

**Principal Names:** SERPINA3, serpin peptidase inhibitor, clade A (alpha-1 antiproteinase, antitrypsin), member 3, AACT, ACT, GIG25, alpha-1-antichymotrypsin, cell growth-inhibiting gene 24/25 protein, growth-inhibiting protein 24, growth-inhibiting protein 25, serine (or cysteine) proteinase inhibitor, clade A, member 3, serpin A3

**Official Symbol:** SERPINA3

**Accession Number(s):** NP\_001076.2

**Human GeneID(s):** [12](#)

### Immunogen

Peptide with sequence C-DPQDTHQSRFYLSKK, from the internal region of the protein sequence according to NP\_001076.2.

Please note the [peptide](#) is available for sale.

### Purification and Storage

Purified from goat serum by ammonium sulphate precipitation followed by antigen affinity chromatography using the immunizing peptide.

Supplied at 0.5 mg/ml in Tris saline, 0.02% sodium azide, pH7.3 with 0.5% bovine serum albumin.

Aliquot and store at -20°C. Minimize freezing and thawing.

### Applications Tested

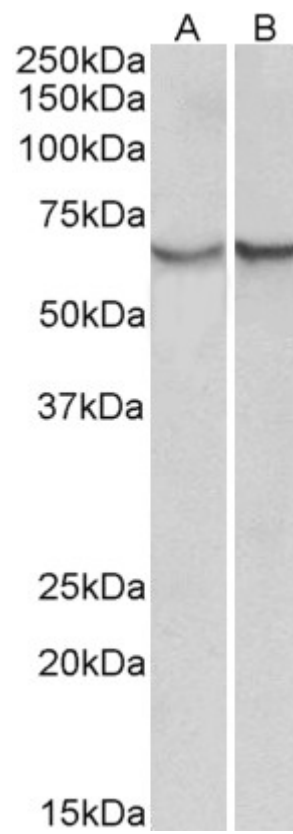
**Peptide ELISA:** antibody detection limit dilution 1:128000.

**Western blot:** Approx 65kDa band observed in Human Albumin-depleted Serum and Plasma lysates (calculated MW of 47.7kDa according to NP\_001076.2). The observed molecular weight corresponds to the glycosylated form. Recommended concentration: 0.3-1µg/ml.

### Species Reactivity

**Tested:** Human

**Expected from sequence similarity:** Human



EB12364 (0.3 $\mu$ g/ml) staining of albumin-depleted Serum (A) and Plasma(B) lysates (35 $\mu$ g protein in RIPA buffer). Primary incubation was 1 hour. Detected by chemiluminescence.