



International Office

Everest Biotech Ltd

Vector Laboratories, Inc.
6737 Mowry Ave
Newark, CA 94560
United States

Customer Service:

customerservice@vectorlabs.com

Technical Service:

technical@vectorlabs.com

Tel: +1 (800) 227-6666

www.everestbiotech.com

**Research Use Only. Not for
diagnostic or therapeutic use.**

EB12279 - Goat Anti-alpha-1-antitrypsin Antibody

Size: 100µg specific antibody in 200µl



Target Protein

Principal Names: SERPINA1, serpin peptidase inhibitor, clade A (alpha-1 antiproteinase, antitrypsin), member 1, A1A, A1AT, AAT, PI, PI1, PRO2275, alpha1AT, alpha-1 protease inhibitor, alpha-1-antiproteinase, alpha-1-antitrypsin, alpha-1-antitrypsin null, protease inhibitor 1 (anti-elastase), alpha-1-antitrypsin, serine (or cysteine) proteinase inhibitor, clade A, member 1, serpin A1

Official Symbol: SERPINA1

Accession Number(s): NP_000286.3

Human GeneID(s): [5265](#)

Important Comments: The immunizing peptide represents the N terminus of the mature protein. Reported variants represent identical protein: NP_001121174.1, NP_001121179.1, NP_001121172.1, NP_001121177.1, NP_001121178.1, NP_001121176.1, NP_001121175.1, NP_000286.3, NP_001121173.1, NP_001002236.1, NP_001002235.1.

Immunogen

Peptide with sequence C-QKTDTSHHDDQDHP, from the internal region (near N terminus) of the protein sequence according to NP_000286.3.

Please note the [peptide](#) is available for sale.

Purification and Storage

Purified from goat serum by ammonium sulphate precipitation followed by antigen affinity chromatography using the immunizing peptide.

Supplied at 0.5 mg/ml in Tris saline, 0.02% sodium azide, pH7.3 with 0.5% bovine serum albumin.

Aliquot and store at -20°C. Minimize freezing and thawing.

Applications Tested

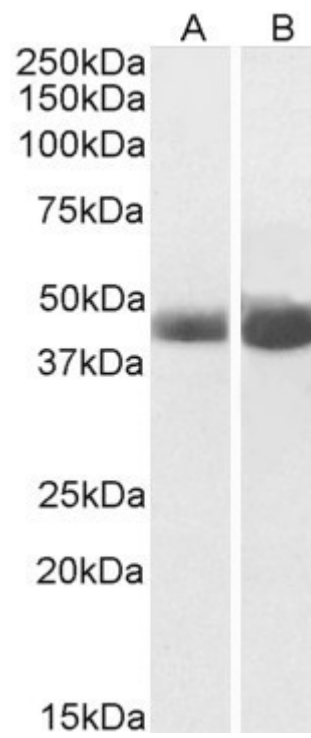
Peptide ELISA: antibody detection limit dilution 1:128000.

Western blot: Approx 48kDa band observed in Albumin-depleted Human Plasma and Serum lysates (calculated MW of 46.7kDa according to NP_000286.3). Recommended concentration: 0.03-0.1µg/ml. Primary incubation was 1 hour.

Species Reactivity

Tested: Human

Expected from sequence similarity: Human



EB12279 (0.05 μ g/ml) staining of Albumin-depleted Human Plasma (A) and Serum (B) lysates (35 μ g protein in RIPA buffer). Detected by chemiluminescence.