



UK Office

Everest Biotech Ltd

Cherwell Innovation Centre
77 Heyford Park
Upper Heyford
Oxfordshire
OX25 5HD
UK

Enquiries:

info@everestbiotech.com

Sales:

sales@everestbiotech.com

Tech support:

support@everestbiotech.com

Tel: +44 (0)1869 238326

www.everestbiotech.com

**Research Use Only. Not for
diagnostic or therapeutic use.**

EB12365 - Goat Anti-alpha-2-macroglobulin Antibody

Size: 100µg specific antibody in 200µl



Target Protein

Principal Names: A2M, alpha-2-macroglobulin, A2MD, CPAMD5, FWP007, S863-7, C3 and PZP-like alpha-2-macroglobulin domain-containing protein 5, alpha-2-M

Official Symbol: A2M

Accession Number(s): NP_000005.2

Human GeneID(s): [2](#)

Immunogen

Peptide with sequence C-TSLTVRVNYKDRSP, from the internal region of the protein sequence according to NP_000005.2.

Please note the [peptide](#) is available for sale.

Purification and Storage

Purified from goat serum by ammonium sulphate precipitation followed by antigen affinity chromatography using the immunizing peptide.

Supplied at 0.5 mg/ml in Tris saline, 0.02% sodium azide, pH7.3 with 0.5% bovine serum albumin.

Aliquot and store at -20°C. Minimize freezing and thawing.

Applications Tested

Peptide ELISA: antibody detection limit dilution 1:32000.

Western blot: Approx 200kDa band observed in Human Albumin-depleted Serum lysates (calculated MW of 163kDa according to NP_000005.2). The observed molecular weight corresponds to the glycosylated form. Recommended concentration: 0.5-2µg/ml. Primary incubation was 1 hour.

IHC: Paraffin embedded Human Placenta and Liver. Recommended concentration: 5µg/ml.

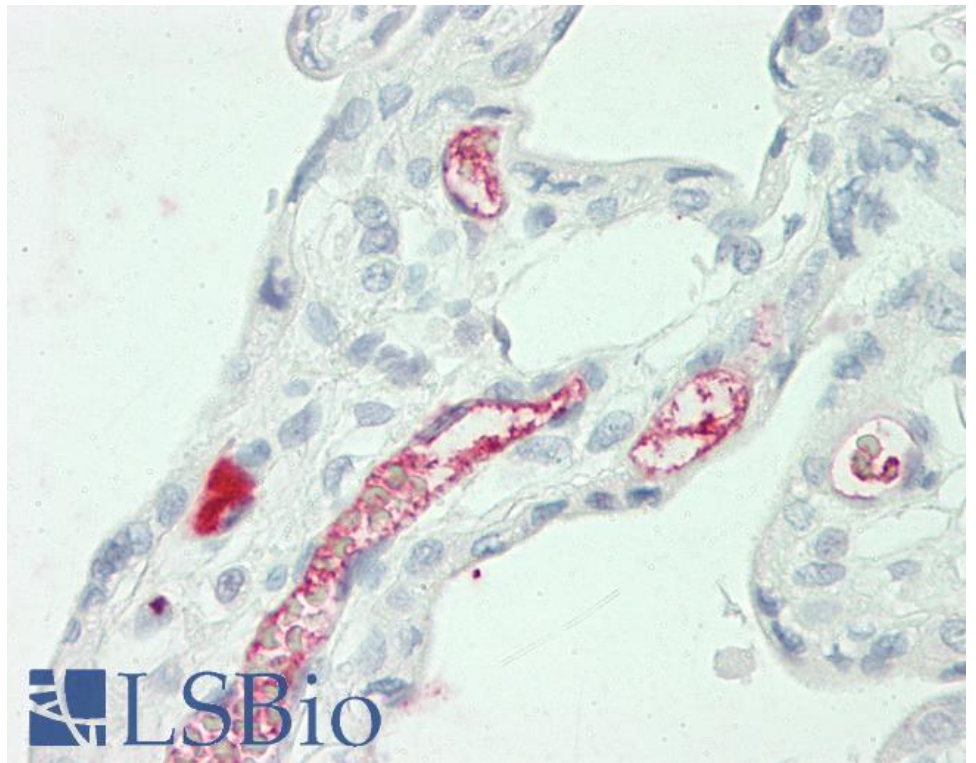
Species Reactivity

Tested: Human

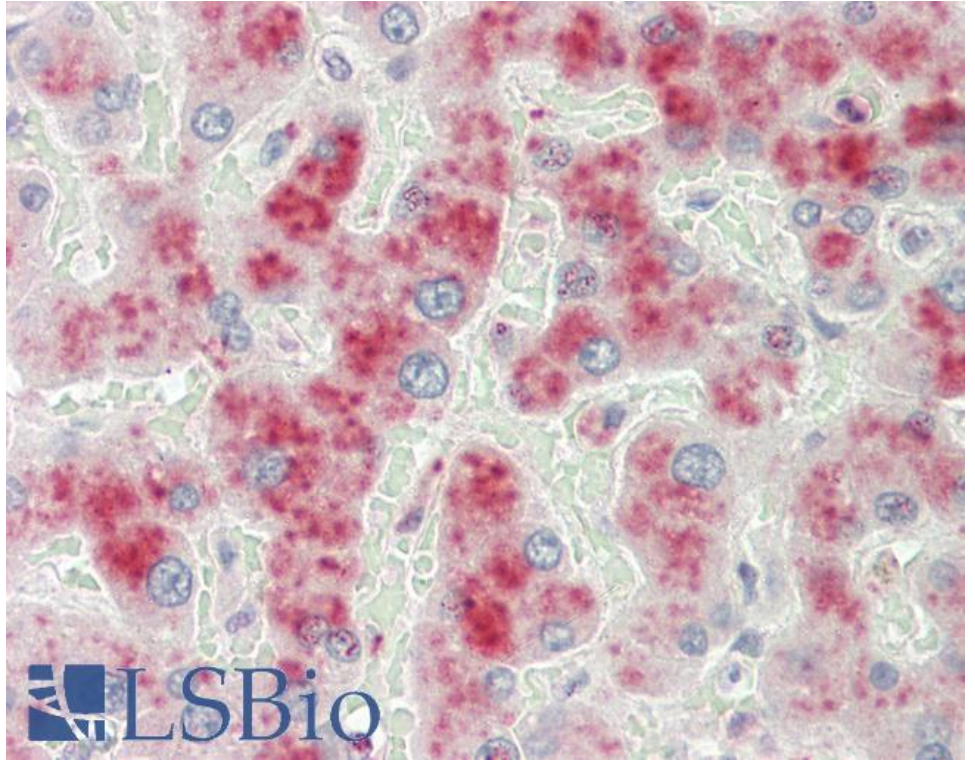
Expected from sequence similarity: Human



EB12365 (0.5 μ g/ml) staining of Human Albumin-depleted Serum lysate (35 μ g protein in RIPA buffer). Detected by chemiluminescence.



EB12365 (5 μ g/ml) staining of paraffin embedded Human Placenta. Steamed antigen retrieval with citrate buffer pH 6, AP-staining.



EB12365 (5µg/ml) staining of paraffin embedded Human Liver. Steamed antigen retrieval with citrate buffer pH 6, AP-staining.