



UK Office

Everest Biotech Ltd

Cherwell Innovation Centre
77 Heyford Park
Upper Heyford
Oxfordshire
OX25 5HD
UK

Enquiries:

info@everestbiotech.com

Sales:

sales@everestbiotech.com

Tech support:

support@everestbiotech.com

Tel: +44 (0)1869 238326

Fax: +44 (0)1869 238327

US Office

Everest Biotech c/o Abcore

405 Maple Street, Suite A106
Ramona,
CA 92065
USA

Inquiries:

info@everestbiotech.com

Sales:

usasales@everestbiotech.com

Tech support:

support@everestbiotech.com

Tel: 888-320-4628 (toll-free)

Fax: 888-841-9041

www.everestbiotech.com

**Research Use Only. Not for
diagnostic or therapeutic use.**

EB12346 - Goat Anti-alpha-fetoprotein (aa68-82) Antibody

Size: 100µg specific antibody in 200µl



Target Protein

Principal Names: AFP, alpha-fetoprotein, FETA, HPAFP, alpha-1-fetoprotein, alpha-fetoglobulin

Official Symbol: AFP

Accession Number(s): NP_001125.1

Human GeneID(s): [174](#)

Immunogen

Peptide with sequence C-KDALTAIEKPTGDEQ, from the internal region of the protein sequence according to NP_001125.1.

Please note the [peptide](#) is available for sale.

Purification and Storage

Purified from goat serum by ammonium sulphate precipitation followed by antigen affinity chromatography using the immunizing peptide.

Supplied at 0.5 mg/ml in Tris saline, 0.02% sodium azide, pH7.3 with 0.5% bovine serum albumin.

Aliquot and store at -20°C. Minimize freezing and thawing.

Applications Tested

Peptide ELISA: antibody detection limit dilution 1:128000.

Western blot: Approx 70kDa band observed in lysates of cell line HepG2 (calculated MW of 68.7kDa according to NP_001125.1). Recommended concentration: 0.3-1µg/ml.

IHC: Paraffin embedded Human Kidney. Recommended concentration: 5µg/ml.

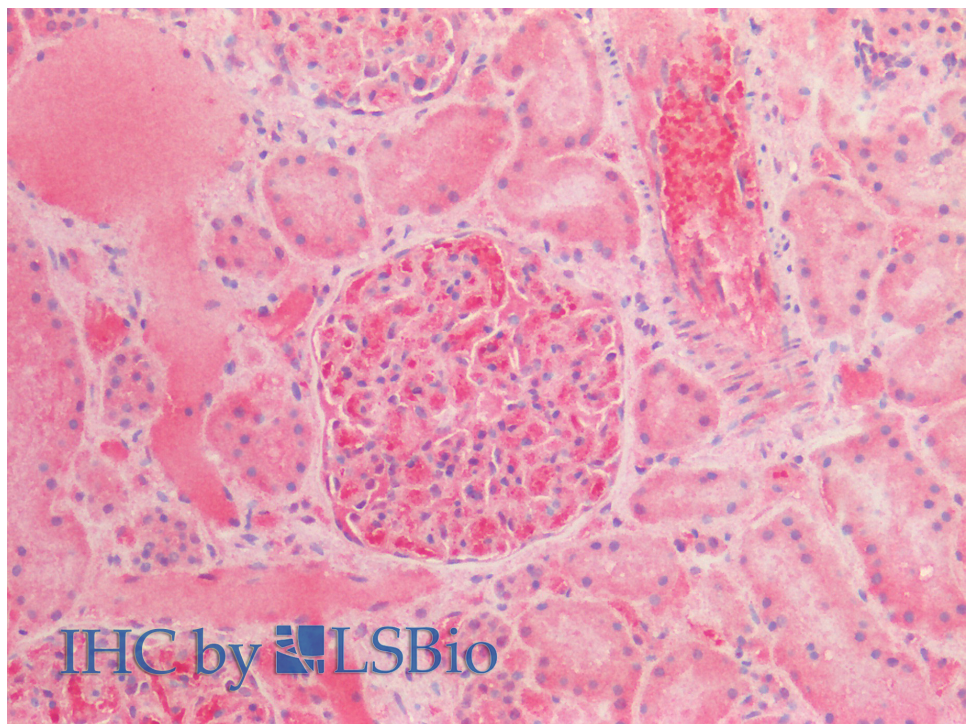
Species Reactivity

Tested: Human

Expected from sequence similarity: Human



EB12346 (0.3µg/ml) staining of HepG2 lysate (35µg protein in RIPA buffer). Primary incubation was 1 hour.
Detected by chemiluminescence.



EB12346 (5µg/ml) staining of paraffin embedded Human Kidney. Steamed antigen retrieval with citrate buffer pH 6, AP-staining.