

## International Office

### Everest Biotech Ltd

Vector Laboratories, Inc.  
6737 Mowry Ave  
Newark, CA 94560  
United States

Customer Service:

[customerservice@vectorlabs.com](mailto:customerservice@vectorlabs.com)

Technical Service:

[technical@vectorlabs.com](mailto:technical@vectorlabs.com)

Tel: +1 (800) 227-6666

[www.everestbiotech.com](http://www.everestbiotech.com)

**Research Use Only. Not for  
diagnostic or therapeutic use.**

## EB11713 - Goat Anti-Alpha-synuclein Antibody

Size: 100µg specific antibody in 200µl



### Target Protein

**Principal Names:** alpha-synuclein, NACP, non A-beta component of AD amyloid, PARK1, PARK4, PD1, SNCA, synuclein alpha-140, synuclein, alpha (non A4 component of amyloid precursor)

**Official Symbol:** SNCA

**Accession Number(s):** NP\_009292.1; NP\_000336.1

**Human GeneID(s):** [6622](#)

**Non-Human GeneID(s):** 20617 (mouse), 29219 (rat)

**Important Comments:** This antibody is expected to recognize both reported isoforms (NP\_009292.1; NP\_000336.1). Reported variants represent identical protein: NP\_000336.1, NP\_001139527.1, NP\_001139526.1

### Immunogen

Peptide with sequence C-ATGFVKKDKLGK, from the internal region of the protein sequence according to NP\_009292.1; NP\_000336.1.

Please note the [peptide](#) is available for sale.

### Purification and Storage

Purified from goat serum by ammonium sulphate precipitation followed by antigen affinity chromatography using the immunizing peptide.

Supplied at 0.5 mg/ml in Tris saline, 0.02% sodium azide, pH7.3 with 0.5% bovine serum albumin.

Aliquot and store at -20°C. Minimize freezing and thawing.

### Applications Tested

**Peptide ELISA:** antibody detection limit dilution 1:128000.

**Western blot:** Approx 17kDa band observed in Human Brain (Amygdala) and fetal Mouse Brain lysates (calculated MW of 14.5kDa according to Human NP\_000336.1 and Mouse NP\_033247.1). This molecular weight is routinely observed by other sources.

Recommended concentration: 0.1-0.3µg/ml. Primary incubation was 1 hour.

**IHC:** Paraffin embedded Human Brain (Cerebellum). Recommended concentration: 5µg/ml.

### Species Reactivity

**Tested:** Human, Mouse

**Expected from sequence similarity:** Human, Mouse, Rat, Dog, Pig

### Specific References

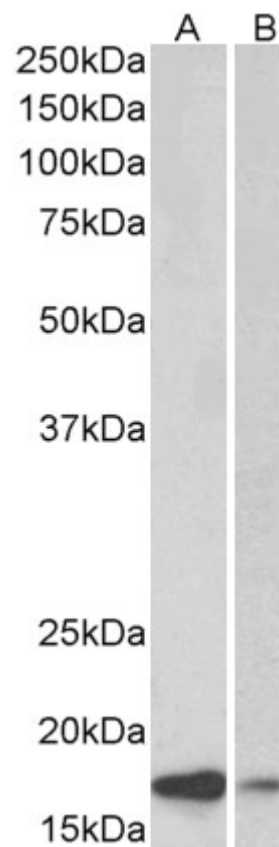
**This antibody has been successfully used in the following paper:**

Karina J. Vargas, P. L. Colosi, Eric Girardi, Jae-Min Park, Sreeganga S. Chandra  
α-Synuclein facilitates clathrin assembly in synaptic vesicle endocytosis  
(2021) <https://doi.org/10.1101/2020.04.29.069344>  
PMID: 0

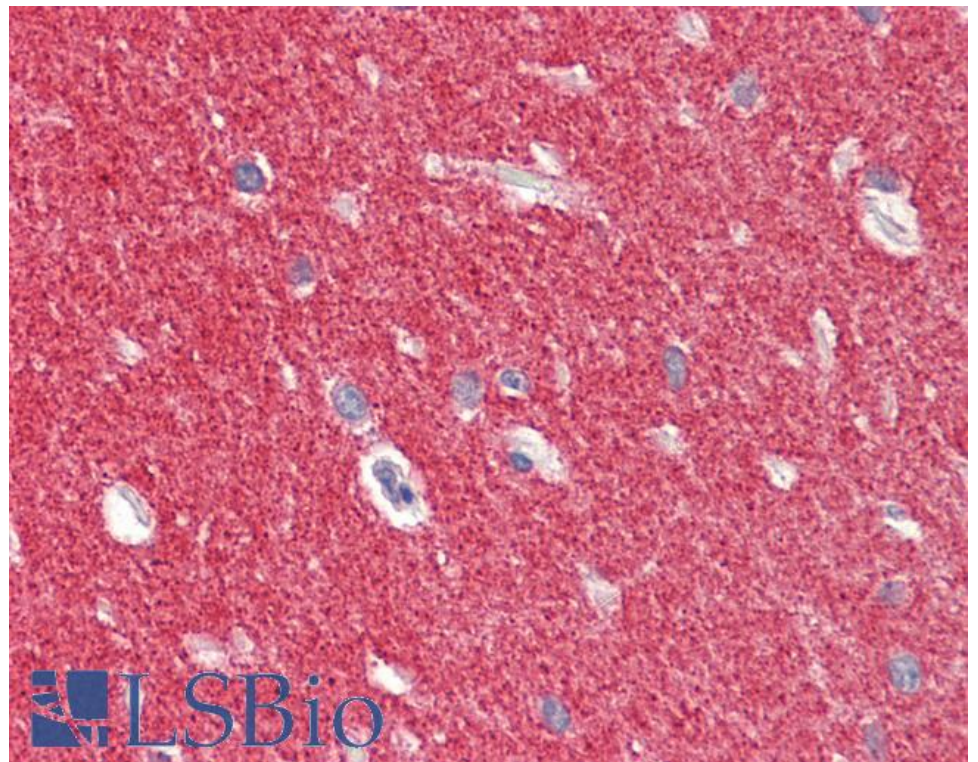
**This antibody has been successfully used in Western blot on Human:**

Sandro Huenchuguala & Birgitta Sjödén & Bengt Mannervik & Juan Segura-Aguilar  
Novel Alpha-Synuclein Oligomers Formed with the Aminochrome-Glutathione Conjugate  
Are Not Neurotoxic  
Neurotox Res. 2019 Feb;35(2):432-440.





EB11713 (0.1 $\mu$ g/ml) staining of Human Amygdala (A) and fetal Mouse (B) Brain lysate (35 $\mu$ g protein in RIPA buffer). Detected by chemiluminescence.



EB11713 (5 $\mu$ g/ml) staining of paraffin embedded Human Cerebellum. Steamed antigen retrieval with citrate buffer pH 6, AP-staining.