



## UK Office

### Everest Biotech Ltd

Cherwell Innovation Centre  
77 Heyford Park  
Upper Heyford  
Oxfordshire  
OX25 5HD  
UK

Enquiries:

[info@everestbiotech.com](mailto:info@everestbiotech.com)

Sales:

[sales@everestbiotech.com](mailto:sales@everestbiotech.com)

Tech support:

[support@everestbiotech.com](mailto:support@everestbiotech.com)

Tel: +44 (0)1869 238326

Fax: +44 (0)1869 238327

## US Office

### Everest Biotech c/o Abcore

405 Maple Street, Suite A106  
Ramona,  
CA 92065  
USA

Inquiries:

[info@everestbiotech.com](mailto:info@everestbiotech.com)

Sales:

[usasales@everestbiotech.com](mailto:usasales@everestbiotech.com)

Tech support:

[support@everestbiotech.com](mailto:support@everestbiotech.com)

Tel: 888-320-4628 (toll-free)

Fax: 888-841-9041

[www.everestbiotech.com](http://www.everestbiotech.com)

**Research Use Only. Not for  
diagnostic or therapeutic use.**

## EB11714 - Goat Anti-Alpha-synuclein (NACP140) Antibody

Size: 100µg specific antibody in 200µl



### Target Protein

**Principal Names:** alpha-synuclein, NACP, non A-beta component of AD amyloid, PARK1, PARK4, PD1, SNCA, synuclein alpha-140, synuclein, alpha (non A4 component of amyloid precursor)

**Official Symbol:** SNCA

**Accession Number(s):** NP\_000336.1

**Human GeneID(s):** [6622](#)

**Important Comments:** This antibody is expected to recognize reported isoform NACP140 (NP\_000336.1) only. Reported variants represent identical protein: NP\_000336.1, NP\_001139527.1, NP\_001139526.1

### Immunogen

Peptide with sequence C-KDQLGKNEEGAPQE, from the internal region of the protein sequence according to NP\_000336.1.

Please note the [peptide](#) is available for sale.

### Purification and Storage

Purified from goat serum by ammonium sulphate precipitation followed by antigen affinity chromatography using the immunizing peptide.

Supplied at 0.5 mg/ml in Tris saline, 0.02% sodium azide, pH7.3 with 0.5% bovine serum albumin.

Aliquot and store at -20°C. Minimize freezing and thawing.

### Applications Tested

**Peptide ELISA:** antibody detection limit dilution 1:32000.

**Western blot:** Approx 17kDa band observed in Human Brain (Amygdala) lysates (calculated MW of 14.5kDa according to NP\_000336.1). This molecular weight is routinely observed by other sources. Recommended concentration: 0.1-0.3µg/ml. Primary incubation was 1 hour.

**IHC:** Paraffin embedded Human Brain (Cerebellum). Recommended concentration: 5µg/ml.

### Species Reactivity

**Tested:** Human

**Expected from sequence similarity:** Human, Pig

### Specific Reference

**This antibody has been successfully used in WB and IF on Rat:**

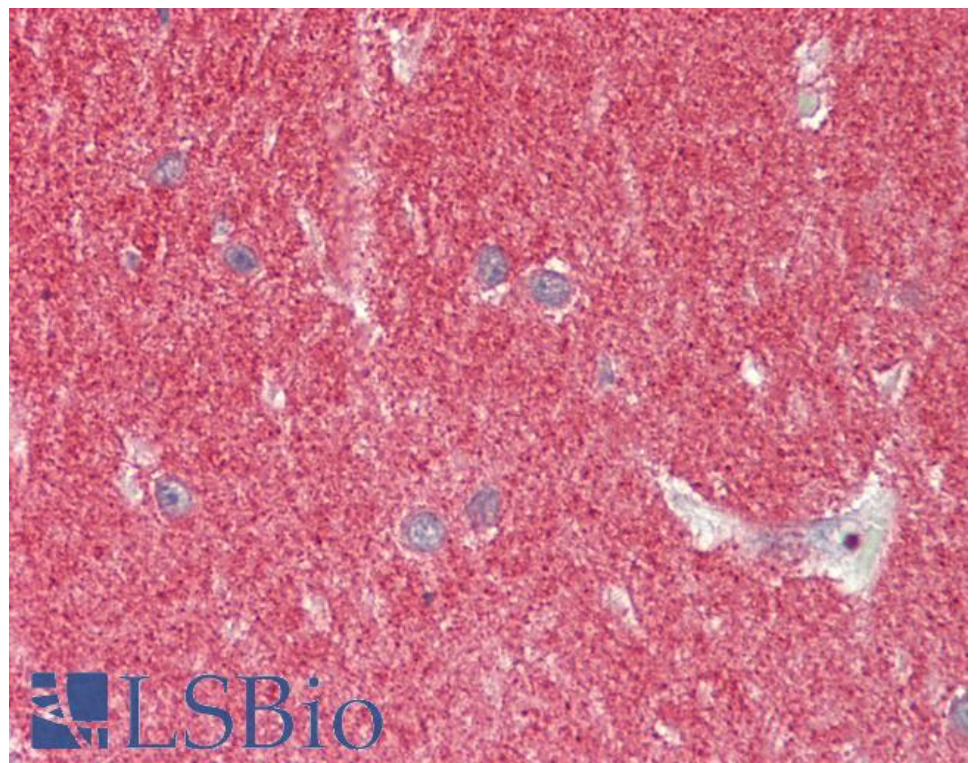
Muñoz P, Cardenas S, Huenchuguala S, Briceño A, Couve E, Paris I, Segura-Aguilar J.

DT-Diaphorase Prevents Aminochrome-Induced Alpha-Synuclein Oligomer Formation and Neurotoxicity. Toxicol Sci. 2015 May;145(1):37-47.

PMID: 25634539



EB11714 (0.1µg/ml) staining of Human Amygdala lysate (35µg protein in RIPA buffer). Detected by chemiluminescence.



EB11714 (5µg/ml) staining of paraffin embedded Human Cerebellum. Steamed antigen retrieval with citrate buffer Ph 6, AP-staining.