



## UK Office

### Everest Biotech Ltd

Cherwell Innovation Centre  
77 Heyford Park  
Upper Heyford  
Oxfordshire  
OX25 5HD  
UK

Enquiries:

[info@everestbiotech.com](mailto:info@everestbiotech.com)

Sales:

[sales@everestbiotech.com](mailto:sales@everestbiotech.com)

Tech support:

[support@everestbiotech.com](mailto:support@everestbiotech.com)

Tel: +44 (0)1869 238326

[www.everestbiotech.com](http://www.everestbiotech.com)

**Research Use Only. Not for  
diagnostic or therapeutic use.**

## EB08777 - Goat Anti-Alpha2-antiplasmin Antibody

Size: 100µg specific antibody in 200µl



### Target Protein

**Principal Names:** SERPINF2, serpin peptidase inhibitor, clade F (alpha-2 antiplasmin, pigment epithelium derived factor), member 2, A2AP, AAP, ALPHA-2-PI, API, PLI, alpha-2-plasmin inhibitor, serine (or cysteine) proteinase inhibitor, clade F (alpha-2 antiplasmin, pigment epithelium derived factor), member 2

**Official Symbol:** SERPINF2

**Accession Number(s):** NP\_000925.2; NP\_001159393.1

**Human GeneID(s):** [5345](#)

**Important Comments:** This antibody is expected to recognise both reported isoforms (NP\_000925.2; NP\_001159393.1). Reported variants represent identical protein (NP\_000925.2; NP\_001159392.1).

### Immunogen

Peptide with sequence C-KDFLQSLKGFPRGDK, from the internal region of the protein sequence according to NP\_000925.2; NP\_001159393.1.

Please note the [peptide](#) is available for sale.

### Purification and Storage

Purified from goat serum by ammonium sulphate precipitation followed by antigen affinity chromatography using the immunizing peptide.

Supplied at 0.5 mg/ml in Tris saline, 0.02% sodium azide, pH7.3 with 0.5% bovine serum albumin.

Aliquot and store at -20°C. Minimize freezing and thawing.

### Applications Tested

**Peptide ELISA:** antibody detection limit dilution 1:16000.

**Western blot:** Approx 70kDa band observed in lysates of cell line HepG2 (calculated MW of 54.6kDa according to NP\_000925.2). The observed molecular weight is observed by other sources. Recommended concentration: 0.3-1µg/ml. Primary incubation 1 hour at room temperature. This antibody has been successfully used in WB on Human: Abdul S et al. (2020) PMID: 32034861.

**IHC:** In paraffin embedded Human Liver shows spotty cytoplasm staining in hepatocytes. Recommended concentration: 3-5µg/ml.

**Immunofluorescence:** Strong expression of the protein seen in the cytoplasm of A431 cells. Recommended concentration: 10µg/ml.

**Flow Cytometry:** Flow cytometric analysis of A431 cells. Recommended concentration: 10ug/ml.

### Species Reactivity

**Tested:** Human

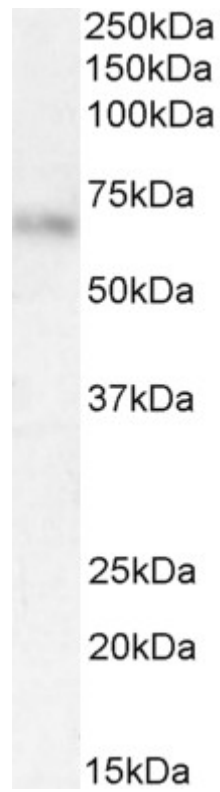
**Expected from sequence similarity:** Human

### Specific Reference

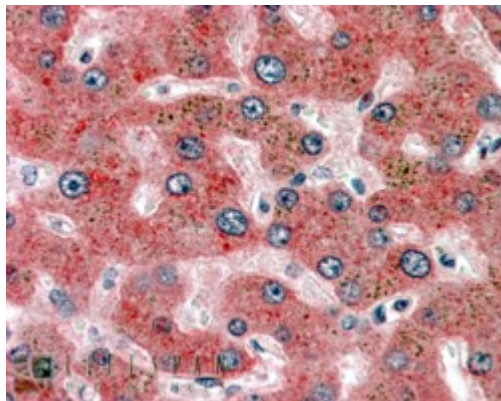
**This antibody has been successfully used in Western blot on Human:**

Abdul S, Dekkers DHW, Ariëns RAS, Leebeek FWG, Rijken DC, Uitte de Willige S  
On the localization of the cleavage site in human alpha-2-antiplasmin, involved in the generation of the non-plasminogen binding form.  
J Thromb Haemost. 2020 Feb 8

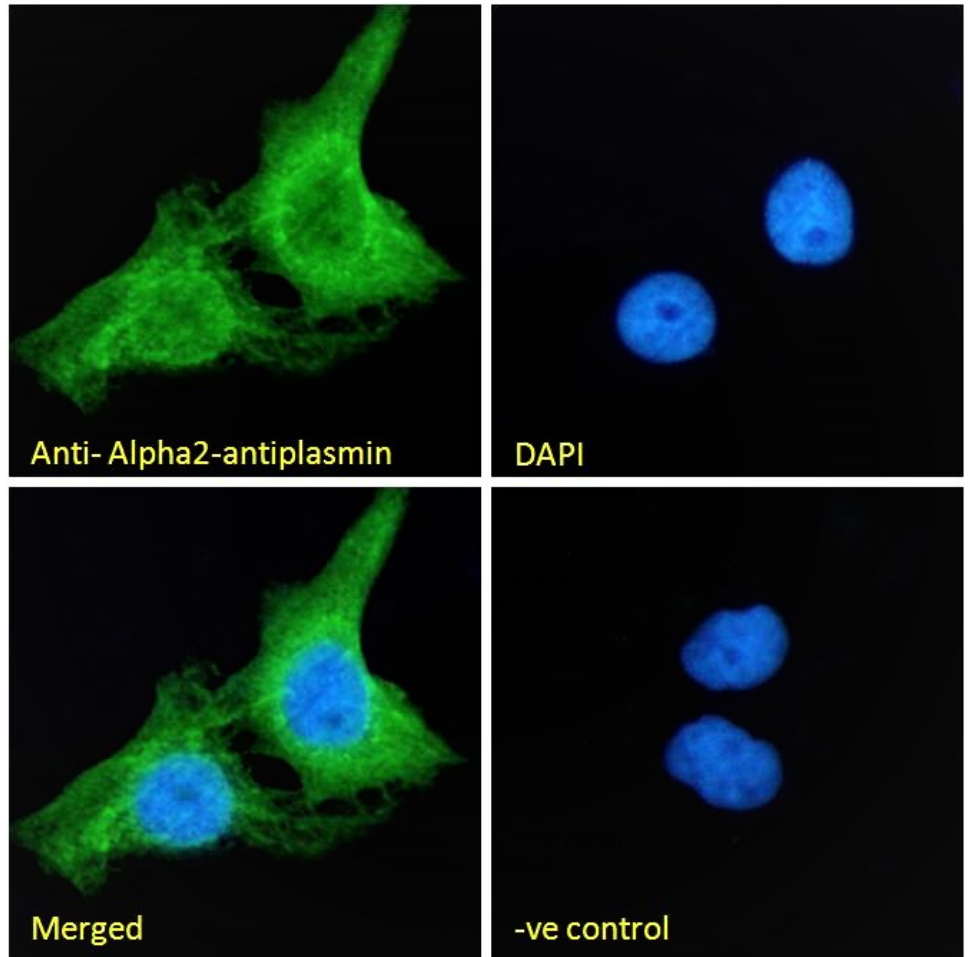
PMID: 32034861



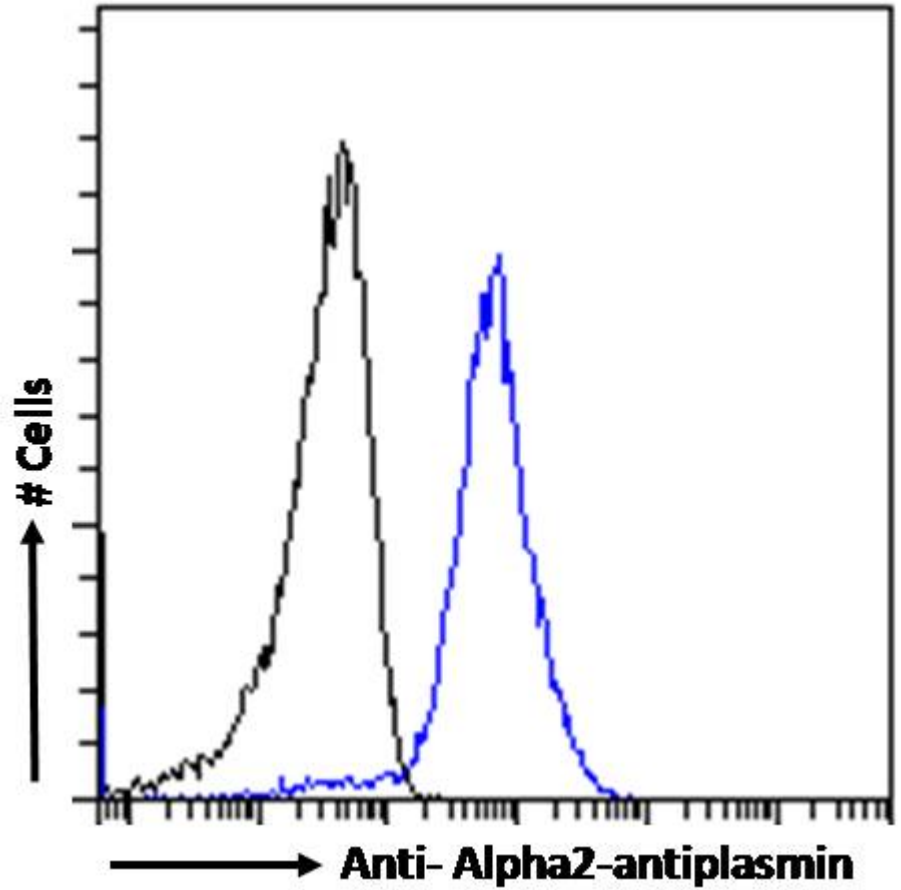
EB08777 (0.1 $\mu$ g/ml) staining of HepG2 cell lysate (35 $\mu$ g protein in RIPA buffer). Detected by chemiluminescence.



EB08777 (3.8 $\mu$ g/ml) staining of paraffin embedded Human Liver. Steamed antigen retrieval with citrate buffer pH 6, AP-staining.



EB08777 Immunofluorescence analysis of paraformaldehyde fixed A431 cells, permeabilized with 0.15% Triton. Primary incubation 1hr (10ug/ml) followed by Alexa Fluor 488 secondary antibody (2ug/ml), showing cytoplasmic staining. The nuclear stain is DAPI (blue). Negative control: Unimmunized goat IgG (10ug/ml) followed by Alexa Fluor 488 secondary antibody (2ug/ml).



EB08777 Flow cytometric analysis of paraformaldehyde fixed A431 cells (blue line), permeabilized with 0.5% Triton. Primary incubation 1hr (10ug/ml) followed by Alexa Fluor 488 secondary antibody (1ug/ml). IgG control: Unimmunized goat IgG (black line) followed by Alexa Fluor 488 secondary antibody.