



EB08777 - Goat Anti-Alpha2-antiplasmin Antibody

Size: 100µg specific antibody in 200µl



UK Office

Everest Biotech Ltd

Cherwell Innovation Centre
77 Heyford Park
Upper Heyford
Oxfordshire
OX25 5HD
UK

Enquiries:

info@everestbiotech.com

Sales:

sales@everestbiotech.com

Tech support:

support@everestbiotech.com

Tel: +44 (0)1869 238326

Fax: +44 (0)1869 238327

US Office

Everest Biotech c/o Abcore

405 Maple Street, Suite A106
Ramona,
CA 92065
USA

Inquiries:

info@everestbiotech.com

Sales:

usasales@everestbiotech.com

Tech support:

support@everestbiotech.com

Tel: 888-320-4628 (toll-free)

Fax: 888-841-9041

www.everestbiotech.com

Research Use Only. Not for diagnostic or therapeutic use.

Target Protein

Principal Names: SERPINF2, serpin peptidase inhibitor, clade F (alpha-2 antiplasmin, pigment epithelium derived factor), member 2, A2AP, AAP, ALPHA-2-PI, API, PLI, alpha-2-plasmin inhibitor, serine (or cysteine) proteinase inhibitor, clade F (alpha-2 antiplasmin, pigment epithelium derived factor), member 2

Official Symbol: SERPINF2

Accession Number(s): NP_000925.2; NP_001159393.1

Human GeneID(s): [5345](#)

Important Comments: This antibody is expected to recognise both reported isoforms (NP_000925.2; NP_001159393.1). Reported variants represent identical protein (NP_000925.2; NP_001159392.1).

Immunogen

Peptide with sequence C-KDFLQSLKGFPRGDK, from the internal region of the protein sequence according to NP_000925.2; NP_001159393.1.

Please note the [peptide](#) is available for sale.

Purification and Storage

Purified from goat serum by ammonium sulphate precipitation followed by antigen affinity chromatography using the immunizing peptide.

Supplied at 0.5 mg/ml in Tris saline, 0.02% sodium azide, pH7.3 with 0.5% bovine serum albumin.

Aliquot and store at -20°C. Minimize freezing and thawing.

Applications Tested

Peptide ELISA: antibody detection limit dilution 1:16000.

Western blot: Approx. 70kDa band observed in Human Duodenum and Ileum lysates (calculated MW of 54.6kDa according to NP_000925.2). The observed molecular weight corresponds to earlier findings in literature with different antibodies (Lee et al, Blood. 2004 May 15;103(10):3783-8.; PMID: 14751930). Recommended concentration: 0.3-1µg/ml. An additional band of unknown identity was also consistently observed at 26kDa. This band was successfully blocked by incubation with the immunising peptide.

IHC: In paraffin embedded Human Liver shows spotty cytoplasm staining in hepatocytes. Recommended concentration, 3-5µg/ml.

Enzyme immunoassay: This product has been successfully used in sandwich-type ELISA as the capturing antibody.

Species Reactivity

Tested: Human

Expected from sequence similarity: Human

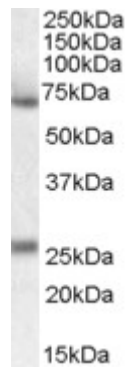
Specific Reference

This antibody has been successfully used in Western blot on Human:

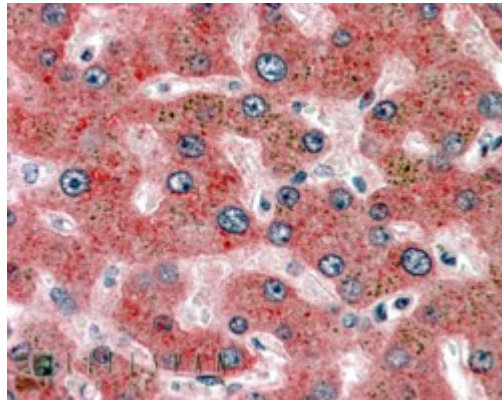
Abdul S, Dekkers DHW, Ariëns RAS, Leebeek FWG, Rijken DC, Uitte de Willige S
On the localization of the cleavage site in human alpha-2-antiplasmin, involved in the generation of the non-plasminogen binding form.

J Thromb Haemost. 2020 Feb 8

PMID: 32034861



EB08777 (0.1 μ g/ml) staining of Human Duodenum lysate (35 μ g protein in RIPA buffer). Primary incubation was 1 hour. Detected by chemiluminescence.



EB08777 (3.8 μ g/ml) staining of paraffin embedded Human Liver. Steamed antigen retrieval with citrate buffer pH 6, AP-staining.