



UK Office

Everest Biotech Ltd

Cherwell Innovation Centre
77 Heyford Park
Upper Heyford
Oxfordshire
OX25 5HD
UK

Enquiries:

info@everestbiotech.com

Sales:

sales@everestbiotech.com

Tech support:

support@everestbiotech.com

Tel: +44 (0)1869 238326

Fax: +44 (0)1869 238327

US Office

Everest Biotech c/o Abcore

405 Maple Street, Suite A106
Ramona,
CA 92065
USA

Inquiries:

info@everestbiotech.com

Sales:

usasales@everestbiotech.com

Tech support:

support@everestbiotech.com

Tel: 888-320-4628 (toll-free)

Fax: 888-841-9041

www.everestbiotech.com

**Research Use Only. Not for
diagnostic or therapeutic use.**

EB12977 - Goat Anti-ALPL (aa42-53) Antibody

Size: 100µg specific antibody in 200µl



Target Protein

Principal Names: ALPL, alkaline phosphatase, liver/bone/kidney, AP-TNAP, APTNAP, HOPS, TNAP, TNSALP, alkaline phosphatase liver/bone/kidney isozyme, alkaline phosphatase, tissue-nonspecific isozyme, alkaline phosphomonoesterase, glycerophosphatase, liver/bone/kidney-type

Official Symbol: ALPL

Accession Number(s): NP_000469.3

Human GeneID(s): [249](#)

Non-Human GeneID(s): 11647 (mouse), 25586 (rat)

Important Comments: This antibody is expected to recognize isoform 1 (NP_000469.3) only. The immunizing peptide represents the N terminus of the mature protein.

Immunogen

Peptide with sequence C-ELQKLNTNVAKN, from the internal region (near N terminus) of the protein sequence according to NP_000469.3.

Please note the [peptide](#) is available for sale.

Purification and Storage

Purified from goat serum by ammonium sulphate precipitation followed by antigen affinity chromatography using the immunizing peptide.

Supplied at 0.5 mg/ml in Tris saline, 0.02% sodium azide, pH7.3 with 0.5% bovine serum albumin.

Aliquot and store at -20°C. Minimize freezing and thawing.

Applications Tested

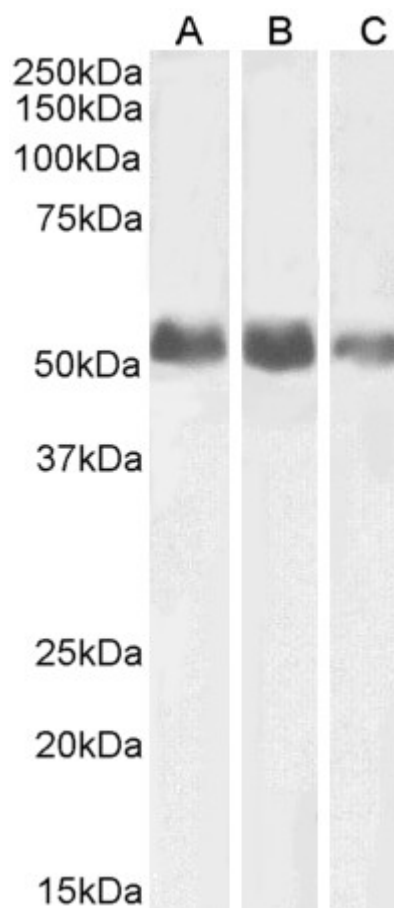
Peptide ELISA: antibody detection limit dilution 1:64000.

Western blot: Approx 55kDa band observed in Human Kidney, Lung and Adrenal Gland lysates (calculated MW of 57.3kDa according to NP_000469.3). Recommended concentration: 0.1-0.3µg/ml.

Species Reactivity

Tested: Human

Expected from sequence similarity: Human, Mouse, Rat



EB12977 (0.1µg/ml) staining of Human Kidney (A), Lung (B) and Adrenal Gland (C) lysates (35µg protein in RIPA buffer). Primary incubation was 1 hour. Detected by chemiluminescence.