



UK Office

Everest Biotech Ltd

Cherwell Innovation Centre
77 Heyford Park
Upper Heyford
Oxfordshire
OX25 5HD
UK

Enquiries:

info@everestbiotech.com

Sales:

sales@everestbiotech.com

Tech support:

support@everestbiotech.com

Tel: +44 (0)1869 238326

www.everestbiotech.com

**Research Use Only. Not for
diagnostic or therapeutic use.**

EB05316 - Goat Anti-Alsin / ALS2 Antibody

Size: 100µg specific antibody in 200µl



Target Protein

Principal Names: ALS2, amyotrophic lateral sclerosis 2 (juvenile), ALSJ, PLSJ, IAHSP, KIAA1563, ALS2CR6, FLJ31851, MGC87187, alsin

Official Symbol: ALS2

Accession Number(s): NP_065970.2

Human GeneID(s): [57679](#)

Immunogen

Peptide with sequence LKACYYQIQREKLN, from the C Terminus of the protein sequence according to NP_065970.2.

Please note the [peptide](#) is available for sale.

Purification and Storage

Purified from goat serum by ammonium sulphate precipitation followed by antigen affinity chromatography using the immunizing peptide.

Supplied at 0.5 mg/ml in Tris saline, 0.02% sodium azide, pH7.3 with 0.5% bovine serum albumin.

Aliquot and store at -20°C. Minimize freezing and thawing.

Applications Tested

Peptide ELISA: antibody detection limit dilution 1:8000.

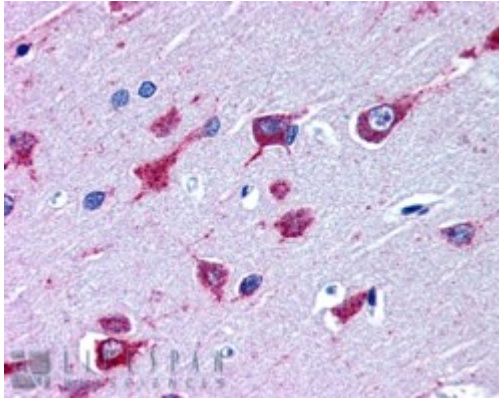
Western blot: No signal obtained yet but low background observed in Human Brain extracts at upto 1µg/ml.

IHC: In paraffin embedded Human Cortex shows pixulate cytoplasm staining in some neuronal cells. Recommended concentration, 3-5µg/ml.

Species Reactivity

Tested: Human

Expected from sequence similarity: Human, Mouse, Rat, Dog, Cow



EB05316 (3.8 μ g/ml) staining of paraffin embedded Human Cortex. Steamed antigen retrieval with citrate buffer pH 6, AP-staining.