



UK Office

Everest Biotech Ltd

Cherwell Innovation Centre
77 Heyford Park
Upper Heyford
Oxfordshire
OX25 5HD
UK

Enquiries:

info@everestbiotech.com

Sales:

sales@everestbiotech.com

Tech support:

support@everestbiotech.com

Tel: +44 (0)1869 238326

www.everestbiotech.com

**Research Use Only. Not for
diagnostic or therapeutic use.**

EB12973 - Goat Anti-ALT1 / GPT1 (aa391-405) Antibody

Size: 100µg specific antibody in 200µl



Target Protein

Principal Names: GPT, glutamic-pyruvate transaminase (alanine aminotransferase), AAT1, ALT1, GPT1, GPT 1, alanine aminotransferase 1, glutamate pyruvate transaminase 1, glutamic--alanine transaminase 1, glutamic--pyruvic transaminase 1, glutamic-alanine transaminase 1

Official Symbol: GPT

Accession Number(s): NP_005300.1

Human GeneID(s): [2875](#)

Immunogen

Peptide with sequence KLTEQVFNEAPGISC, from the internal region of the protein sequence according to NP_005300.1.

Please note the [peptide](#) is available for sale.

Purification and Storage

Purified from goat serum by ammonium sulphate precipitation followed by antigen affinity chromatography using the immunizing peptide.

Supplied at 0.5 mg/ml in Tris saline, 0.02% sodium azide, pH7.3 with 0.5% bovine serum albumin.

Aliquot and store at -20°C. Minimize freezing and thawing.

Applications Tested

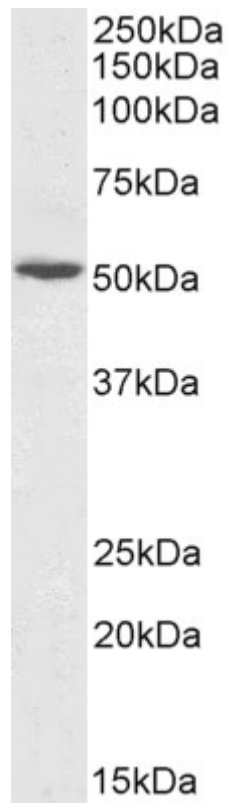
Peptide ELISA: antibody detection limit dilution 1:128000.

Western blot: Approx 52kDa band observed in Human Liver lysates (calculated MW of 54.6kDa according to NP_005300.1). Recommended concentration: 0.1-0.3µg/ml. Primary incubation 1 hour at room temperature.

Species Reactivity

Tested: Human

Expected from sequence similarity: Human



EB12973 (0.1 μ g/ml) staining of Human Liver lysate (35 μ g protein in RIPA buffer). Detected by chemiluminescence.