



UK Office

Everest Biotech Ltd

Cherwell Innovation Centre
77 Heyford Park
Upper Heyford
Oxfordshire
OX25 5HD
UK

Enquiries:

info@everestbiotech.com

Sales:

sales@everestbiotech.com

Tech support:

support@everestbiotech.com

Tel: +44 (0)1869 238326

www.everestbiotech.com

**Research Use Only. Not for
diagnostic or therapeutic use.**

EB12625 - Goat Anti-AMHR2 (aa88-99) Antibody

Size: 100µg specific antibody in 200µl



Target Protein

Principal Names: AMHR2, anti-Mullerian hormone receptor, type II, AMHR, MISR2, MISRII, MR11, AMH type II receptor, MIS type II receptor, Muellierian inhibiting substance type II receptor, Mullerian inhibiting substance type II receptor, anti-Muellerian hormone type II receptor

Official Symbol: AMHR2

Accession Number(s): NP_065434.1; NP_001158162.1; NP_001158163.1

Human GeneID(s): [269](#)

Important Comments: This antibody is expected to recognize all reported isoforms (NP_065434.1; NP_001158162.1; NP_001158163.1).

Immunogen

Peptide with sequence ESLHCDPSPRAH, from the internal region of the protein sequence according to NP_065434.1; NP_001158162.1; NP_001158163.1.

Please note the [peptide](#) is available for sale.

Purification and Storage

Purified from goat serum by ammonium sulphate precipitation followed by antigen affinity chromatography using the immunizing peptide.

Supplied at 0.5 mg/ml in Tris saline, 0.02% sodium azide, pH7.3 with 0.5% bovine serum albumin.

Aliquot and store at -20°C. Minimize freezing and thawing.

Applications Tested

Peptide ELISA: antibody detection limit dilution 1:128000.

Western blot: Approx. 60+65kDa bands were observed in lysates of cell line MCF7 (calculated MW of 62.7kDa according to NP_065434.1). Recommended concentration: 0.3-1µg/ml. Primary incubation 1 hour at room temperature.

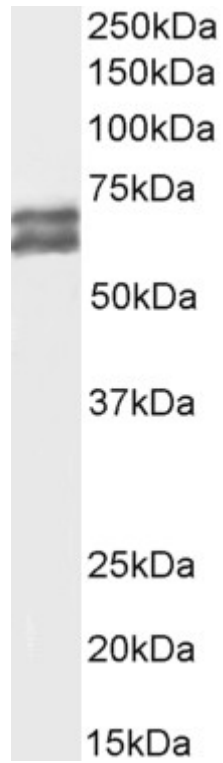
Immunofluorescence: Strong expression of the protein seen in MCF7 cells. Recommended concentration: 10µg/ml.

Flow Cytometry: Flow cytometric analysis of MCF7 cells. Recommended concentration: 10µg/ml.

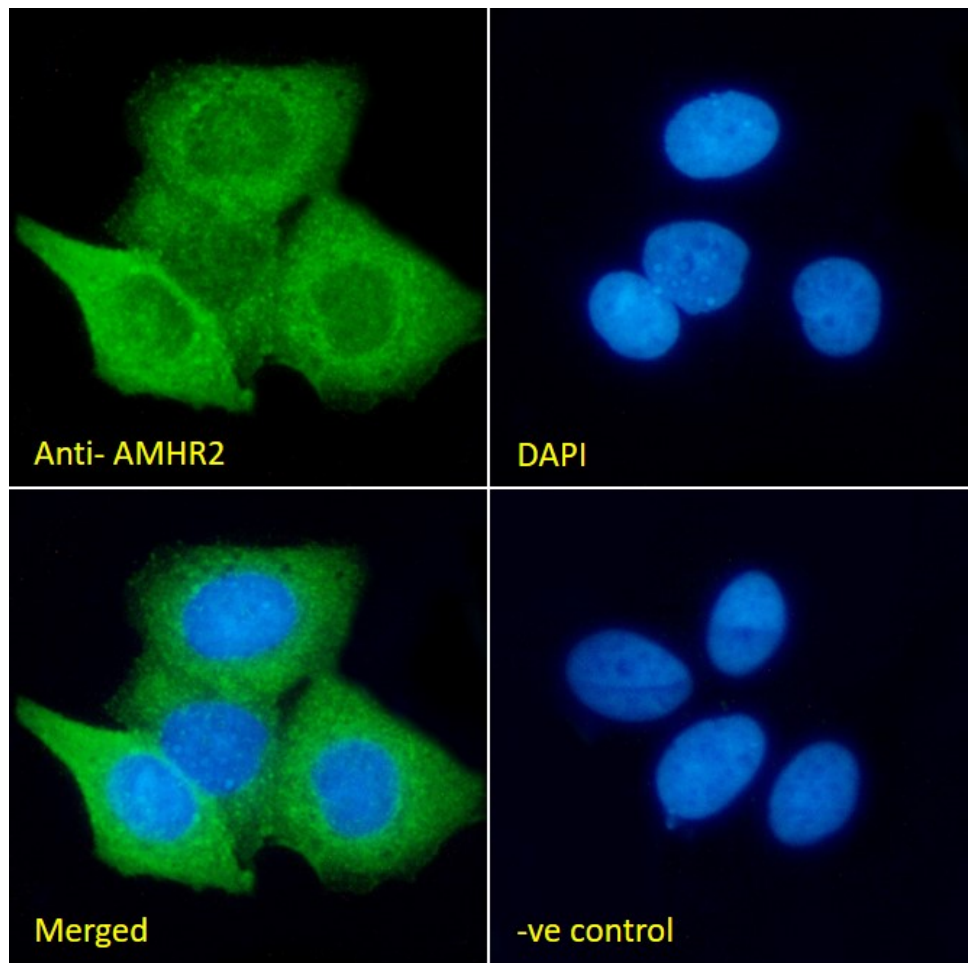
Species Reactivity

Tested: Human

Expected from sequence similarity: Human

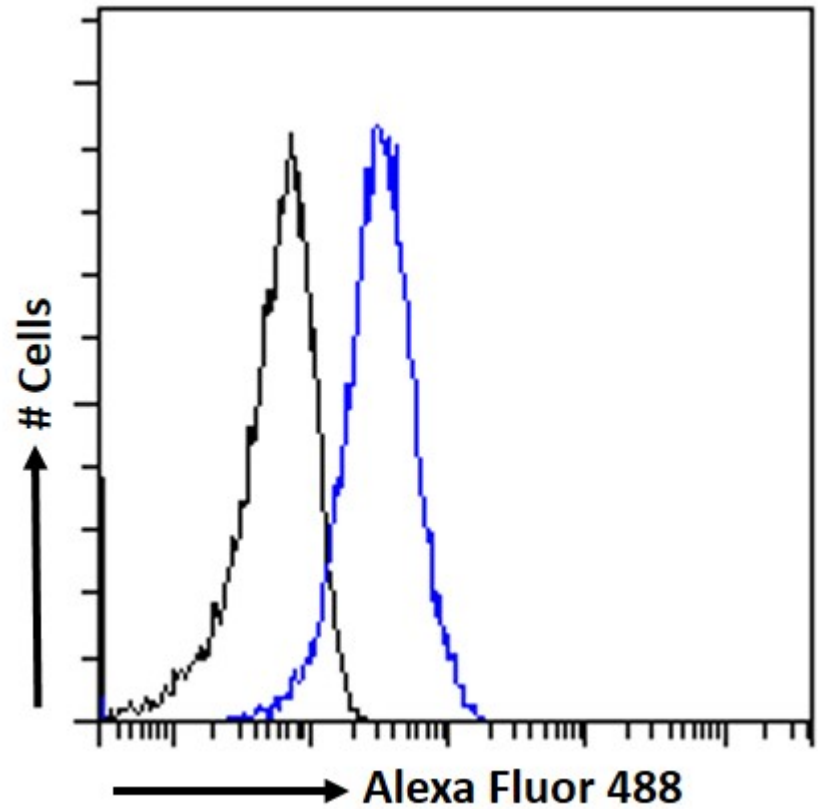


EB12625 (1µg/ml) staining of MCF7 cell lysate (35µg protein in RIPA buffer). Detected by chemiluminescence.



EB12625 Immunofluorescence analysis of paraformaldehyde fixed MCF7 cells, permeabilized with 0.15% Triton. Primary incubation 1hr (10ug/ml) followed by Alexa Fluor 488 secondary antibody (2ug/ml), showing cytoplasmic and some nuclear staining. The nuclear stain is DAPI (blue). Negative control: Unimmunized goat IgG (10ug/ml)

followed by Alexa Fluor 488 secondary antibody (2ug/ml).



EB12625 Flow cytometric analysis of paraformaldehyde fixed MCF7 cells (blue line), permeabilized with 0.5% Triton. Primary incubation 1hr (10ug/ml) followed by Alexa Fluor 488 secondary antibody (1ug/ml). IgG control: Unimmunized goat IgG (black line) followed by Alexa Fluor 488 secondary antibody.