



## International Office

### Everest Biotech Ltd

Vector Laboratories, Inc.  
6737 Mowry Ave  
Newark, CA 94560  
United States

Customer Service:

[customerservice@vectorlabs.com](mailto:customerservice@vectorlabs.com)

Technical Service:

[technical@vectorlabs.com](mailto:technical@vectorlabs.com)

Tel: +1 (800) 227-6666

[www.everestbiotech.com](http://www.everestbiotech.com)

**Research Use Only. Not for  
diagnostic or therapeutic use.**

## EB05935 - Goat Anti-Amisyn / STXBP6 Antibody

Size: 100µg specific antibody in 200µl



### Target Protein

**Principal Names:** STXBP6, syntaxin binding protein 6 (amisyn), amisyn, HSPC156, amisyn, syntaxin binding protein 6, FLJ39638, OTTHUMP00000178754

**Official Symbol:** STXBP6

**Accession Number(s):** NP\_054897.4

**Human GeneID(s):** [29091](#)

**Non-Human GeneID(s):** 217517 (mouse)

### Immunogen

Peptide with sequence SAKSAISKEIFAP-C, from the N Terminus of the protein sequence according to NP\_054897.4.

Please note the [peptide](#) is available for sale.

### Purification and Storage

Purified from goat serum by ammonium sulphate precipitation followed by antigen affinity chromatography using the immunizing peptide.

Supplied at 0.5 mg/ml in Tris saline, 0.02% sodium azide, pH7.3 with 0.5% bovine serum albumin.

Aliquot and store at -20°C. Minimize freezing and thawing.

### Applications Tested

**Peptide ELISA:** antibody detection limit dilution 1:32000.

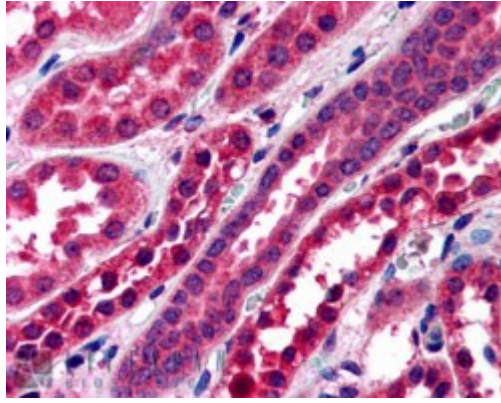
**Western blot:** Preliminary experiments gave bands at both approx 25kDa and approx 45kDa in Human Brain extracts at 0.1µg/ml. Please note that currently we cannot find an explanation in the literature for the 45kDa band we observe given the predicted size of approx. 24Kda according to NP\_054897. We would appreciate any feedback from people in the field - have any results been reported with other antibodies/lysates? Have any splice variants/modified forms been reported?

**IHC:** In paraffin embedded Human Kidney shows cytoplasm staining of PCT and DCT cells Recommended concentration, 3-5µg/ml.

### Species Reactivity

**Tested:** Human

**Expected from sequence similarity:** Human, Mouse, Rat, Dog, Cow



EB05935 (3.8µg/ml) staining of paraffin embedded Human Kidney. Steamed antigen retrieval with citrate buffer pH 6, AP-staining.