



International Office

Everest Biotech Ltd

Vector Laboratories, Inc.
6737 Mowry Ave
Newark, CA 94560
United States

Customer Service:

customerservice@vectorlabs.com

Technical Service:

technical@vectorlabs.com

Tel: +1 (800) 227-6666

www.everestbiotech.com

**Research Use Only. Not for
diagnostic or therapeutic use.**

EB10937 - Goat Anti-AMPA1 / GLUR1 (aa264-277) Antibody

Size: 100µg specific antibody in 200µl



Target Protein

Principal Names: GRIA1, glutamate receptor, ionotropic, AMPA 1, GLUH1, GLUR1, GLURA, GluA1, HBGR1, MGC133252, AMPA 1, glur-1, glur-A, glur-K1, glutamate receptor 1

Official Symbol: GRIA1

Accession Number(s): NP_000818.2; NP_001107655.1

Human GeneID(s): [2890](#)

Non-Human GeneID(s): 14799 (mouse), 50592 (rat)

Important Comments: This antibody is expected to recognize both reported isoforms (NP_000818.2; NP_001107655.1).

Immunogen

Peptide with sequence C-KIMQQWKNSDARD, from the internal region of the protein sequence according to NP_000818.2; NP_001107655.1.

Please note the [peptide](#) is available for sale.

Purification and Storage

Purified from goat serum by ammonium sulphate precipitation followed by antigen affinity chromatography using the immunizing peptide.

Supplied at 0.5 mg/ml in Tris saline, 0.02% sodium azide, pH7.3 with 0.5% bovine serum albumin.

Aliquot and store at -20°C. Minimize freezing and thawing.

Applications Tested

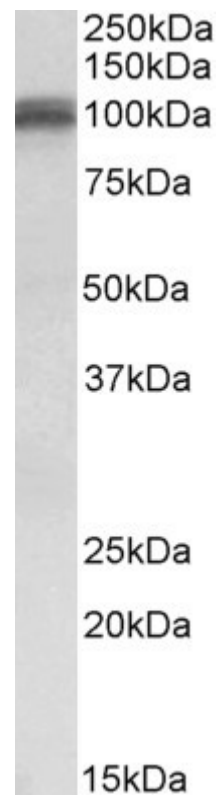
Peptide ELISA: antibody detection limit dilution 1:16000.

Western blot: Approx 100kDa band observed in Human Brain (Cerebellum) lysates (calculated MW of 102kDa according to NP_000818.2). Recommended concentration: 0.1-0.3µg/ml. Primary incubation was 1 hour.

Species Reactivity

Tested: Human

Expected from sequence similarity: Human, Mouse, Rat, Dog, Cow



EB10937 (0.1µg/ml) staining of Human Cerebellum lysate (35µg protein in RIPA buffer). Detected by chemiluminescence.