



## UK Office

### Everest Biotech Ltd

Cherwell Innovation Centre  
77 Heyford Park  
Upper Heyford  
Oxfordshire  
OX25 5HD  
UK

Enquiries:

[info@everestbiotech.com](mailto:info@everestbiotech.com)

Sales:

[sales@everestbiotech.com](mailto:sales@everestbiotech.com)

Tech support:

[support@everestbiotech.com](mailto:support@everestbiotech.com)

Tel: +44 (0)1869 238326

[www.everestbiotech.com](http://www.everestbiotech.com)

**Research Use Only. Not for  
diagnostic or therapeutic use.**

## EB11159 - Goat Anti-Amyloid beta peptide (mouse) Antibody

Size: 100µg specific antibody in 200µl



### Target Protein

**Principal Names:** Abeta, Abpp, Adap, Ag, alzheimer disease amyloid A4 protein homolog, amyloid beta (A4) precursor protein, amyloid beta A4 protein, amyloidogenic glycoprotein, appican, betaApp, Cvap, E030013M08Rik, protease nexin II, App

**Official Symbol:** App

**Accession Number(s):** NP\_001185752.1; NP\_031497.2; NP\_001185753.1;  
NP\_001185754.1; NP\_001185755.1

**Non-Human GeneID(s):** 11820 (mouse), 54226 (rat)

**Important Comments:** This antibody is expected to recognize all reported isoforms of mAPP (NP\_001185752.1; NP\_031497.2; NP\_001185753.1; NP\_001185754.1; NP\_001185755.1) and to recognize all lengths of the putative mouse Amyloid beta peptide.

### Immunogen

Peptide with sequence DAEFGHDSGFVHRHQK-C, from the N Terminus of the protein sequence according to NP\_001185752.1; NP\_031497.2; NP\_001185753.1; NP\_001185754.1; NP\_001185755.1.

Please note the [peptide](#) is available for sale.

### Purification and Storage

Purified from goat serum by ammonium sulphate precipitation followed by antigen affinity chromatography using the immunizing peptide.

Supplied at 0.5 mg/ml in Tris saline, 0.02% sodium azide, pH7.3 with 0.5% bovine serum albumin.

Aliquot and store at -20°C. Minimize freezing and thawing.

### Applications Tested

**Peptide ELISA:** antibody detection limit dilution 1:64000.

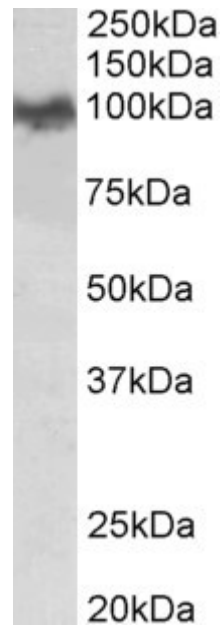
**Western blot:** Approx 100kDa band observed in Mouse Brain lysates (calculated MW of 86.7kDa according to NP\_001185752.1). Recommended concentration: 0.03-0.1µg/ml. Primary incubation was 1 hour.

**IHC:** Paraffin embedded Human Brain (Cerebellum). Recommended concentration: 5µg/ml.

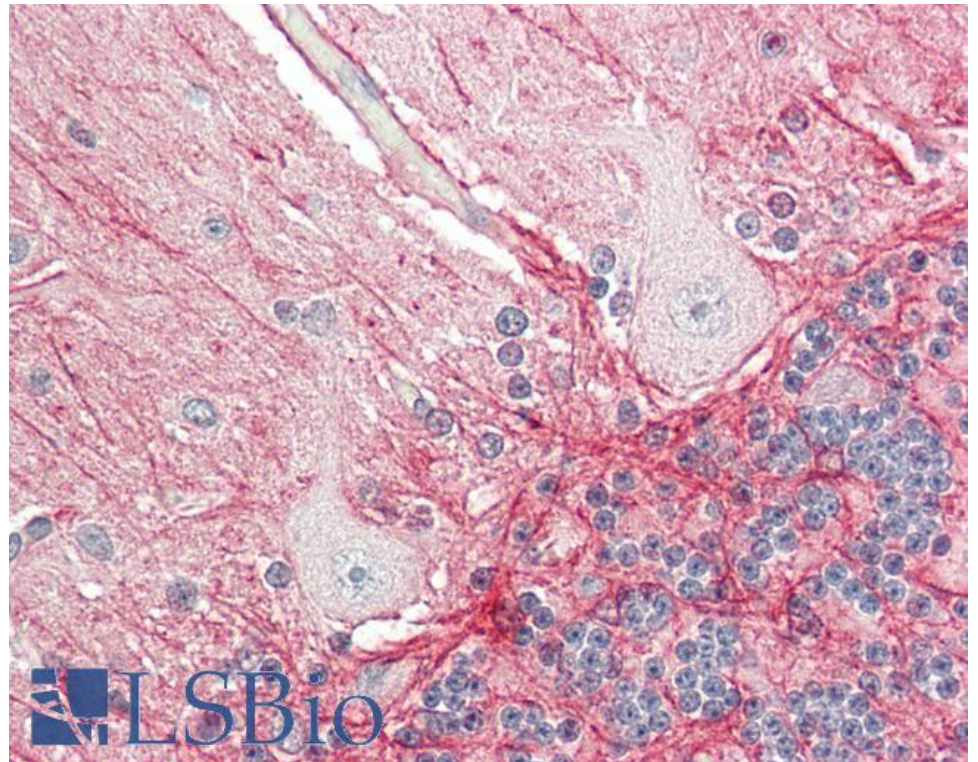
### Species Reactivity

**Tested:** Human, Mouse

**Expected from sequence similarity:** Mouse, Rat



EB11159 (0.03µg/ml) staining of Mouse Brain lysate (35µg protein in RIPA buffer). Detected by chemiluminescence.



EB11159 (5µg/ml) staining of paraffin embedded Human Cerebellum. Steamed antigen retrieval with citrate buffer Ph 6, AP-staining.