



International Office

Everest Biotech Ltd

Vector Laboratories, Inc.
6737 Mowry Ave
Newark, CA 94560
United States

Customer Service:

customerservice@vectorlabs.com

Technical Service:

technical@vectorlabs.com

Tel: +1 (800) 227-6666

www.everestbiotech.com

**Research Use Only. Not for
diagnostic or therapeutic use.**

EB06441 - Goat Anti-Androgen Receptor Antibody

Size: 100µg specific antibody in 200µl



Target Protein

Principal Names: androgen receptor, dihydrotestosterone receptor, AR, KD, AIS, TFM, DHTR, SBMA, NR3C4, SMAX1, HUMARA, HYSP1, androgen receptor, dihydrotestosterone receptor, RP11-383C12.1

Official Symbol: AR

Accession Number(s): NP_000035.2

Human GeneID(s): [367](#)

Non-Human GeneID(s): 11835 (mouse), 24208 (rat)

Important Comments: This antibody is expected to recognize isoform 1 (NP_000035.2) only.

Immunogen

Peptide with sequence EVQLGLGRVYPRPPSC, from the N Terminus of the protein sequence according to NP_000035.2.

Please note the [peptide](#) is available for sale.

Purification and Storage

Purified from goat serum by ammonium sulphate precipitation followed by antigen affinity chromatography using the immunizing peptide.

Supplied at 0.5 mg/ml in Tris saline, 0.02% sodium azide, pH7.3 with 0.5% bovine serum albumin.

Aliquot and store at -20°C. Minimize freezing and thawing.

Applications Tested

Peptide ELISA: antibody detection limit dilution 1:64000.

Western blot: Approx 100kDa band observed in Human Cerebellum lysates (calculated MW of 99.2kDa according to NP_000035.2). Recommended concentration: 0.1-0.5µg/ml.

Primary incubation 1 hour at room temperature. **Negative Control:** Human Pancreas lysate. Preliminary testing was unsuccessful on Mouse and Rat for this particular batch.

IHC: In paraffin embedded Human Prostate shows nuclear staining in the secretory cells of the gland. Recommended concentration: 2-3µg/ml. Cryosections of Mouse Hypothalamus and Amygdala. Recommended dilution range: 1:20,000.

Immunofluorescence: Strong expression of the protein seen in the mitochondria/cytoplasm of MCF7 and U2OS cells. Recommended concentration: 10µg/ml.

Chromatin Immunoprecipitation: A six-fold increased presence of the FKBP5 locus observed when comparing the precipitations using EB06441 with non-specific goat IgG to bring down Androgen Receptor in a chromatin lysate from DHT-stimulated HEC50 cells.

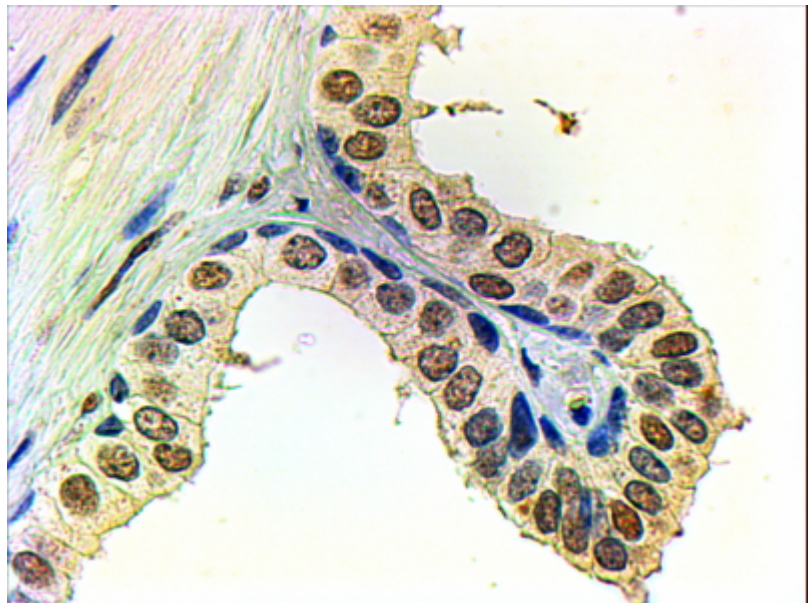
Species Reactivity

Tested: Human, Mouse

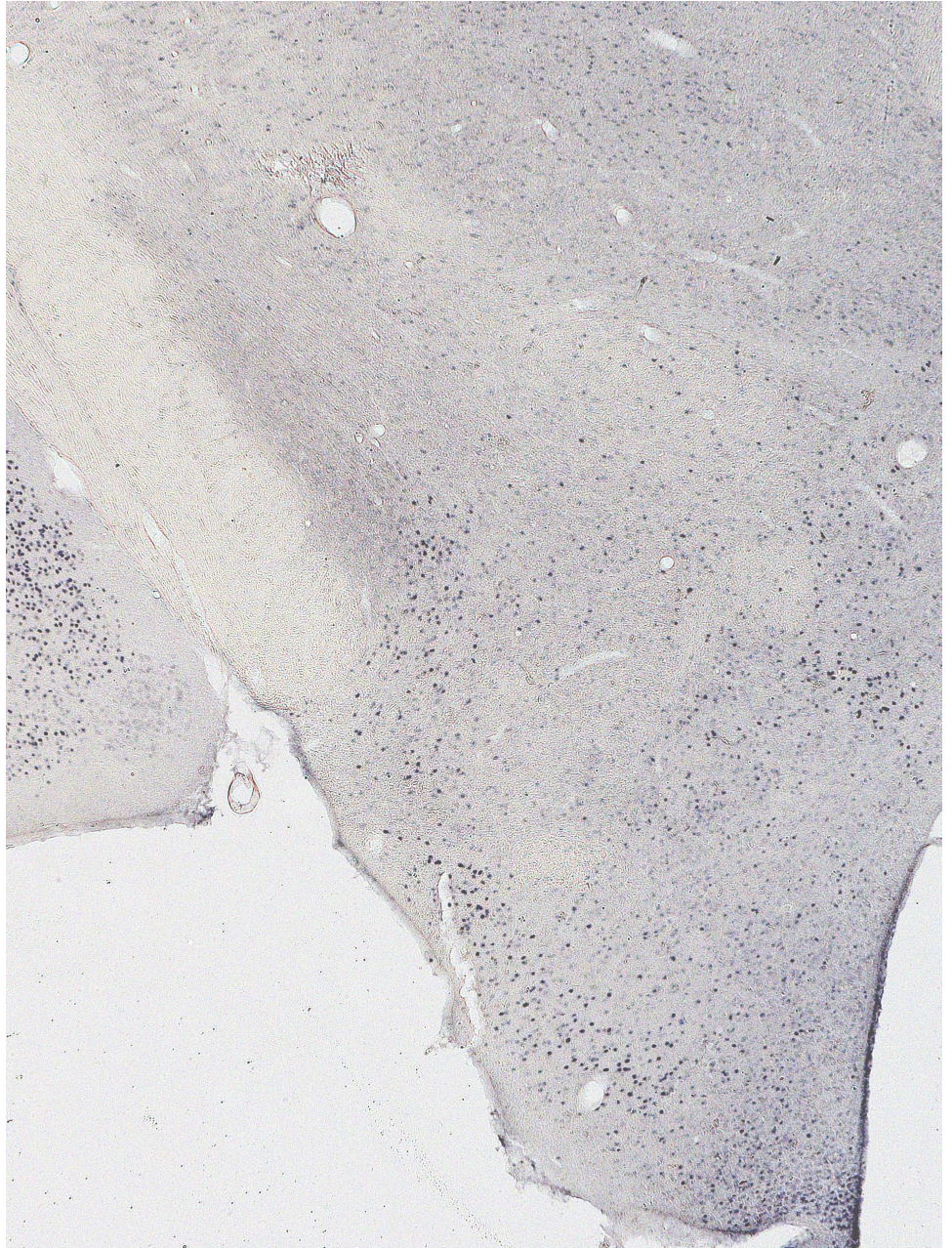
Expected from sequence similarity: Human, Mouse, Rat, Dog, Pig, Cow



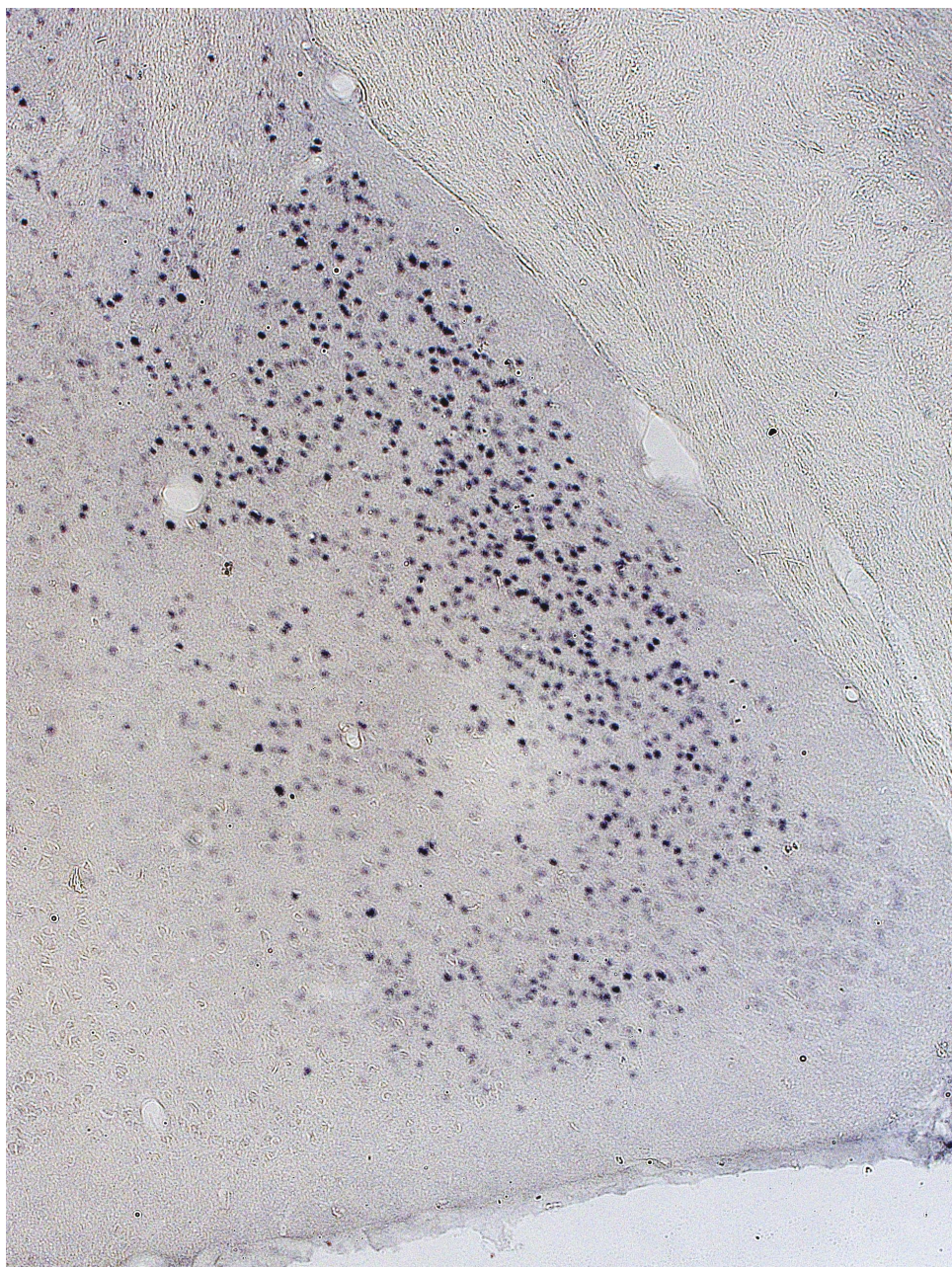
EB06441 (0.5µg/ml) staining of Human Cerebellum (A) and (0.1ug/ml) negative control Pancreas (B) lysate (35µg protein in RIPA buffer). Detected by chemiluminescence.



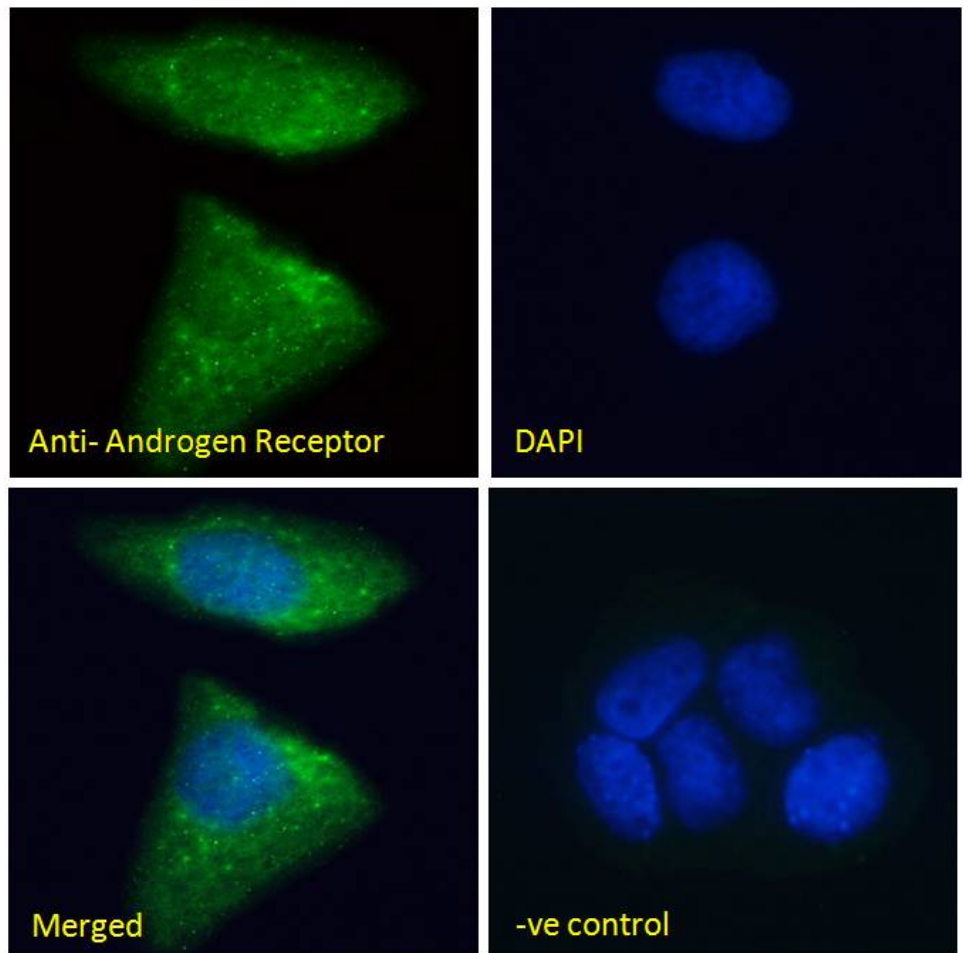
EB06441 (2µg/ml) staining of paraffin embedded Human Prostate. Steamed antigen retrieval with citrate buffer pH 6, AP-staining.



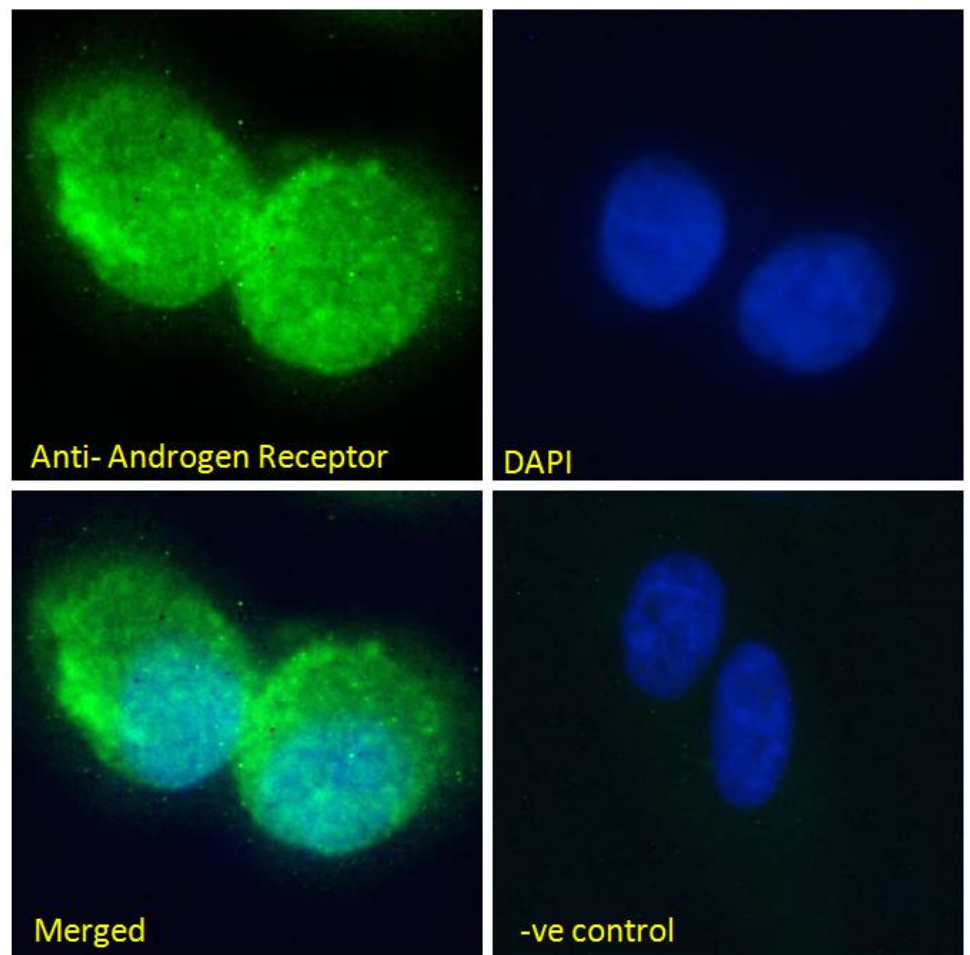
EB06441 Immunostaining of 25µm thick cryosections of PFA-perfused Mouse Hypothalamus, antigen retrieval with citrate buffer Ph 6 at 80C for 30 min, HRP-staining with Ni-DAB after Biotin-SP-antigoat amplification. Data obtained by Drs. Szabolcs Takács and Erik Hrabovszky, Inst, Exp, Med, Budapest, Hungary.



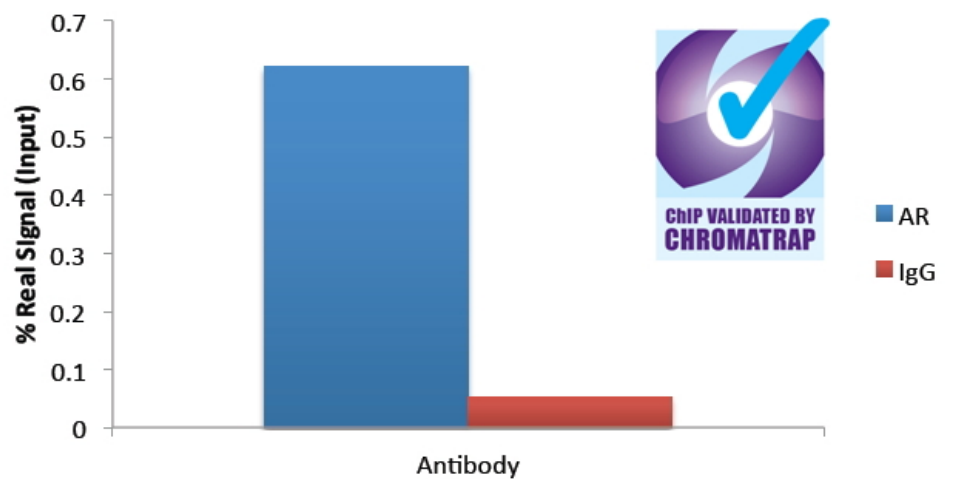
EB06441 Immunostaining of 25µm thick cryosections of PFA-perfused Mouse Amygdala, antigen retrieval with citrate buffer Ph 6 at 80C for 30 min, HRP-staining with Ni-DAB after Biotin-SP-antigoat amplification. Data obtained by Drs. Szabolcs Takács and Erik Hrabovszky, Inst, Exp, Med, Budapest, Hungary.



EB06441 Immunofluorescence analysis of paraformaldehyde fixed MCF7 cells, permeabilized with 0.15% Triton. Primary incubation 1hr (10ug/ml) followed by Alexa Fluor 488 secondary antibody (2ug/ml), showing Mitochondrial/cytoplasmic staining. The nuclear stain is DAPI (blue). Negative control: Unimmunized goat IgG (10ug/ml) followed by Alexa Fluor 488 secondary antibody (2ug/ml).



EB06441 Immunofluorescence analysis of paraformaldehyde fixed U2OS cells, permeabilized with 0.15% Triton. Primary incubation 1hr (10ug/ml) followed by Alexa Fluor 488 secondary antibody (2ug/ml), showing Mitochondrial/cytoplasmic staining. The nuclear stain is DAPI (blue). Negative control: Unimmunized goat IgG (10ug/ml) followed by Alexa Fluor 488 secondary antibody (2ug/ml).



ChIP of 2ug EB06441 with 1ug DHT-treated HEC50 chromatin using the Chromatrap® spin column sonication kit (Protein G) measuring FKBP5 enrichment.