



UK Office

Everest Biotech Ltd
Cherwell Innovation Centre
77 Heyford Park
Upper Heyford
Oxfordshire
OX25 5HD
UK

Enquiries:

info@everestbiotech.com

Sales:

sales@everestbiotech.com

Tech support:

support@everestbiotech.com

Tel: +44 (0)1869 238326

www.everestbiotech.com

**Research Use Only. Not for
diagnostic or therapeutic use.**

EB05308 - Goat Anti-Annexin A10 / Annexin 14 Antibody

Size: 100µg specific antibody in 200µl



Target Protein

Principal Names: ANXA10, annexin A10, ANX14, annexin 14

Official Symbol: ANXA10

Accession Number(s): NP_009124.2

Human GeneID(s): [11199](#)

Immunogen

Peptide with sequence FCGDYVQGTIFPAPN, from the N Terminus of the protein sequence according to NP_009124.2.

Please note the [peptide](#) is available for sale.

Purification and Storage

Purified from goat serum by ammonium sulphate precipitation followed by antigen affinity chromatography using the immunizing peptide.

Supplied at 0.5 mg/ml in Tris saline, 0.02% sodium azide, pH7.3 with 0.5% bovine serum albumin.

Aliquot and store at -20°C. Minimize freezing and thawing.

Applications Tested

Peptide ELISA: antibody detection limit dilution 1:8000.

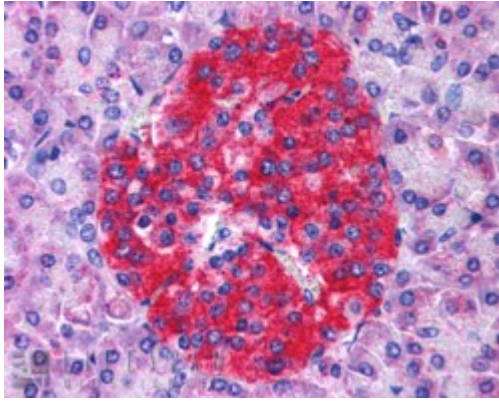
Western blot: Preliminary experiments (at 1ug/ml) gave an approx 45-48kDa band in Hela, A431 and Human Kidney lysates. Please note that currently we cannot find an explanation in the literature for the band we observe given the predicted size of approx. 37kDa according to NP_009124. We would appreciate any feedback from people in the field - have any results been reported with other antibodies/lysates? Have any further splice variants/modified forms been reported?

IHC: In paraffin embedded Human Pancreas shows staining of islet of Langerhans . Recommended concentration, 3-5µg/ml.

Species Reactivity

Tested: Human

Expected from sequence similarity: Human, Mouse, Rat, Cow



EB05308 (3.8 μ g/ml) staining of paraffin embedded Human Pancreas. Steamed antigen retrieval with citrate buffer pH 6, AP-staining.