



UK Office

Everest Biotech Ltd

Cherwell Innovation Centre
77 Heyford Park
Upper Heyford
Oxfordshire
OX25 5HD
UK

Enquiries:

info@everestbiotech.com

Sales:

sales@everestbiotech.com

Tech support:

support@everestbiotech.com

Tel: +44 (0)1869 238326

www.everestbiotech.com

**Research Use Only. Not for
diagnostic or therapeutic use.**

EB09970 - Goat Anti-ANTXR2 / CMG2 Antibody

Size: 100µg specific antibody in 200µl



Target Protein

Principal Names: anthrax toxin receptor 2, capillary morphogenesis protein 2, CMG2, CMG-2, FLJ31074, ISH, JHF, MGC111533, MGC45856, ANTXR2

Official Symbol: ANTXR2

Accession Number(s): NP_477520.2; NP_001139266.1

Human GeneID(s): [118429](#)

Important Comments: This antibody is expected to recognize both reported isoforms (NP_477520.2; NP_001139266.1).

Immunogen

Peptide with sequence C-HEGLKLANEQIQK, from the internal region of the protein sequence according to NP_477520.2; NP_001139266.1.

Please note the [peptide](#) is available for sale.

Purification and Storage

Purified from goat serum by ammonium sulphate precipitation followed by antigen affinity chromatography using the immunizing peptide.

Supplied at 0.5 mg/ml in Tris saline, 0.02% sodium azide, pH7.3 with 0.5% bovine serum albumin.

Aliquot and store at -20°C. Minimize freezing and thawing.

Applications Tested

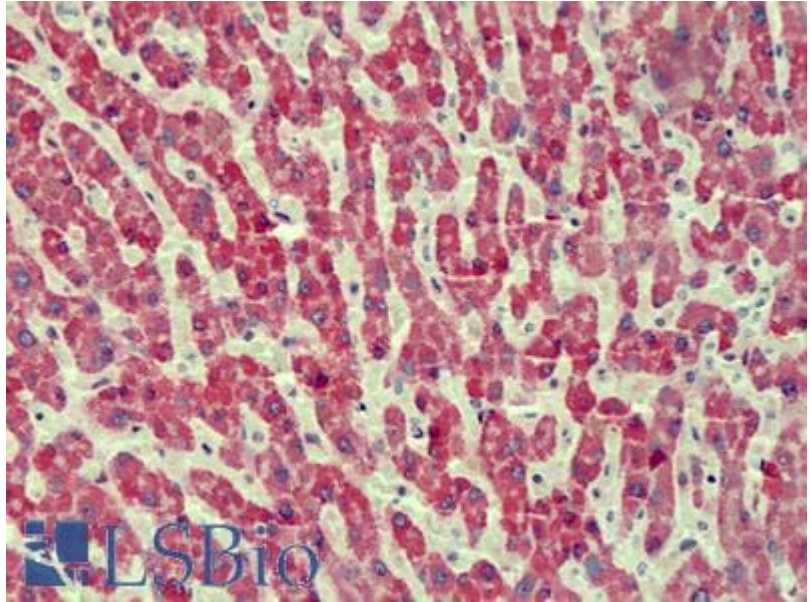
Peptide ELISA: antibody detection limit dilution 1:16000.

IHC: Paraffin embedded Human Liver and Kidney. Recommended concentration: 2.5µg/ml.

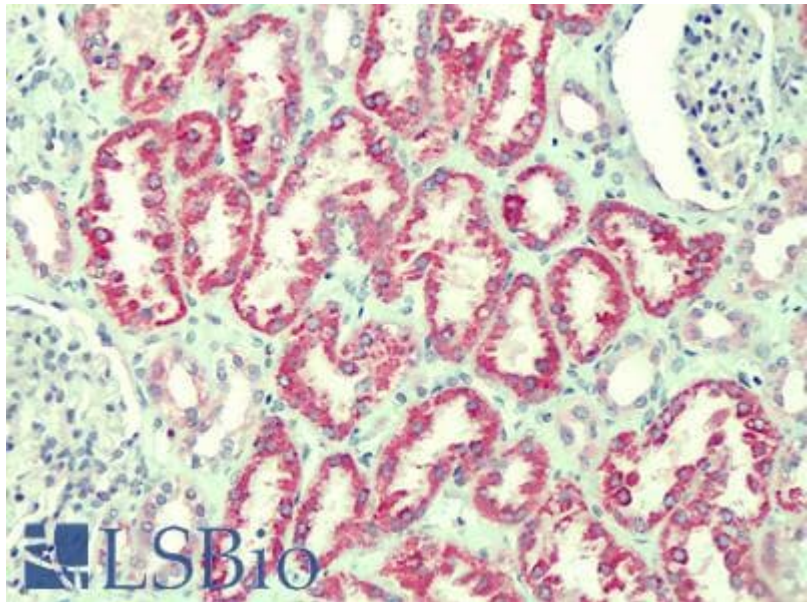
Species Reactivity

Tested: Human

Expected from sequence similarity: Human, Mouse, Rat, Dog, Cow



EB09970 (2.5µg/ml) staining of paraffin embedded Human Liver. Steamed antigen retrieval with citrate buffer pH 6, AP-staining.



EB09970 (2.5µg/ml) staining of paraffin embedded Human Kidney. Steamed antigen retrieval with citrate buffer pH 6, AP-staining.