

## International Office

### Everest Biotech Ltd

Vector Laboratories, Inc.  
6737 Mowry Ave  
Newark, CA 94560  
United States

Customer Service:

[customerservice@vectorlabs.com](mailto:customerservice@vectorlabs.com)

Technical Service:

[technical@vectorlabs.com](mailto:technical@vectorlabs.com)

Tel: +1 (800) 227-6666

[www.everestbiotech.com](http://www.everestbiotech.com)

**Research Use Only. Not for  
diagnostic or therapeutic use.**

## EB09865 - Goat Anti-AOC3 / VAP1 Antibody

Size: 100µg specific antibody in 200µl



### Target Protein

**Principal Names:** amine oxidase, copper containing 3, amine oxidase, copper containing 3 (vascular adhesion protein 1), copper amine oxidase, HPAO, semicarbazide-sensitive amine oxidase, SSAO, VAP1, VAP-1, vascular adhesion protein 1, AOC3

**Official Symbol:** AOC3

**Accession Number(s):** NP\_003725.1

**Human GeneID(s):** [8639](#)

### Immunogen

Peptide with sequence ESQAPKTIRDAFC, from the internal region of the protein sequence according to NP\_003725.1.

Please note the [peptide](#) is available for sale.

### Purification and Storage

Purified from goat serum by ammonium sulphate precipitation followed by antigen affinity chromatography using the immunizing peptide.

Supplied at 0.5 mg/ml in Tris saline, 0.02% sodium azide, pH7.3 with 0.5% bovine serum albumin.

Aliquot and store at -20°C. Minimize freezing and thawing.

### Applications Tested

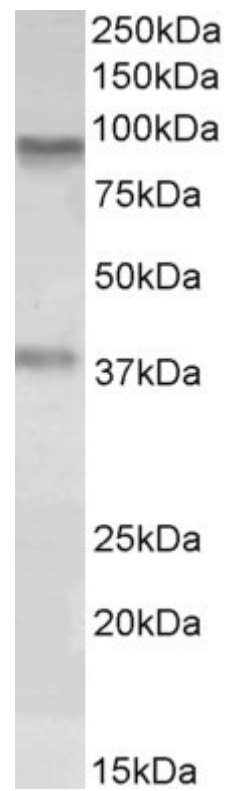
**Peptide ELISA:** antibody detection limit dilution 1:128000.

**Western blot:** Approx 90kDa band observed in lysates of cell line A549 (calculated MW of 84.6kDa according to NP\_003725.1). Recommended concentration: 0.1-0.3µg/ml. An additional band of unknown identity was also consistently observed at 38kDa. This band was successfully blocked by incubation with the immunizing peptide.

### Species Reactivity

**Tested:** Human

**Expected from sequence similarity:** Human, Mouse, Rat



EB09865 (0.1 $\mu$ g/ml) staining of A549 lysate (35 $\mu$ g protein in RIPA buffer). Primary incubation was 1 hour.  
Detected by chemiluminescence.