



International Office

Everest Biotech Ltd

Vector Laboratories, Inc.
6737 Mowry Ave
Newark, CA 94560
United States

Customer Service:

customerservice@vectorlabs.com

Technical Service:

technical@vectorlabs.com

Tel: +1 (800) 227-6666

www.everestbiotech.com

**Research Use Only. Not for
diagnostic or therapeutic use.**

EB08588 - Goat Anti-AOF2 / LSD1 Antibody

Size: 100µg specific antibody in 200µl



Target Protein

Principal Names: AOF2, amine oxidase (flavin containing) domain 2, BHC110, KDM1, KIAA0601, LSD1, BRAF35-HDAC complex protein BHC110, FAD-binding protein BRAF35-HDAC complex, 110 kDa subunit, lysine (K)-specific demethylase 1, lysine-specific histone demethylase 1

Official Symbol: AOF2

Accession Number(s): NP_055828.2

Human GeneID(s): [23028](#)

Immunogen

Peptide with sequence C-KHWDQDDDFEFTGSH, from the internal region of the protein sequence according to NP_055828.2.

Please note the [peptide](#) is available for sale.

Purification and Storage

Purified from goat serum by ammonium sulphate precipitation followed by antigen affinity chromatography using the immunizing peptide.

Supplied at 0.5 mg/ml in Tris saline, 0.02% sodium azide, pH7.3 with 0.5% bovine serum albumin.

Aliquot and store at -20°C. Minimize freezing and thawing.

Applications Tested

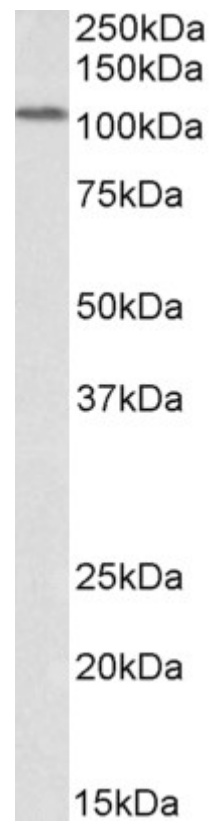
Peptide ELISA: antibody detection limit dilution 1:16000.

Western blot: Approx 110kDa band observed in Human Kidney lysate (calculated MW of 92.9kDa according to NP_055828.2). Recommended concentration: 0.5-1.5µg/ml.

Species Reactivity

Tested: Human

Expected from sequence similarity: Human, Mouse, Rat, Dog, Cow, Pig



EB08588 (0.5µg/ml) staining of Human Kidney lysate (35µg protein in RIPA buffer). Primary incubation was 1 hour. Detected by chemiluminescence.