

International Office

Everest Biotech Ltd

Vector Laboratories, Inc.
6737 Mowry Ave
Newark, CA 94560
United States

Customer Service:

customerservice@vectorlabs.com

Technical Service:

technical@vectorlabs.com

Tel: +1 (800) 227-6666

www.everestbiotech.com

**Research Use Only. Not for
diagnostic or therapeutic use.**

EB11875 - Goat Anti-AP2A1 (aa706-727) Antibody

Size: 100µg specific antibody in 200µl



Target Protein

Principal Names: AP2A1, adaptor-related protein complex 2, alpha 1 subunit, ADTAA, AP2-ALPHA, CLAPA1, 100 kDa coated vesicle protein A, AP-2 complex subunit alpha-1, adapter-related protein complex 2 alpha-1 subunit, adaptin, alpha A, adaptor protein complex AP-2 subunit alpha-1, alpha-adaptin A, alpha1-adaptin, clathrin assembly protein complex 2 alpha-A large chain, clathrin-associated/assembly/adaptor protein, large, alpha 1, plasma membrane adaptor HA2/AP2 adaptin alpha A subunit

Official Symbol: AP2A1

Accession Number(s): NP_055018.2

Human GeneID(s): [160](#)

Non-Human GeneID(s): 11771 (mouse), 308578 (rat)

Important Comments: This antibody is expected to recognize reported isoform 1 (NP_055018.2) only.

Immunogen

Peptide with sequence C-ELEPPAPESPMALLADPAPAAD, from the internal region of the protein sequence according to NP_055018.2.

Please note the [peptide](#) is available for sale.

Purification and Storage

Purified from goat serum by ammonium sulphate precipitation followed by antigen affinity chromatography using the immunizing peptide.

Supplied at 0.5 mg/ml in Tris saline, 0.02% sodium azide, pH7.3 with 0.5% bovine serum albumin.

Aliquot and store at -20°C. Minimize freezing and thawing.

Applications Tested

Peptide ELISA: antibody detection limit dilution 1:128000.

Western blot: Approx 110kDa band observed in Human Brain (Frontal cortex) lysates (calculated MW of 108kDa according to NP_055018.2). Recommended concentration: 0.03-0.1µg/ml. Primary incubation was 1 hour.

IHC: Paraffin embedded Human Brain (Cerebellum). Recommended concentration: 5-7µg/ml.

Species Reactivity

Tested: Human

Expected from sequence similarity: Human, Mouse, Rat, Pig, Cow

Specific References

This antibody (previous batch) has been successfully used in IF on Human:

Dominik P Buser, Gaétan Bader, Martin Spiess

Retrograde transport of CDMPR depends on several machineries as analyzed by sulfatable nanobodies.

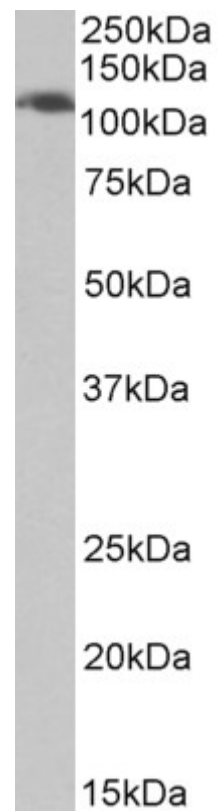
Life Sci Alliance. 2022 Jul; 5(7): e202101269.

PMID: 35314489

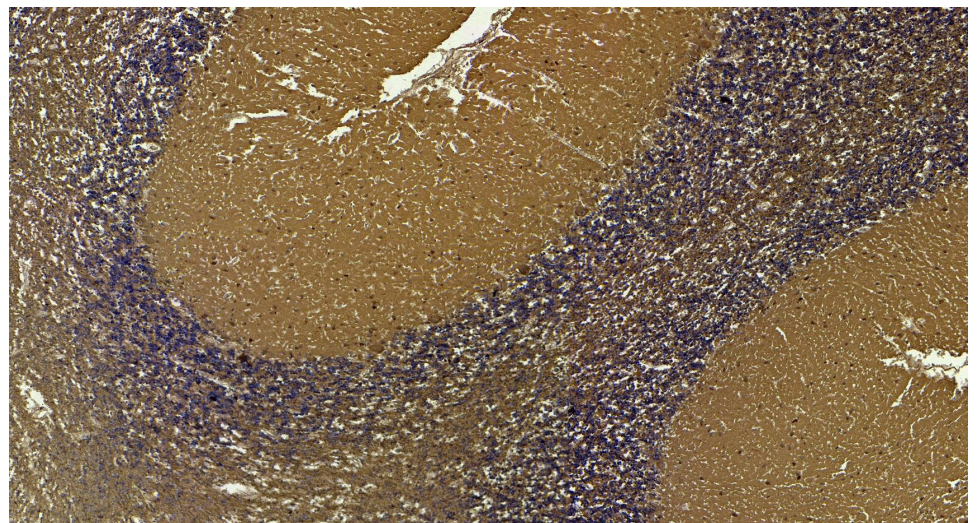
This antibody (previous batch) has been successfully used in Western blot on Human:

Dominik Pascal Buser, Marie-Françoise Ritz, Suzette Moes; Cristobal Tostado, Stephan

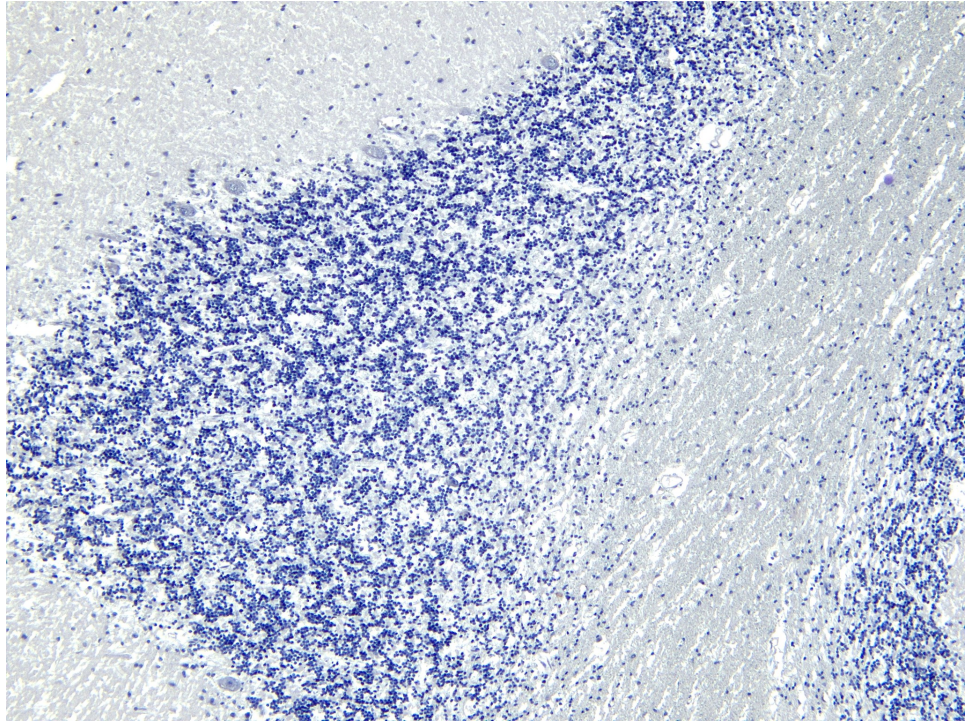
Frank, Martin Spiess, Luigi Mariani, Paul Jenö, Jean-Louis Boulay, Gregor Hutter
Quantitative proteomics reveals reduction of endocytic machinery components in gliomas
<https://doi.org/10.1016/j.ebiom.2019.07.039>
PMID: 31331834



EB11875 (0.03 μ g/ml) staining of Human Frontal cortex lysate (35 μ g protein in RIPA buffer). Detected by chemiluminescence.



EB11875 (7 μ g/ml) staining of paraffin embedded Human Cerebellum. Heat induced antigen retrieval with citrate buffer pH 6, HRP-staining.



EB11875 Negative Control showing staining of paraffin embedded Human Cerebellum, with no primary antibody.