

## UK Office

### Everest Biotech Ltd

Cherwell Innovation Centre  
77 Heyford Park  
Upper Heyford  
Oxfordshire  
OX25 5HD  
UK

Enquiries:

[info@everestbiotech.com](mailto:info@everestbiotech.com)

Sales:

[sales@everestbiotech.com](mailto:sales@everestbiotech.com)

Tech support:

[support@everestbiotech.com](mailto:support@everestbiotech.com)

Tel: +44 (0)1869 238326

[www.everestbiotech.com](http://www.everestbiotech.com)

**Research Use Only. Not for  
diagnostic or therapeutic use.**

## EB07860 - Goat Anti-APH1A Antibody

Size: 100µg specific antibody in 200µl



### Target Protein

**Principal Names:** APH1A, anterior pharynx defective 1 homolog A (C. elegans), 6530402N02Rik, APH-1A, CGI-78, anterior pharynx defective 1 homolog A

**Official Symbol:** APH1A

**Accession Number(s):** NP\_001071096.1; NP\_057106.2

**Human GeneID(s):** [51107](#)

**Important Comments:** This antibody is expected to recognize isoform 1 (NP\_001071096.1) and isoform 2 (NP\_057106.2).

### Immunogen

Peptide with sequence C-HVTDRSDARLQYG, from the internal region of the protein sequence according to NP\_001071096.1; NP\_057106.2.

Please note the [peptide](#) is available for sale.

### Purification and Storage

Purified from goat serum by ammonium sulphate precipitation followed by antigen affinity chromatography using the immunizing peptide.

Supplied at 0.5 mg/ml in Tris saline, 0.02% sodium azide, pH7.3 with 0.5% bovine serum albumin.

Aliquot and store at -20°C. Minimize freezing and thawing.

### Applications Tested

**Peptide ELISA:** antibody detection limit dilution 1:128000.

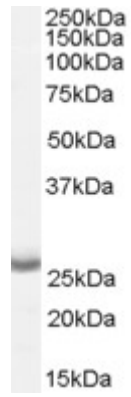
**Western blot:** Approx 26kDa band observed in Human Brain (Cerebral Cortex) lysates (calculated MW of 26.8kDa according to NP\_057106.2). Recommended concentration: 0.05-0.1µg/ml. Primary incubation was 1 hour.

**IHC:** Paraffin embedded Human Placenta and Kidney. Recommended concentration: 5µg/ml.

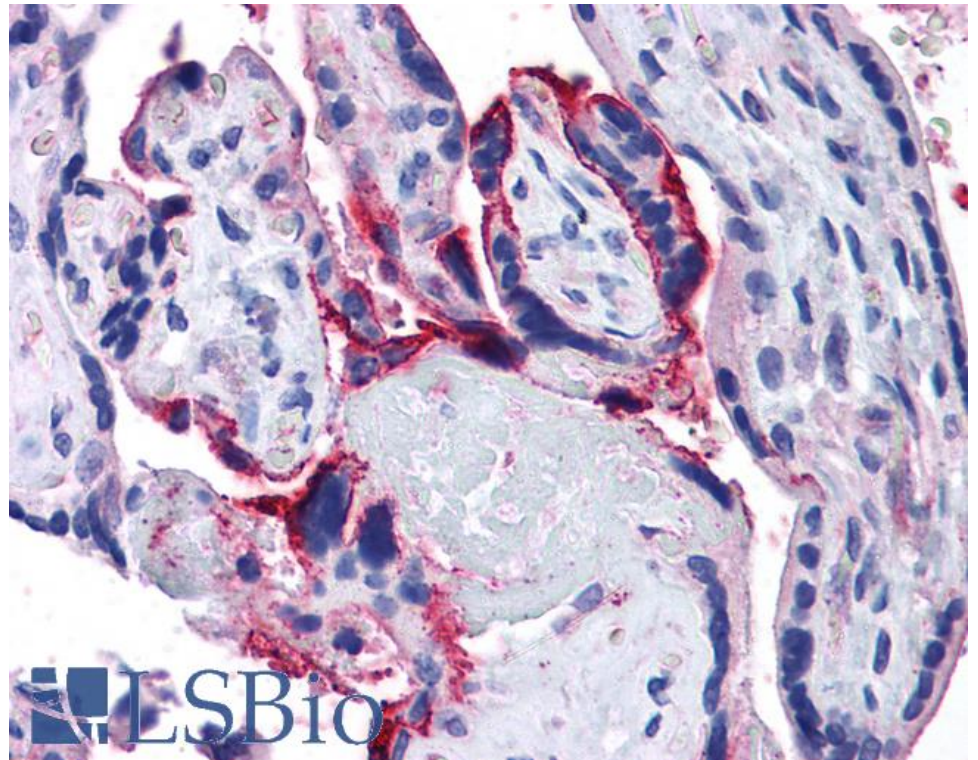
### Species Reactivity

**Tested:** Human

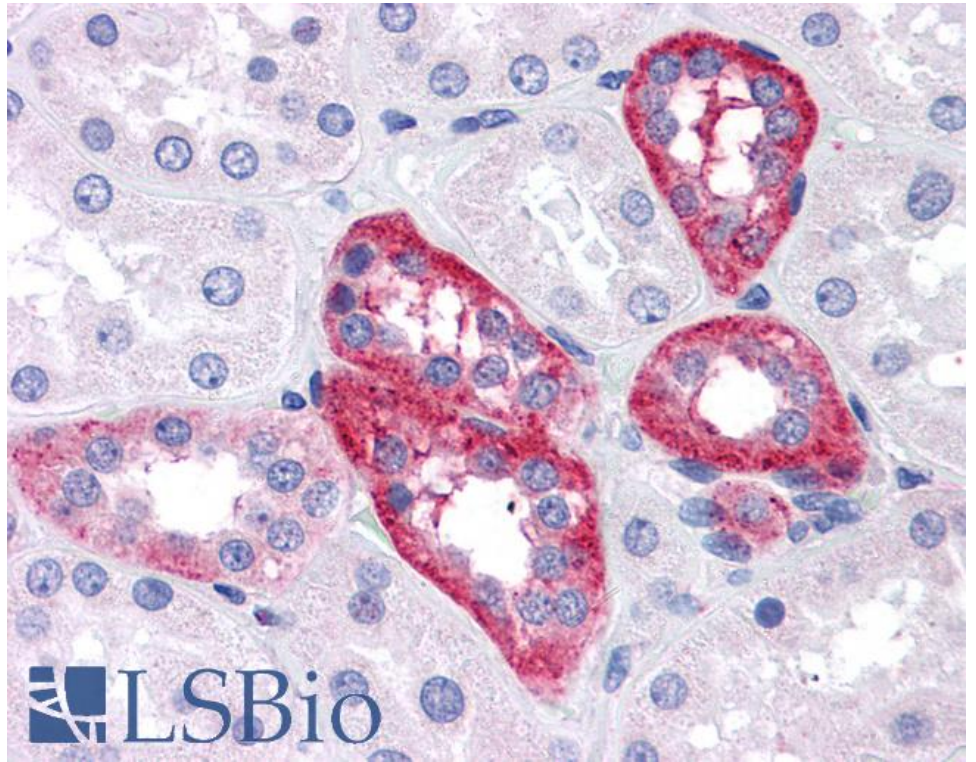
**Expected from sequence similarity:** Human, Mouse, Rat, Dog, Pig, Cow



EB07860 (0.05 $\mu$ g/ml) staining of Human Brain (Cerebral Cortex) lysate (35 $\mu$ g protein in RIPA buffer). Detected by chemiluminescence.



EB07860 (5 $\mu$ g/ml) staining of paraffin embedded Human Placenta. Steamed antigen retrieval with citrate buffer pH 6, AP-staining.



EB07860 (5µg/ml) staining of paraffin embedded Human Kidney. Steamed antigen retrieval with citrate buffer pH 6, AP-staining.