



UK Office

Everest Biotech Ltd

Cherwell Innovation Centre
77 Heyford Park
Upper Heyford
Oxfordshire
OX25 5HD
UK

Enquiries:

info@everestbiotech.com

Sales:

sales@everestbiotech.com

Tech support:

support@everestbiotech.com

Tel: +44 (0)1869 238326

Fax: +44 (0)1869 238327

US Office

Everest Biotech c/o Abcore

405 Maple Street, Suite A106
Ramona,
CA 92065
USA

Inquiries:

info@everestbiotech.com

Sales:

usasales@everestbiotech.com

Tech support:

support@everestbiotech.com

Tel: 888-320-4628 (toll-free)

Fax: 888-841-9041

www.everestbiotech.com

**Research Use Only. Not for
diagnostic or therapeutic use.**

EB07860 - Goat Anti-APH1A Antibody

Size: 100µg specific antibody in 200µl



Target Protein

Principal Names: APH1A, anterior pharynx defective 1 homolog A (C. elegans), 6530402N02Rik, APH-1A, CGI-78, anterior pharynx defective 1 homolog A

Official Symbol: APH1A

Accession Number(s): NP_001071096.1; NP_057106.2

Human GeneID(s): [51107](#)

Important Comments: This antibody is expected to recognize isoform 1 (NP_001071096.1) and isoform 2 (NP_057106.2).

Immunogen

Peptide with sequence C-HVTDRSDARLQYG, from the internal region of the protein sequence according to NP_001071096.1; NP_057106.2.

Please note the [peptide](#) is available for sale.

Purification and Storage

Purified from goat serum by ammonium sulphate precipitation followed by antigen affinity chromatography using the immunizing peptide.

Supplied at 0.5 mg/ml in Tris saline, 0.02% sodium azide, pH7.3 with 0.5% bovine serum albumin.

Aliquot and store at -20°C. Minimize freezing and thawing.

Applications Tested

Peptide ELISA: antibody detection limit dilution 1:128000.

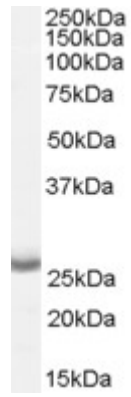
Western blot: Approx 26kDa band observed in Human Brain (Cerebral Cortex) lysates (calculated MW of 26.8kDa according to NP_057106.2). Recommended concentration: 0.05-0.1µg/ml. Primary incubation was 1 hour.

IHC: Paraffin embedded Human Placenta and Kidney. Recommended concentration: 5µg/ml.

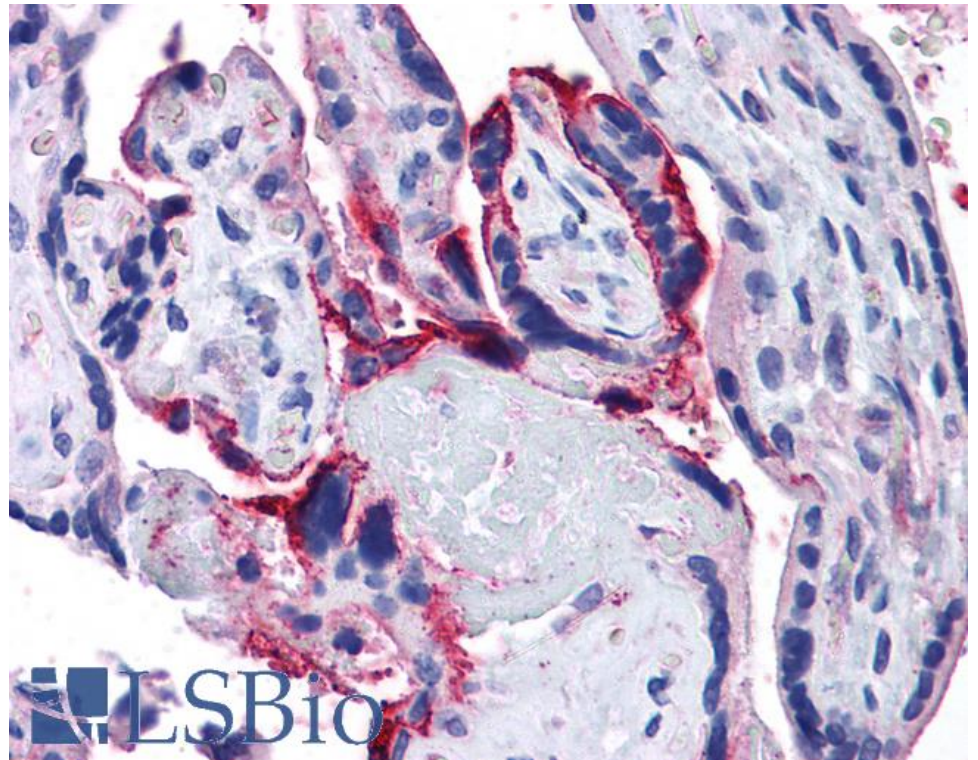
Species Reactivity

Tested: Human

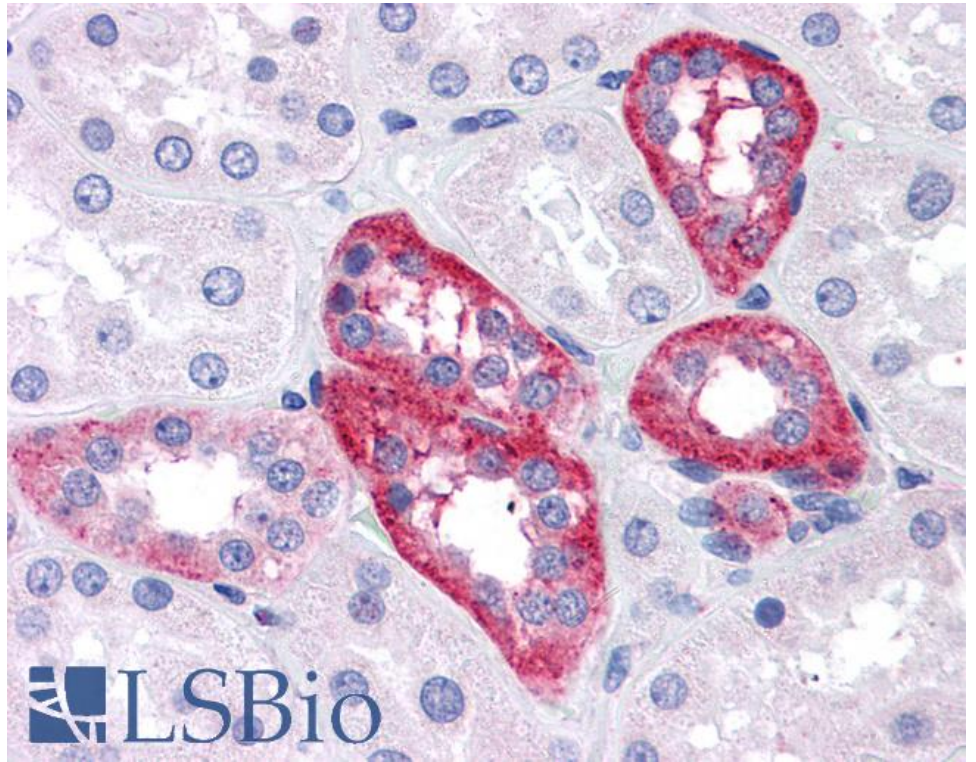
Expected from sequence similarity: Human, Mouse, Rat, Dog, Pig, Cow



EB07860 (0.05 μ g/ml) staining of Human Brain (Cerebral Cortex) lysate (35 μ g protein in RIPA buffer). Detected by chemiluminescence.



EB07860 (5 μ g/ml) staining of paraffin embedded Human Placenta. Steamed antigen retrieval with citrate buffer pH 6, AP-staining.



EB07860 (5µg/ml) staining of paraffin embedded Human Kidney. Steamed antigen retrieval with citrate buffer pH 6, AP-staining.