



International Office

Everest Biotech Ltd

Vector Laboratories, Inc.
6737 Mowry Ave
Newark, CA 94560
United States

Customer Service:

customerservice@vectorlabs.com

Technical Service:

technical@vectorlabs.com

Tel: +1 (800) 227-6666

www.everestbiotech.com

**Research Use Only. Not for
diagnostic or therapeutic use.**

EB08747 - Goat Anti-APOA1BP Antibody

Size: 100µg specific antibody in 200µl



Target Protein

Principal Names: APOA1BP, apolipoprotein A-I binding protein, AIBP, MGC119143, MGC119144, MGC119145, apoA-I binding protein

Official Symbol: NAXE

Accession Number(s): NP_658985.2

Human GeneID(s): [128240](#)

Non-Human GeneID(s): 246703 (mouse), 295229 (rat)

Immunogen

Peptide with sequence PPYPDTECVYRLQ, from the C Terminus of the protein sequence according to NP_658985.2.

Please note the [peptide](#) is available for sale.

Purification and Storage

Purified from goat serum by ammonium sulphate precipitation followed by antigen affinity chromatography using the immunizing peptide.

Supplied at 0.5 mg/ml in Tris saline, 0.02% sodium azide, pH7.3 with 0.5% bovine serum albumin.

Aliquot and store at -20°C. Minimize freezing and thawing.

Applications Tested

Peptide ELISA: antibody detection limit dilution 1:1000.

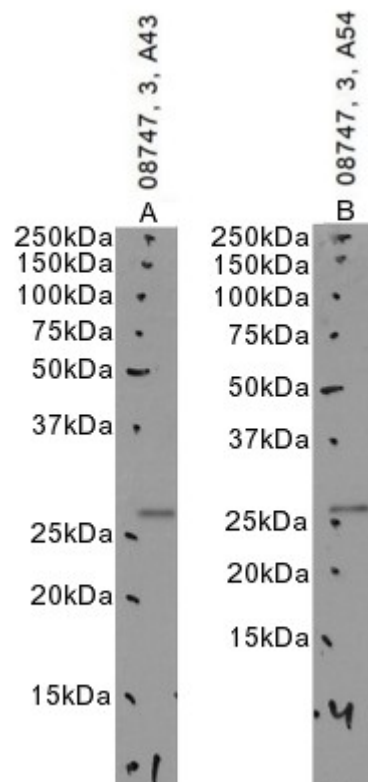
Western blot: Approx. 27kDa band observed in lysates of cell line A431, and approx. 26kDa in lysates of cell line A549 and in Human Heart lysates (calculated MW of 31.7kDa according to NP_658985.2). Recommended concentration: 3µg/ml. Primary incubation 1 hour at room temperature.

Flow Cytometry: Flow cytometric analysis of A549 cells. Recommended concentration: 10ug/ml.

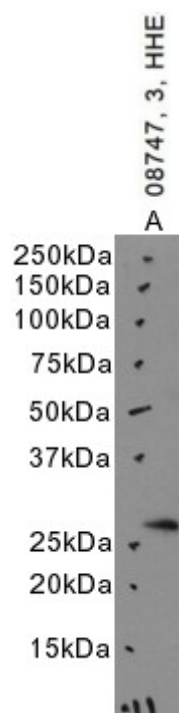
Species Reactivity

Tested: Human

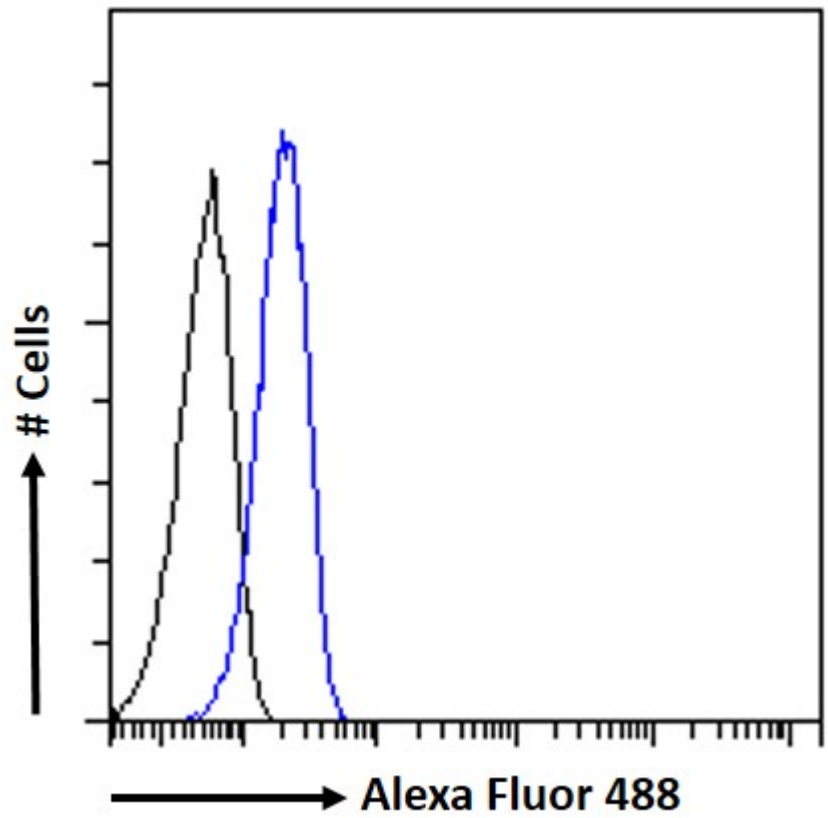
Expected from sequence similarity: Human, Cow



EB08747 optimised QC. Primary incubation 1 hour at room temperature.
 Images A, B: A431 and A549 cell lysate at primary Ab concentration 3ug/ml. (Loaded 35µg protein in RIPA buffer, per lane). Detected by chemiluminescence.



EB08747 optimised QC. Primary incubation 1 hour at room temperature.
 Image A: Human Heart lysate at primary Ab concentration 3ug/ml. (Loaded 35µg protein in RIPA buffer, per lane). Detected by chemiluminescence.



EB08747 Flow cytometric analysis of paraformaldehyde fixed A549 cells (blue line), permeabilized with 0.5% Triton. Primary incubation 1hr (10ug/ml) followed by Alexa Fluor 488 secondary antibody (1ug/ml). IgG control: Unimmunized goat IgG (black line) followed by Alexa Fluor 488 secondary antibody.