



## UK Office

### Everest Biotech Ltd

Cherwell Innovation Centre  
77 Heyford Park  
Upper Heyford  
Oxfordshire  
OX25 5HD  
UK

Enquiries:

[info@everestbiotech.com](mailto:info@everestbiotech.com)

Sales:

[sales@everestbiotech.com](mailto:sales@everestbiotech.com)

Tech support:

[support@everestbiotech.com](mailto:support@everestbiotech.com)

Tel: +44 (0)1869 238326

Fax: +44 (0)1869 238327

## US Office

### Everest Biotech c/o Abcore

405 Maple Street, Suite A106  
Ramona,  
CA 92065  
USA

Inquiries:

[info@everestbiotech.com](mailto:info@everestbiotech.com)

Sales:

[usasales@everestbiotech.com](mailto:usasales@everestbiotech.com)

Tech support:

[support@everestbiotech.com](mailto:support@everestbiotech.com)

Tel: 888-320-4628 (toll-free)

Fax: 888-841-9041

[www.everestbiotech.com](http://www.everestbiotech.com)

**Research Use Only. Not for  
diagnostic or therapeutic use.**

## EB07909 - Goat Anti-APOA5 Antibody

Size: 100µg specific antibody in 200µl



## Target Protein

**Principal Names:** APOA5, apolipoprotein A-V, APOA-V, APOAV, MGC126836, MGC126838, RAP3, apolipoprotein A5, apolipoprotein AV, regeneration-associated protein 3

**Official Symbol:** APOA5

**Accession Number(s):** NP\_443200.2

**Human GeneID(s):** [116519](#)

## Immunogen

Peptide with sequence C-HSLHDQGHSHLGDP, from the C Terminus of the protein sequence according to NP\_443200.2.

Please note the [peptide](#) is available for sale.

## Purification and Storage

Purified from goat serum by ammonium sulphate precipitation followed by antigen affinity chromatography using the immunizing peptide.

Supplied at 0.5 mg/ml in Tris saline, 0.02% sodium azide, pH7.3 with 0.5% bovine serum albumin.

Aliquot and store at -20°C. Minimize freezing and thawing.

## Applications Tested

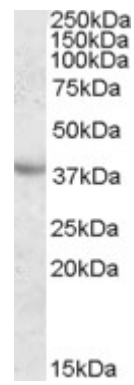
**Peptide ELISA:** antibody detection limit dilution 1:64000.

**Western blot:** Approx 38kDa band observed in Human Liver lysates (calculated MW of 41.2kDa according to NP\_443200.2). Recommended concentration: 0.3-1µg/ml.

## Species Reactivity

**Tested:** Human

**Expected from sequence similarity:** Human



EB07909 (0.3µg/ml) staining of Human Liver lysate (35µg protein in RIPA buffer). Primary incubation was 1 hour.  
Detected by chemiluminescence.