

UK Office

Everest Biotech Ltd

Cherwell Innovation Centre
77 Heyford Park
Upper Heyford
Oxfordshire
OX25 5HD
UK

Enquiries:

info@everestbiotech.com

Sales:

sales@everestbiotech.com

Tech support:

support@everestbiotech.com

Tel: +44 (0)1869 238326

www.everestbiotech.com

**Research Use Only. Not for
diagnostic or therapeutic use.**

EB08913 - Goat Anti-APOBEC1 Antibody

Size: 100µg specific antibody in 200µl



Target Protein

Principal Names: APOBEC1, apolipoprotein B mRNA editing enzyme, catalytic polypeptide 1, APOBEC-1, BEDP, CDAR1, HEPR, apolipoprotein B mRNA editing enzyme, apolipoprotein B mRNA editing enzyme complex-1

Official Symbol: APOBEC1

Accession Number(s): NP_001635.2

Human GeneID(s): [339](#)

Non-Human GeneID(s): 11810 (mouse)

Immunogen

Peptide with sequence DVFYDPRELRKEAC, from the internal region (near N Terminus) of the protein sequence according to NP_001635.2.

Please note the [peptide](#) is available for sale.

Purification and Storage

Purified from goat serum by ammonium sulphate precipitation followed by antigen affinity chromatography using the immunizing peptide.

Supplied at 0.5 mg/ml in Tris saline, 0.02% sodium azide, pH7.3 with 0.5% bovine serum albumin.

Aliquot and store at -20°C. Minimize freezing and thawing.

Applications Tested

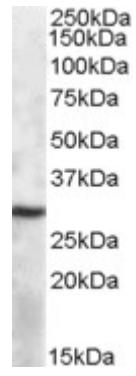
Peptide ELISA: antibody detection limit dilution 1:32000.

Western blot: Approx. 28kDa band observed in Mouse Spleen lysates (calculated MW of 28.2kDa according to Human NP_001635.2 and 27.5kDa according to Mouse NP_112436.1). Recommended concentration: 1-3µg/ml.

Species Reactivity

Tested: Mouse

Expected from sequence similarity: Human, Mouse



EB08913 (1 μ g/ml) staining of Mouse Spleen lysate (35 μ g protein in RIPA buffer). Primary incubation was 1 hour.
Detected by chemiluminescence.