



UK Office

Everest Biotech Ltd

Cherwell Innovation Centre
77 Heyford Park
Upper Heyford
Oxfordshire
OX25 5HD
UK

Enquiries:

info@everestbiotech.com

Sales:

sales@everestbiotech.com

Tech support:

support@everestbiotech.com

Tel: +44 (0)1869 238326

www.everestbiotech.com

**Research Use Only. Not for
diagnostic or therapeutic use.**

EB08444 - Goat Anti-APOBEC2 (aa180 - 190) Antibody

Size: 100µg specific antibody in 200µl



Target Protein

Principal Names: APOBEC2, apolipoprotein B mRNA editing enzyme, catalytic polypeptide-like 2, ARCD1, ARP1, OTTHUMP00000039773, apolipoprotein B mRNA editing enzyme, catalytic polypeptide 2

Official Symbol: APOBEC2

Accession Number(s): NP_006780.1

Human GeneID(s): [10930](#)

Non-Human GeneID(s): 11811 (mouse), 301226 (rat)

Immunogen

Peptide with sequence C-KPQDFEYVWQN, from the internal region of the protein sequence according to NP_006780.1.

Please note the [peptide](#) is available for sale.

Purification and Storage

Purified from goat serum by ammonium sulphate precipitation followed by antigen affinity chromatography using the immunizing peptide.

Supplied at 0.5 mg/ml in Tris saline, 0.02% sodium azide, pH7.3 with 0.5% bovine serum albumin.

Aliquot and store at -20°C. Minimize freezing and thawing.

Applications Tested

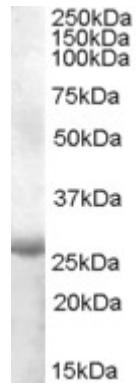
Peptide ELISA: antibody detection limit dilution 1:128000.

Western blot: Approx 26kDa band observed in Human Skeletal Muscle lysates (calculated MW of 25.7kDa according to NP_006780.1). Recommended concentration: 1-3µg/ml.

Species Reactivity

Tested: Human

Expected from sequence similarity: Human, Mouse, Rat, Cow



EB08444 (1 μ g/ml) staining of Human Muscle lysate (35 μ g protein in RIPA buffer). Primary incubation was 1 hour. Detected by chemiluminescence.