



UK Office

Everest Biotech Ltd

Cherwell Innovation Centre
77 Heyford Park
Upper Heyford
Oxfordshire
OX25 5HD
UK

Enquiries:

info@everestbiotech.com

Sales:

sales@everestbiotech.com

Tech support:

support@everestbiotech.com

Tel: +44 (0)1869 238326

Fax: +44 (0)1869 238327

US Office

Everest Biotech c/o Abcore

405 Maple Street, Suite A106
Ramona,
CA 92065
USA

Inquiries:

info@everestbiotech.com

Sales:

usasales@everestbiotech.com

Tech support:

support@everestbiotech.com

Tel: 888-320-4628 (toll-free)

Fax: 888-841-9041

www.everestbiotech.com

**Research Use Only. Not for
diagnostic or therapeutic use.**

EB07744 - Goat Anti-APOBEC3G Antibody

Size: 100µg specific antibody in 200µl



Target Protein

Principal Names: APOBEC3G, apolipoprotein B mRNA editing enzyme, catalytic polypeptide-like 3G, ARP9, CEM15, FLJ12740, MDS019, bK150C2.7, dJ494G10.1, DNA dC->dU editing enzyme, OTTHUMP00000028911, apolipoprotein B mRNA editing enzyme catalytic polypeptide-like 3G, phorbol-like protein MDS019

Official Symbol: APOBEC3G

Accession Number(s): NP_068594.1

Human GeneID(s): [60489](#)

Immunogen

Peptide with sequence C-DEHSQDLSGRLR, from the C Terminus of the protein sequence according to NP_068594.1.

Please note the [peptide](#) is available for sale.

Purification and Storage

Purified from goat serum by ammonium sulphate precipitation followed by antigen affinity chromatography using the immunizing peptide.

Supplied at 0.5 mg/ml in Tris saline, 0.02% sodium azide, pH7.3 with 0.5% bovine serum albumin.

Aliquot and store at -20°C. Minimize freezing and thawing.

Applications Tested

Peptide ELISA: antibody detection limit dilution 1:16000.

Western blot: Approx. 45kDa band observed in lysates of cell line Daudi (calculated MW of 46.4kDa according to NP_068594.1). Recommended concentration: 0.5-1.5µg/ml. Primary incubation was 1 hour.

IHC: Paraffin embedded Human Testis and Kidney. Recommended concentration: 2.5µg/ml.

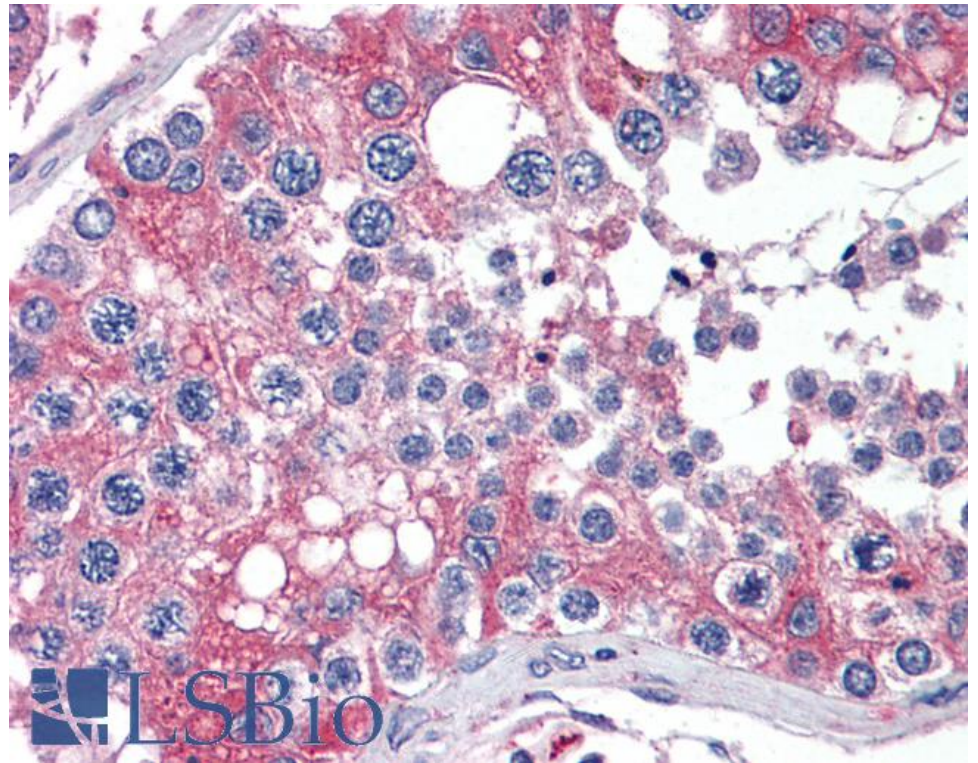
Species Reactivity

Tested: Human

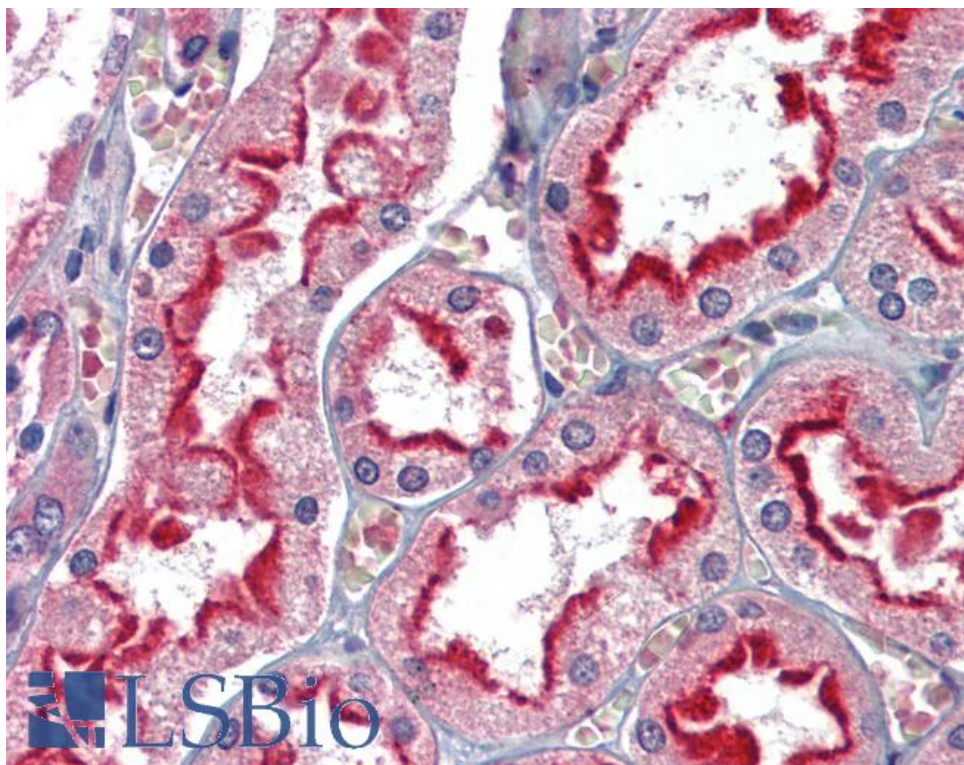
Expected from sequence similarity: Human

250kDa
150kDa
100kDa
75kDa
50kDa
37kDa
25kDa
20kDa
15kDa

EB7744 (0.5µg/ml) staining of Daudi lysate (35µg protein in RIPA buffer). Detected by chemiluminescence.



EB07744 (2.5µg/ml) staining of paraffin embedded Human Testis. Steamed antigen retrieval with citrate buffer pH 6, AP-staining.



EB07744 (2.5µg/ml) staining of paraffin embedded Human Kidney. Steamed antigen retrieval with citrate buffer pH 6, AP-staining.