

## UK Office

### Everest Biotech Ltd

Cherwell Innovation Centre  
77 Heyford Park  
Upper Heyford  
Oxfordshire  
OX25 5HD  
UK

Enquiries:

[info@everestbiotech.com](mailto:info@everestbiotech.com)

Sales:

[sales@everestbiotech.com](mailto:sales@everestbiotech.com)

Tech support:

[support@everestbiotech.com](mailto:support@everestbiotech.com)

Tel: +44 (0)1869 238326

[www.everestbiotech.com](http://www.everestbiotech.com)

**Research Use Only. Not for  
diagnostic or therapeutic use.**

## EB06714 - Goat Anti-APOBEC3G / ARP9 Antibody

Size: 100µg specific antibody in 200µl



### Target Protein

**Principal Names:** APOBEC3G, apolipoprotein B mRNA editing enzyme, catalytic polypeptide-like 3G, HGNC:17357, ARP9, CEM15, FLJ12740, MDS019, OTTHUMP00000028911, bK150C2.7, dJ494G10.1, DNA dC->dU editing enzyme, phorbolin-like protein MDS019

**Official Symbol:** APOBEC3G

**Accession Number(s):** NP\_068594.1

**Human GeneID(s):** [60489](#)

### Immunogen

Peptide with sequence C-SKWRKLHRDQE, from the internal region of the protein sequence according to NP\_068594.1.

Please note the [peptide](#) is available for sale.

### Purification and Storage

Purified from goat serum by ammonium sulphate precipitation followed by antigen affinity chromatography using the immunizing peptide.

Supplied at 0.5 mg/ml in Tris saline, 0.02% sodium azide, pH7.3 with 0.5% bovine serum albumin.

Aliquot and store at -20°C. Minimize freezing and thawing.

### Applications Tested

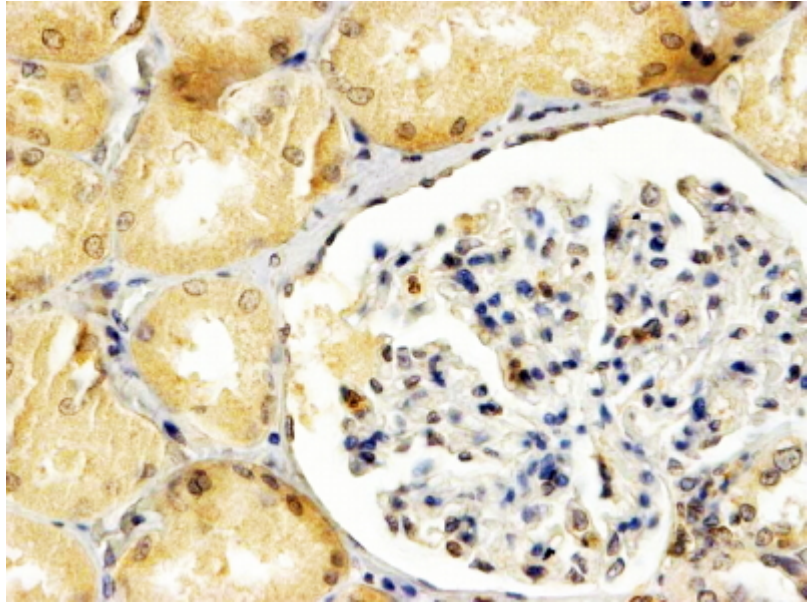
**Peptide ELISA:** antibody detection limit dilution 1:64000.

**IHC:** In paraffin embedded Human Kidney shows weak cytoplasm staining and stronger nuclear staining in a selection of glomerular cells. Also nuclear membrane staining elsewhere. Recommended concentration, 1-2µg/ml.

### Species Reactivity

**Tested:** Human

**Expected from sequence similarity:** Human



EB06714 (4 $\mu$ g/ml) staining of paraffin embedded Human Kidney. Steamed antigen retrieval with Tris/EDTA buffer pH 9, HRP-staining.