



International Office

Everest Biotech Ltd

Vector Laboratories, Inc.
6737 Mowry Ave
Newark, CA 94560
United States

Customer Service:

customerservice@vectorlabs.com

Technical Service:

technical@vectorlabs.com

Tel: +1 (800) 227-6666

www.everestbiotech.com

**Research Use Only. Not for
diagnostic or therapeutic use.**

EB10917 - Goat Anti-APOL1 (aa297-309) Antibody

Size: 100µg specific antibody in 200µl



Target Protein

Principal Names: APOL1, apolipoprotein L, 1, APO-L, APOL, APOL-I, OTTHUMP00000197984, OTTHUMP00000197985, OTTHUMP00000197986, OTTHUMP00000197987, apolipoprotein L-I, apolipoprotein L1

Official Symbol: APOL1

Accession Number(s): NP_003652.2; NP_663318.1; NP_001130013.1

Human GeneID(s): [8542](#)

Important Comments: This antibody is expected to recognize all three reported isoforms (NP_003652.2; NP_663318.1; NP_001130013.1). Reported variants represent identical protein: NP_003652.2, NP_001130012.1

Immunogen

Peptide with sequence C-PHASASRPRVTEP, from the internal region of the protein sequence according to NP_003652.2; NP_663318.1; NP_001130013.1.

Please note the [peptide](#) is available for sale.

Purification and Storage

Purified from goat serum by ammonium sulphate precipitation followed by antigen affinity chromatography using the immunizing peptide.

Supplied at 0.5 mg/ml in Tris saline, 0.02% sodium azide, pH7.3 with 0.5% bovine serum albumin.

Aliquot and store at -20°C. Minimize freezing and thawing.

Applications Tested

Peptide ELISA: antibody detection limit dilution 1:16000.

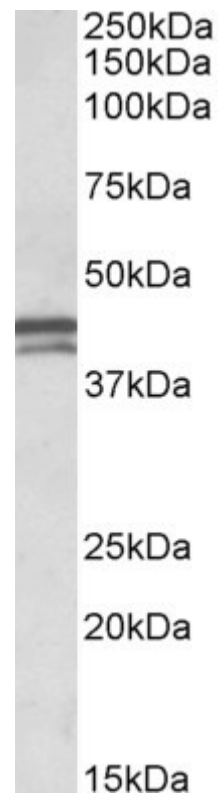
Western blot: Approx 42+45kDa bands observed in Human Placenta lysates (calculated MW of 45.9kDa and 42.2kDa according to NP_663318.1 and NP_001130013.1 resp.).

Recommended concentration: 0.1-0.3µg/ml.

Species Reactivity

Tested: Human

Expected from sequence similarity: Human



EB10917 (0.1µg/ml) staining of Human Placenta lysate (35µg protein in RIPA buffer). Primary incubation was 1 hour. Detected by chemiluminescence.