



UK Office

Everest Biotech Ltd

Cherwell Innovation Centre
77 Heyford Park
Upper Heyford
Oxfordshire
OX25 5HD
UK

Enquiries:

info@everestbiotech.com

Sales:

sales@everestbiotech.com

Tech support:

support@everestbiotech.com

Tel: +44 (0)1869 238326

www.everestbiotech.com

**Research Use Only. Not for
diagnostic or therapeutic use.**

EB07372 - Goat Anti-Apolipoprotein E receptor 2 Antibody

Size: 100µg specific antibody in 200µl



Target Protein

Principal Names: apolipoprotein E receptor 2, LRP8, low density lipoprotein receptor-related protein 8, apolipoprotein e receptor, APOER2, HSZ75190, low density lipoprotein receptor-related protein 8

Official Symbol: LRP8

Accession Number(s): NP_004622.2; NP_150643.2; NP_059992.3; NP_001018064.1

Human GeneID(s): [7804](#)

Non-Human GeneID(s): 16975 (mouse), 362558 (rat)

Important Comments: This antibody is expected to recognise all reported isoforms (NP_004622.2, NP_150643.2, NP_059992.3 and NP_001018064.1).

Immunogen

Peptide with sequence C-RNWKRKNTKSMNFD, from the internal region of the protein sequence according to NP_004622.2; NP_150643.2; NP_059992.3; NP_001018064.1.

Please note the [peptide](#) is available for sale.

Purification and Storage

Purified from goat serum by ammonium sulphate precipitation followed by antigen affinity chromatography using the immunizing peptide.

Supplied at 0.5 mg/ml in Tris saline, 0.02% sodium azide, pH7.3 with 0.5% bovine serum albumin.

Aliquot and store at -20°C. Minimize freezing and thawing.

Applications Tested

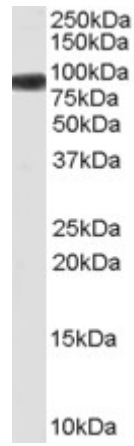
Peptide ELISA: antibody detection limit dilution 1:32000.

Western blot: Approx 90kDa band observed in Mouse Brain lysates (calculated MW of 96.2kDa according to NP_001074395.1 (mouse). Recommended concentration: 0.3-1µg/ml.

Species Reactivity

Tested: Mouse

Expected from sequence similarity: Human, Mouse, Dog



EB07372 (0.3 μ g/ml) staining of Mouse Brain lysate (35 μ g protein in RIPA buffer). Primary incubation was 1 hour.
Detected by chemiluminescence.