

## International Office

### Everest Biotech Ltd

Vector Laboratories, Inc.  
6737 Mowry Ave  
Newark, CA 94560  
United States

Customer Service:

[customerservice@vectorlabs.com](mailto:customerservice@vectorlabs.com)

Technical Service:

[technical@vectorlabs.com](mailto:technical@vectorlabs.com)

Tel: +1 (800) 227-6666

[www.everestbiotech.com](http://www.everestbiotech.com)

**Research Use Only. Not for  
diagnostic or therapeutic use.**

## EB08762 - Goat Anti-APOH Antibody

Size: 100µg specific antibody in 200µl



### Target Protein

**Principal Names:** APOH, apolipoprotein H (beta-2-glycoprotein I), B2G1, BG, apolipoprotein H, beta-2-glycoprotein I

**Official Symbol:** APOH

**Accession Number(s):** NP\_000033.2

**Human GeneID(s):** [350](#)

### Immunogen

Peptide with sequence C-QGERVKIQEKFKN, from the internal region of the protein sequence according to NP\_000033.2.

Please note the [peptide](#) is available for sale.

### Purification and Storage

Purified from goat serum by ammonium sulphate precipitation followed by antigen affinity chromatography using the immunizing peptide.

Supplied at 0.5 mg/ml in Tris saline, 0.02% sodium azide, pH7.3 with 0.5% bovine serum albumin.

Aliquot and store at -20°C. Minimize freezing and thawing.

### Applications Tested

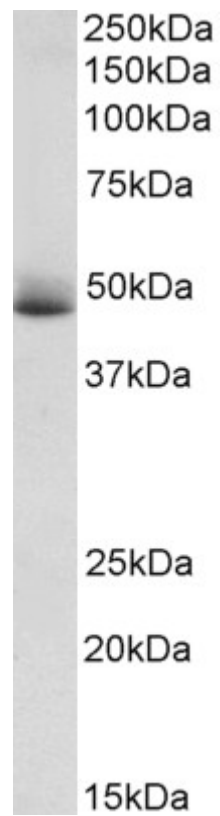
**Peptide ELISA:** antibody detection limit dilution 1:128000.

**Western blot:** Approx 48kDa band observed in Human Albumin-depleted Plasma lysates (calculated MW of 38.3kDa according to NP\_000033.2). The observed molecular weight corresponds to earlier findings in literature with different antibodies (Gambino, J Lipid Res. 1996 Apr;37(4):902-4. PMID: 8732790). Recommended concentration: 1-3µg/ml.

### Species Reactivity

**Tested:** Human

**Expected from sequence similarity:** Human, Dog



EB08762 (1 $\mu$ g/ml) staining of Human Albumin-depleted Plasma lysate (35 $\mu$ g protein in RIPA buffer). Primary incubation was 1 hour. Detected by chemiluminescence.