



UK Office

Everest Biotech Ltd

Cherwell Innovation Centre
77 Heyford Park
Upper Heyford
Oxfordshire
OX25 5HD
UK

Enquiries:

info@everestbiotech.com

Sales:

sales@everestbiotech.com

Tech support:

support@everestbiotech.com

Tel: +44 (0)1869 238326

Fax: +44 (0)1869 238327

US Office

Everest Biotech c/o Abcore

405 Maple Street, Suite A106
Ramona,
CA 92065
USA

Inquiries:

info@everestbiotech.com

Sales:

usasales@everestbiotech.com

Tech support:

support@everestbiotech.com

Tel: 888-320-4628 (toll-free)

Fax: 888-841-9041

www.everestbiotech.com

**Research Use Only. Not for
diagnostic or therapeutic use.**

EB08768 - Goat Anti-APOL4 (C Terminus) Antibody

Size: 100µg specific antibody in 200µl



Target Protein

Principal Names: apolipoprotein L4, APOL4, apolipoprotein L, 4, APOL-IV, APOLIV, OTTHUMP00000028937, apolipoprotein L-IV

Official Symbol: APOL4

Accession Number(s): NP_085146.2; NP_663693.1

Human GeneID(s): [80832](#)

Important Comments: This antibody is expected to recognize both reported isoforms (NP_085146.2 and NP_663693.1).

Immunogen

Peptide with sequence C-ENLNELTHIHQSLK, from the C Terminus of the protein sequence according to NP_085146.2; NP_663693.1.

Please note the [peptide](#) is available for sale.

Purification and Storage

Purified from goat serum by ammonium sulphate precipitation followed by antigen affinity chromatography using the immunizing peptide.

Supplied at 0.5 mg/ml in Tris saline, 0.02% sodium azide, pH7.3 with 0.5% bovine serum albumin.

Aliquot and store at -20°C. Minimize freezing and thawing.

Applications Tested

Peptide ELISA: antibody detection limit dilution 1:32000.

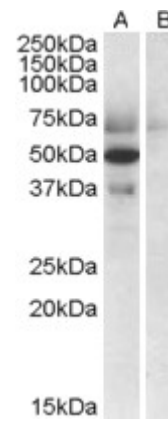
Western blot: Approx. 37kDa band observed in Human Placenta lysates (calculated MW of 38.7kDa according to NP_085146.2). Recommended concentration: 0.3-1µg/ml. Primary incubation was 1 hour. Two additional bands of unknown identity were also consistently observed at 50kDa and at 70kDa. The band at 50kDa was successfully blocked by incubation with the immunising peptide. The other band at 70kDa however was not blocked by the immunizing peptide and it is therefore a non-specific signal.

IHC: Paraffin embedded Human Skeletal Muscle. Recommended concentration: 5µg/ml.

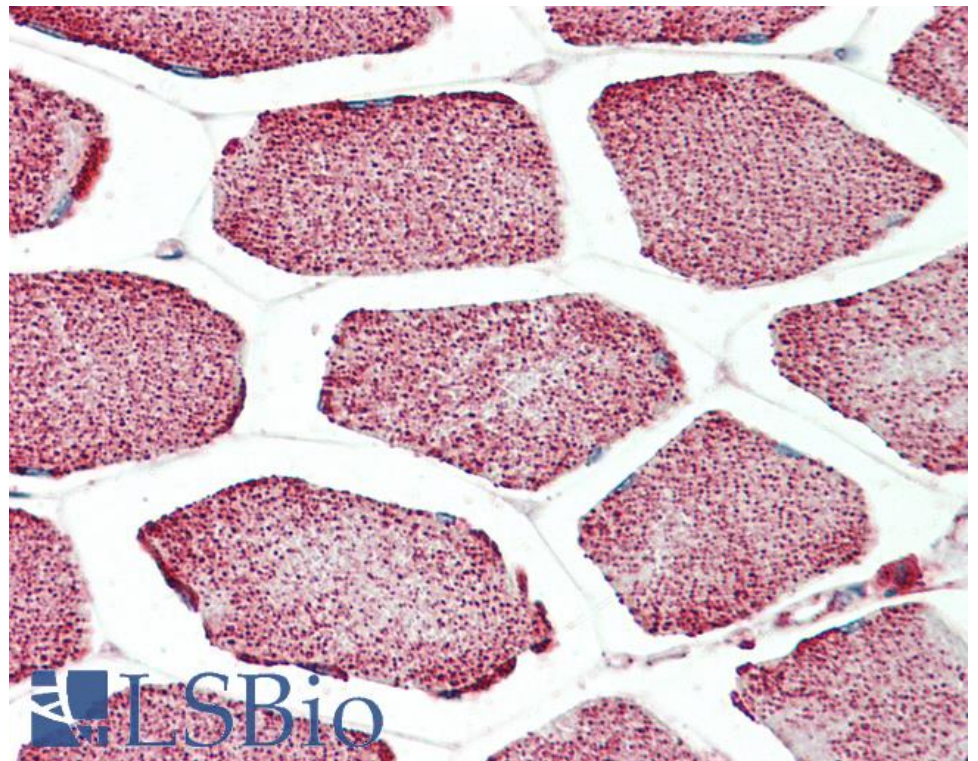
Species Reactivity

Tested: Human

Expected from sequence similarity: Human



EB08768 (0.5µg/ml) staining of Human Placenta lysate (35µg protein in RIPA buffer) with (B) and without (A) blocking with the immunising peptide. Detected by chemiluminescence.



EB08768 (5µg/ml) staining of paraffin embedded Human Skeletal Muscle. Steamed antigen retrieval with citrate buffer pH 6, AP-staining.