



UK Office

Everest Biotech Ltd

Cherwell Innovation Centre
77 Heyford Park
Upper Heyford
Oxfordshire
OX25 5HD
UK

Enquiries:

info@everestbiotech.com

Sales:

sales@everestbiotech.com

Tech support:

support@everestbiotech.com

Tel: +44 (0)1869 238326

Fax: +44 (0)1869 238327

US Office

Everest Biotech c/o Abcore

405 Maple Street, Suite A106
Ramona,
CA 92065
USA

Inquiries:

info@everestbiotech.com

Sales:

usasales@everestbiotech.com

Tech support:

support@everestbiotech.com

Tel: 888-320-4628 (toll-free)

Fax: 888-841-9041

www.everestbiotech.com

**Research Use Only. Not for
diagnostic or therapeutic use.**

EB08771 - Goat Anti-apolipoprotein L6 (mouse) Antibody

Size: 100µg specific antibody in 200µl



Target Protein

Principal Names: Apol6, apolipoprotein L, 6, APOL-VI, apolipoprotein L-VI, apolipoprotein L6, 2310076O14Rik

Official Symbol: Apol6

Accession Number(s): NP_082286.1;

Non-Human GeneID(s): 71939 (mouse)

Immunogen

Peptide with sequence C-KDLKAANPTLAE, from the internal region of the protein sequence according to NP_082286.1;

Please note the [peptide](#) is available for sale.

Purification and Storage

Purified from goat serum by ammonium sulphate precipitation followed by antigen affinity chromatography using the immunizing peptide.

Supplied at 0.5 mg/ml in Tris saline, 0.02% sodium azide, pH7.3 with 0.5% bovine serum albumin.

Aliquot and store at -20°C. Minimize freezing and thawing.

Applications Tested

Peptide ELISA: antibody detection limit dilution 1:4000.

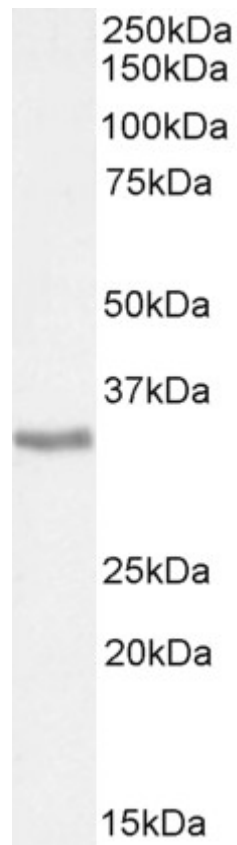
Western blot: Approx. 35kDa band observed in Mouse Testis lysates (calculated MW of 35.1kDa according to NP_082286.1). Recommended concentration: 3µg/ml. Primary incubation 1 hour at room temperature.

Immunofluorescence: A customer reported weak staining on NIH3T3 cells at a concentration of 10ug/ml. **Flow Cytometry:** A customer reported weak staining on NIH3T3 cells at a concentration of 10ug/ml.

Species Reactivity

Tested: Mouse

Expected from sequence similarity: Mouse



EB08771 (3 μ g/ml) staining of Mouse Testes lysate (35 μ g protein in RIPA buffer). Detected by chemiluminescence.