



UK Office

Everest Biotech Ltd

Cherwell Innovation Centre
77 Heyford Park
Upper Heyford
Oxfordshire
OX25 5HD
UK

Enquiries:

info@everestbiotech.com

Sales:

sales@everestbiotech.com

Tech support:

support@everestbiotech.com

Tel: +44 (0)1869 238326

www.everestbiotech.com

**Research Use Only. Not for
diagnostic or therapeutic use.**

EB06188 - Goat Anti-APXL Antibody

Size: 100µg specific antibody in 200µl



Target Protein

Principal Names: SHROOM2, APXL, HSAPXL, apical protein-like (Xenopus laevis), APX homolog of Xenopus, shroom family member 2, DKFZp781J074, FLJ39277, apical protein of Xenopus-like, apical protein, Xenopus laevis-like

Official Symbol: SHROOM2

Accession Number(s): NP_001640

Human GeneID(s): [357](#)

Immunogen

Peptide with sequence KCLLDLQPERGK, from the C Terminus of the protein sequence according to NP_001640.

Please note the [peptide](#) is available for sale.

Purification and Storage

Purified from goat serum by ammonium sulphate precipitation followed by antigen affinity chromatography using the immunizing peptide.

Supplied at 0.5 mg/ml in Tris saline, 0.02% sodium azide, pH7.3 with 0.5% bovine serum albumin.

Aliquot and store at -20°C. Minimize freezing and thawing.

Applications Tested

Peptide ELISA: antibody detection limit dilution 1:32000.

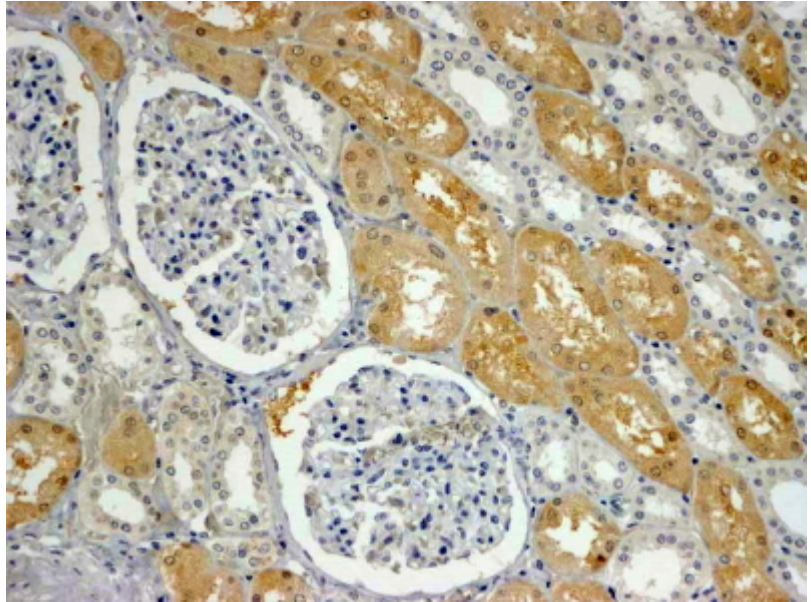
IHC: In paraffin embedded Human Kidney shows cytoplasm staining in PCT exclusively.

Recommended concentration, 4-6µg/ml.

Species Reactivity

Tested: Human

Expected from sequence similarity: Human, Cow



EB06188 (4 μ g/ml) staining of paraffin embedded Human Kidney. Steamed antigen retrieval with Tris/EDTA buffer pH 9, HRP-staining.